

New pedestrian and cycle way to open by end of August

Much improved links into Oxford city centre for everyone on bike or foot



In a little over a month, we'll be opening the first of two new pedestrian and cycle way routes from west Oxfordshire into the city centre. The route along the northern (station) side of the road will be the first to open, by the end of August 2025.

This four-metre-wide route under the railway will offer a significant improvement over the existing tunnel with more space, being nearly three times as wide. Additionally, the new route will segregate people and bikes, and be elevated from the road to make it safer for all.

When Botley Road reopens by the end of August 2026, there will be an additional four-metre-wide pedestrian and cycle way under the southern (car park) side of the road under the railway; massively increasing capacity compared to before the project.

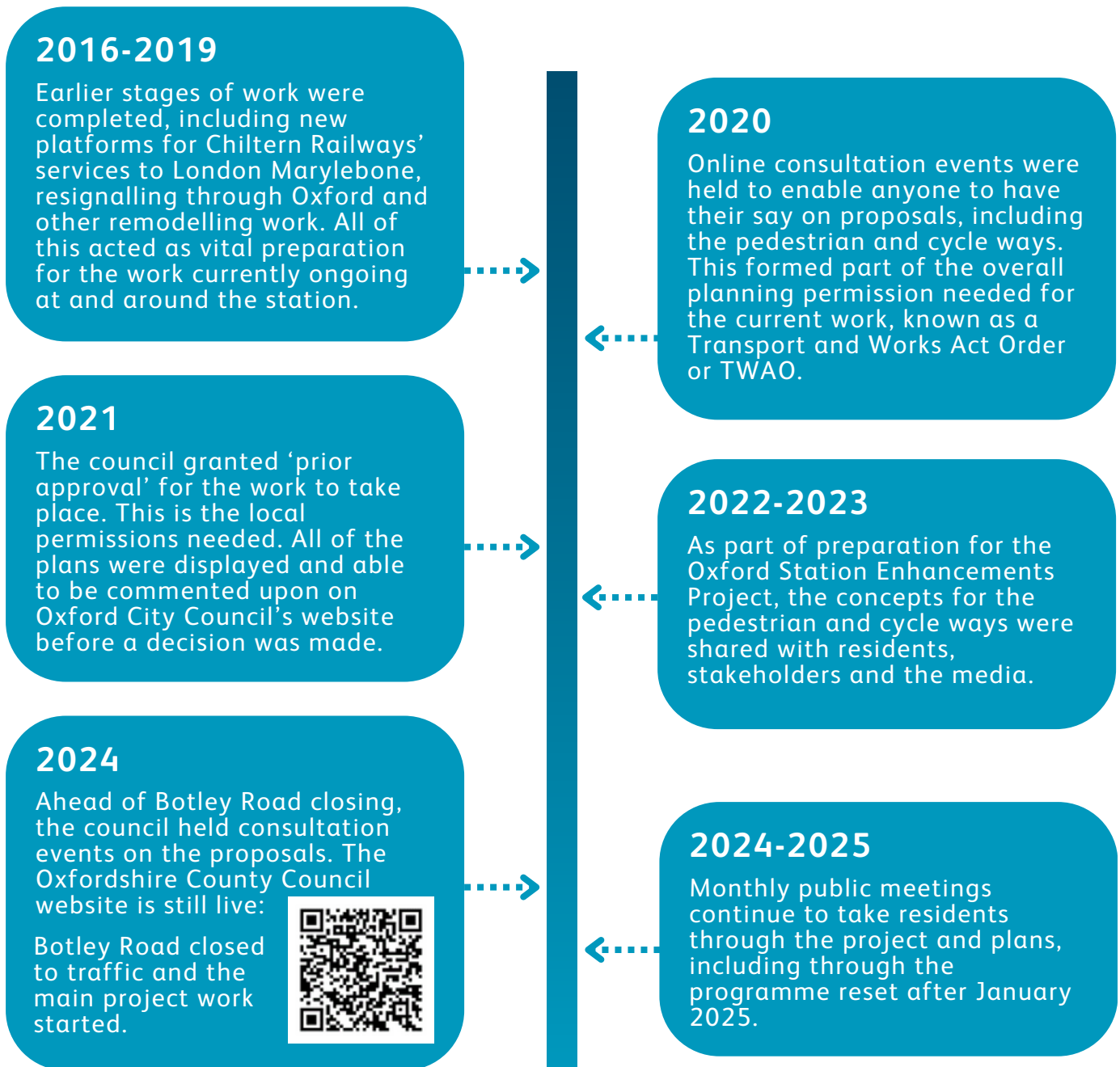


After the project completes, the council will adopt the road and be responsible for its maintenance and safety.

Until August 2026 there will continue to be hoardings in and around the worksite and the route that pedestrians and cyclists follow will be altered. Continue to follow progress through Facebook, digital screens on site, the weekly newsletter and the monthly meetings.

The path to improving links


Mapping out the timeline and engagement



The plans for improving Oxford station, as well as pedestrian and cycle routes into the city have been long in the planning, followed all due processes and engaged & consulted local residents throughout - either directly via Network Rail or through either of the local councils. Due to the challenges on site it has not been a smooth journey, taking longer than anyone would wish, but the first big improvement is now just around the corner. Thank you for your support and patience.

Get in touch...

You can continue to get in touch with us using the details below, or coming along to one of our monthly meetings, which are published in advance.

 **03457 11 41 41** for our 24 hour national helpline

 **OxfordFeedback@networkrail.co.uk**