

# Marchwood Station and Marchwood Level Crossing

## What are the benefits of the Waterside Line project?

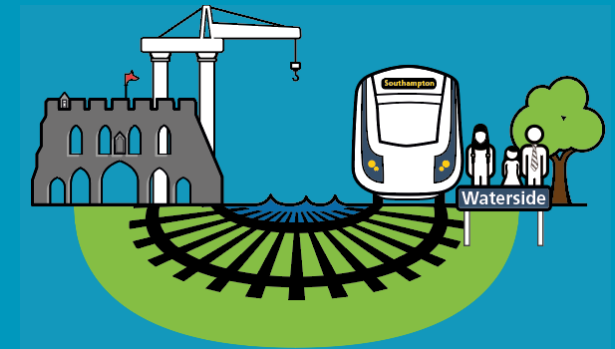
The proposals we are developing would see passenger services restored from Southampton Central to Marchwood station and a brand-new station in Hythe.

## Background

Marchwood station closed to passengers, when passenger services ceased running in the 1960s. The station building is still used to signal freight services to and from the port at Marchwood and to operate the level crossing.

## Our proposals for Marchwood Station

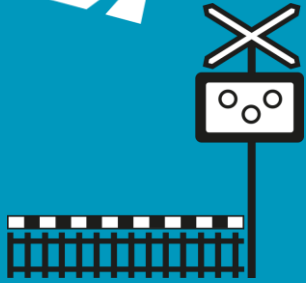
- Re-open the existing station platform and potentially add a second platform
- Provide new station facilities including ticket machines and passenger information screens
- Provide a new car, walking and cycle route to the station forecourt and an accessible access route to the station platform



Marchwood Station - Layout



Marchwood Station - Sketch



## Our proposals for Marchwood Level Crossing

- Upgrade the crossing to a modern full barrier level crossing
- Provide new lighting and signage at the crossing

To find out more

Visit [www.networkrail.co.uk/watersideline](http://www.networkrail.co.uk/watersideline) where you can download a range of factsheets, maps and other information about the scheme

Come along to one of our drop in events where you will have the opportunity to view our proposals and speak to members of the Waterside Line team. Please visit [www.networkrail.co.uk/watersideline](http://www.networkrail.co.uk/watersideline) for details about the events in your area.

Contact us

- Email : [watersideline@networkrail.co.uk](mailto:watersideline@networkrail.co.uk)
- Helpline: 0345 711 4141
- Post: Waterside Line Project Team, Puddle Dock, Blackfriars, London, EC4V 3DS
- Website: [www.networkrail.co.uk/watersideline](http://www.networkrail.co.uk/watersideline)

