

OFFICIAL



# Midland Main Line Programme June 2022



# Agenda

- Introduction
- Locations
- Compound installation
- Vegetation Management
- Ecology
- Piling and Methodology Explained
- Piling Video
- Overhead Line Equipment
- Schedule
- Questions



# Location

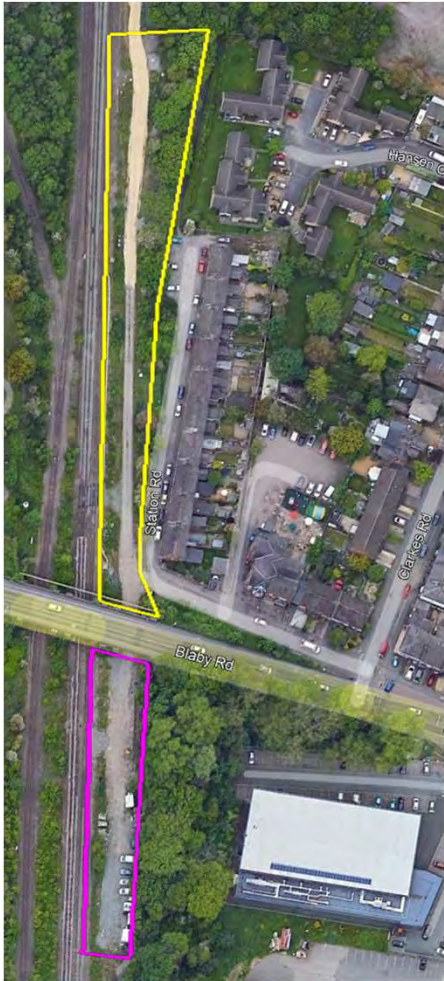
OFFICIAL



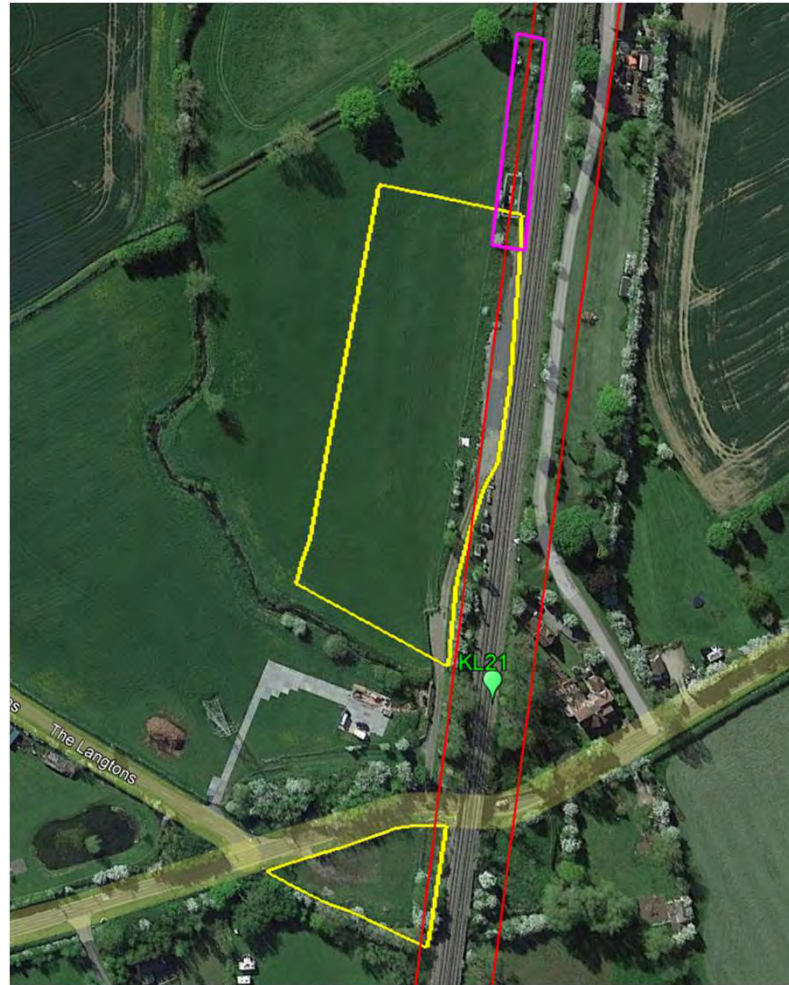


# Compounds and Substations

OFFICIAL



South Wigston



East Langton



Wistow road





# Compounds

- Access and welfare
- Solar powered eco cabins
- Deliveries
- Acoustic barriers
- Traffic
- Maintenance



Solar task lights



Solar-tainer



Eco Cabins



# Vegetation Management

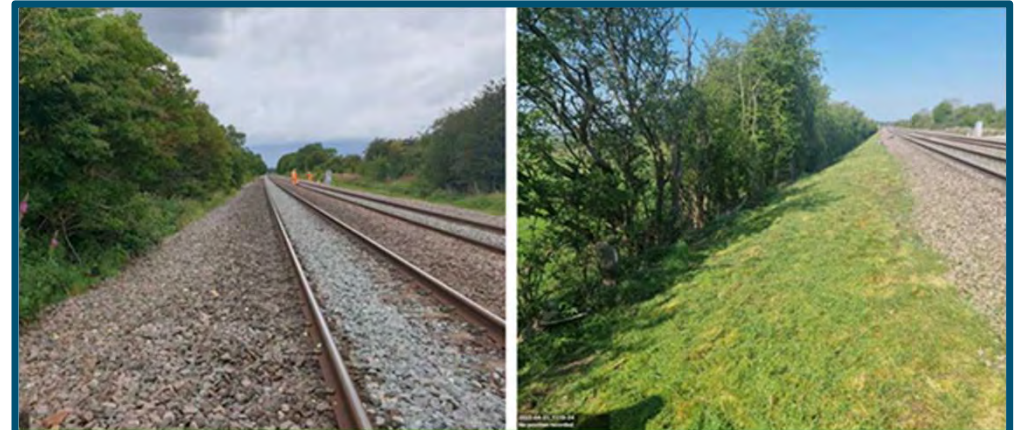
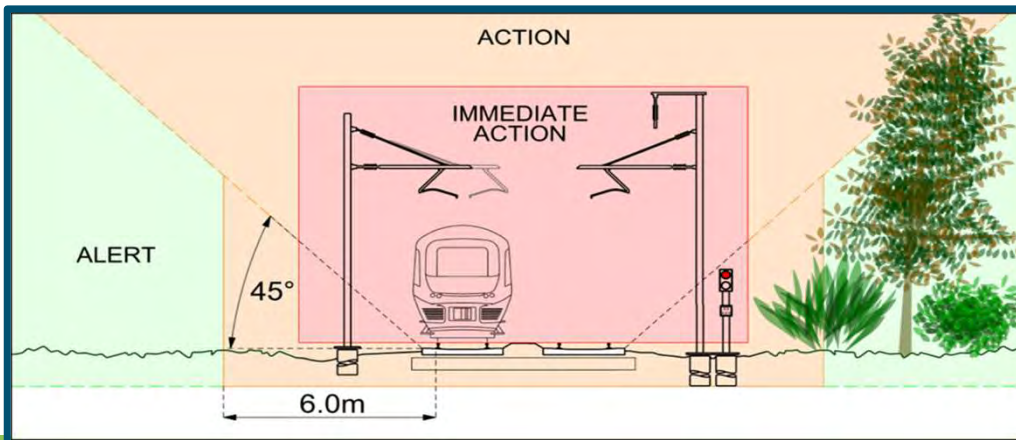
## Why we need to remove vegetation

- Safety
- Invasive species
- Diseased vegetation

## Sustainable Land Use Plan

Over 200 bird and bug boxes donated to local councils and nature groups

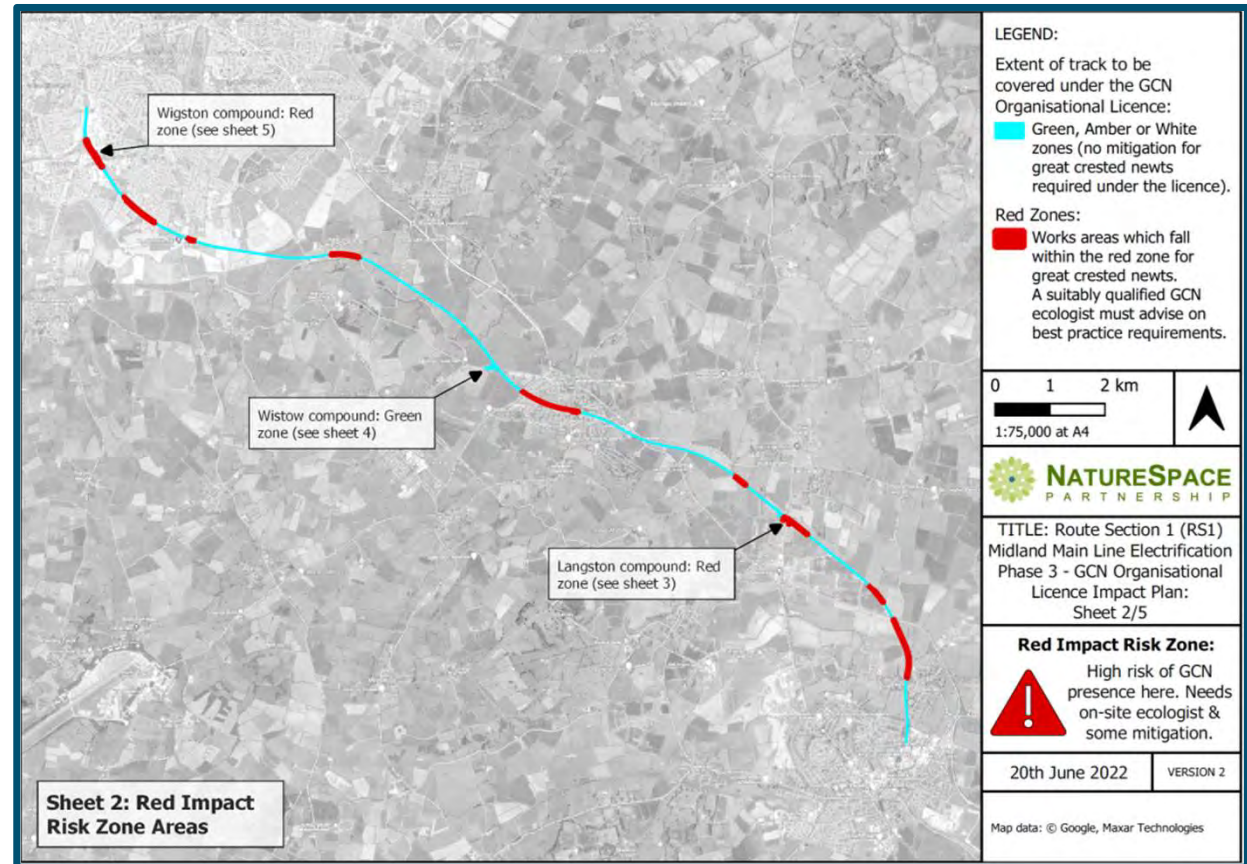
Bird nesting season





# Managing Ecological Risk

- Risks identified
- Protecting the environment
- Maintaining a Green Corridor
- Improving lineside biodiversity





# Piling

What is piling?

Vibratory installation

Percussive installation

20 - 40 minutes per pile

+ - 50 meters apart



OFFICIAL

**NetworkRail**





# Overhead Line Equipment

Some images of the types of OLE that will be installed along the track



# Programme

We have tried to plan this work to take place during daytime hours wherever possible, however, due to operational safety considerations, there are circumstances that require access to track while trains are not running this also allows our works to continue without interruptions to daytime commuting.

Due to programme constraints and safety concerns, we will be undertaking a large proportion of the work at night between these dates.

Our teams have been briefed accordingly to try their absolute best to consider the wellbeing of our lineside neighbours. The nature of our work unfortunately can cause disturbance from time to time and these dates are subject to change.

Work activity	Start date	Estimated end date
Ground Trial Holes	15 July 2022	29 October 2022
Compound and Road Rail Access Point install	15 July 2022	27 October 2022
Vegetation Management	15 July 2022	6 June 2023
Piling	October 2022	August 2023
Steel Installation	November 2022	September 2023
Wiring	January 2023	December 2023
Adjustments and assurance	February 2023	January 2024



OFFICIAL



# Frequently Asked Questions



[www.networkrail.co.uk/mml](http://www.networkrail.co.uk/mml)

Thank you for joining us this evening, and for your patience while we carry out this work.

We realise that working at night can cause disruption and sincerely apologise for this.

We will continue to notify you of when we are working at night, but please be aware this can be subject to change, due to weather, track or ground conditions, or access issues should there be an unforeseen emergency.

For more general information about this programme, or for any other related questions or comments, please contact our 24 hr Helpline on 03457 11 4141 or visit our website [www.networkrail.co.uk/livingbytherailway](http://www.networkrail.co.uk/livingbytherailway)

