

Bristol railway work update

June 2021

Get ready for Bristol's summer track upgrade

Two weeks to go until major engineering works next to Bristol Temple Meads

From 10 July - 3 September we're upgrading a huge junction next to Bristol Temple Meads station, replacing track in a clever new layout for better journeys.

Much of the existing track and equipment dates back to the 1960s so, once complete, our eight-week upgrade will mean less delays with fewer faults. Improving the junction will also remove a bottleneck, increasing capacity and making it easier for trains to get in and out of Bristol Temple Meads. With an extra line included in our new layout, the upgrade is also paving the way for new suburban services for the future.

St Phillips will see the bulk of the work and in support, we are setting up a small worksite and access point at Dings Park, with a minibus pickup/drop off point for our workers.

Bedminster station will play an important role throughout the junction upgrade, with

disused sections of platform temporarily brought back into use for GWR trains. From Tuesday 31 August until Friday 3 September, trains from Taunton will terminate at Bedminster station, with passengers picking up onward transfers by rail replacement buses from a car park in Dalby Avenue.

Brislington and St Anne's

We have set up a temporary depot behind a business park on Whitby Road/Eldon Way which will service CrossCountry trains overnight over two periods during the eight-week upgrade.

Additional work on the Bristol Temple Meads roof and eastern entrance projects will take place while train services are disrupted due to our track upgrades, making the most of the opportunity. This includes creating foundations the new eastern entrance as well as for scaffolding for our roof project. We will also be working on platform and forecourt canopies.



Overview

Over the next few years we have a huge programme of work in the Bristol area - this newsletter aims to keep you updated.

Retailers open for business at Bristol Temple Meads

Following the easing of lockdown restrictions in May, the station team and retailers look forward to welcoming passengers and customers back at Bristol Temple Meads

WHSmith, Lily May, Starbucks, Upper Crust and The Pasty Shop are now all open for business.

Get in touch

If you have any questions about our work, contact us: bristolrailregen@networkrail.co.uk or call our 24-hour helpline 03457 11 41 41

For more information:

networkrail.co.uk/bristolrailregen
@NetworkRailWest #BristolRailRegen

If you no longer need these updates please email us and ask to opt out.



REMINDER REMINDER REMINDER REMINDER

Check your journey

Track upgrades
10 July - 3 September

This summer we're replacing a major junction near Bristol Temple Meads.

nationalrail.co.uk or GWR.com/Bristol #BristolRailRegen



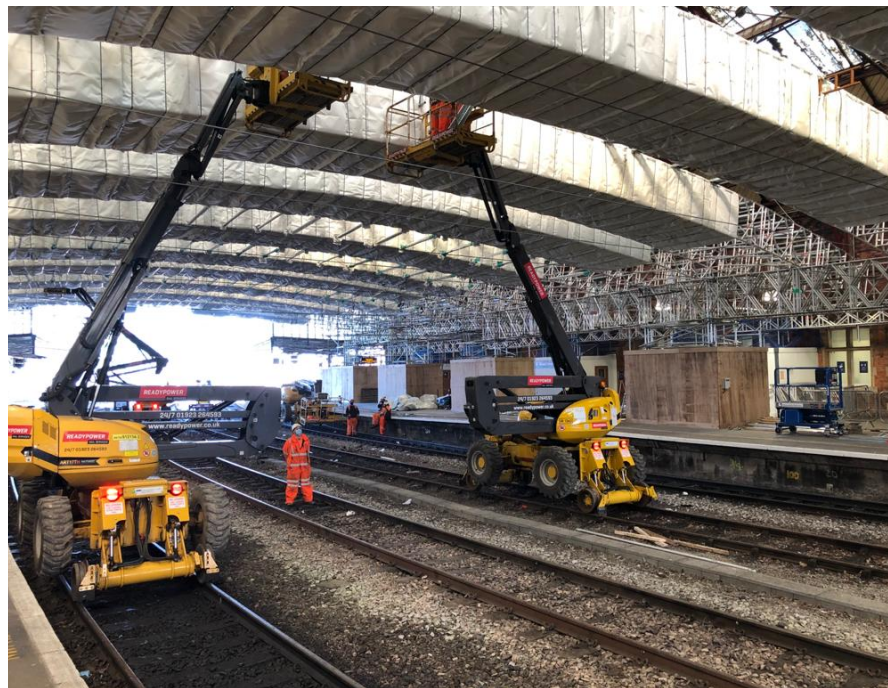
Greener and brighter Bristol Temple Meads station

Roof restoration

Over the next couple of years, specialist teams are repairing, painting, and re-glazing the iconic Victorian main train shed roof at Bristol Temple Meads, as well as the canopies on the platforms and within the station forecourt.

Throughout March we worked day and night for three weeks on platforms three to six, to successfully install 50 scaffolding towers and 15 huge, 36m roof beams, spanning the width of the train shed.

These will support a large safety screen, giving workers access to the roof while protecting passengers and staff below. This means the station can remain open and operational throughout the work.



Brand new WiFi launched at Bristol Temple Meads

Passengers can now stay better connected following the rollout of fast, free and reliable WiFi at Bristol Temple Meads station in April.

The new WiFi network offers passengers unlimited web browsing, seamless connectivity and a single sign-on feature across Network Rail managed stations.

Modernising the electrical system

In March, we awarded the £10.2m contract for the full rewire of Bristol Temple Meads station. SSE Enterprise are using local labour, supply chains and businesses as part of their work which is fantastic news for the Bristol economy.

As well as rewiring the station to bring the electrical system up to modern standards, work will also involve renewing the heating, cooling and ventilation systems, and upgrading the lighting to energy efficient LEDs, making the station a brighter and greener environment.

The rewire and the roof restoration are due for completion in 2023.

Travel advice

Saturday 10 July to Friday 6 August

No trains between Bristol Temple Meads and Lawrence Hill or Stapleton Road.

Trains between Filton Abbey Wood and Bath Spa won't call at Bristol Temple Meads.

Buses replace trains between Bristol Temple Meads, Lawrence Hill, Stapleton Road and Filton Abbey Wood.

Buses also replace trains between Bristol Temple Meads and Severn Beach on Sundays.

Saturday 7 August

No trains between Bristol Temple Meads and Bristol Parkway or Bath Spa.

Trains between Filton Abbey Wood and Bath Spa won't call at Bristol Temple Meads.

Buses replace trains between Bristol Temple Meads and Bristol Parkway, Bath Spa or Taunton.

Sunday 8 August

No trains via Bristol Temple Meads

Buses replace trains between Bristol Temple Meads and Bristol Parkway, Bath Spa, Taunton, Weston-super-Mare or Severn Beach.

Monday 9 to Friday 13 August

No trains between Bristol Temple Meads and Bristol Parkway or Bath Spa.

Trains between Filton Abbey Wood and Bath Spa or Weston-super-Mare won't call at Bristol Temple Meads.

Buses replace trains between Bristol Temple Meads and Bristol Parkway, Bath Spa or Taunton.

Saturday 14 to Monday 30 August

No trains between Bristol Temple Meads and Bath Spa.

Trains between Filton Abbey Wood and Bath Spa won't call at Bristol Temple Meads.

Buses replace trains between Bristol Temple Meads and Bath Spa.

Tuesday 31 August to Friday 3 September

No trains via Bristol Temple Meads.

Trains between Filton Abbey Wood and Bath Spa or Weston-super-Mare won't call at Bristol Temple Meads.

Buses replace trains between Bristol Temple Meads and Bristol Parkway, Bath Spa, Taunton, Bedminster or Severn Beach.

Check before you travel this summer

www.nationalrail.co.uk

www.GWR.com/Bristol

www.crosscountrytrains.co.uk/bristol