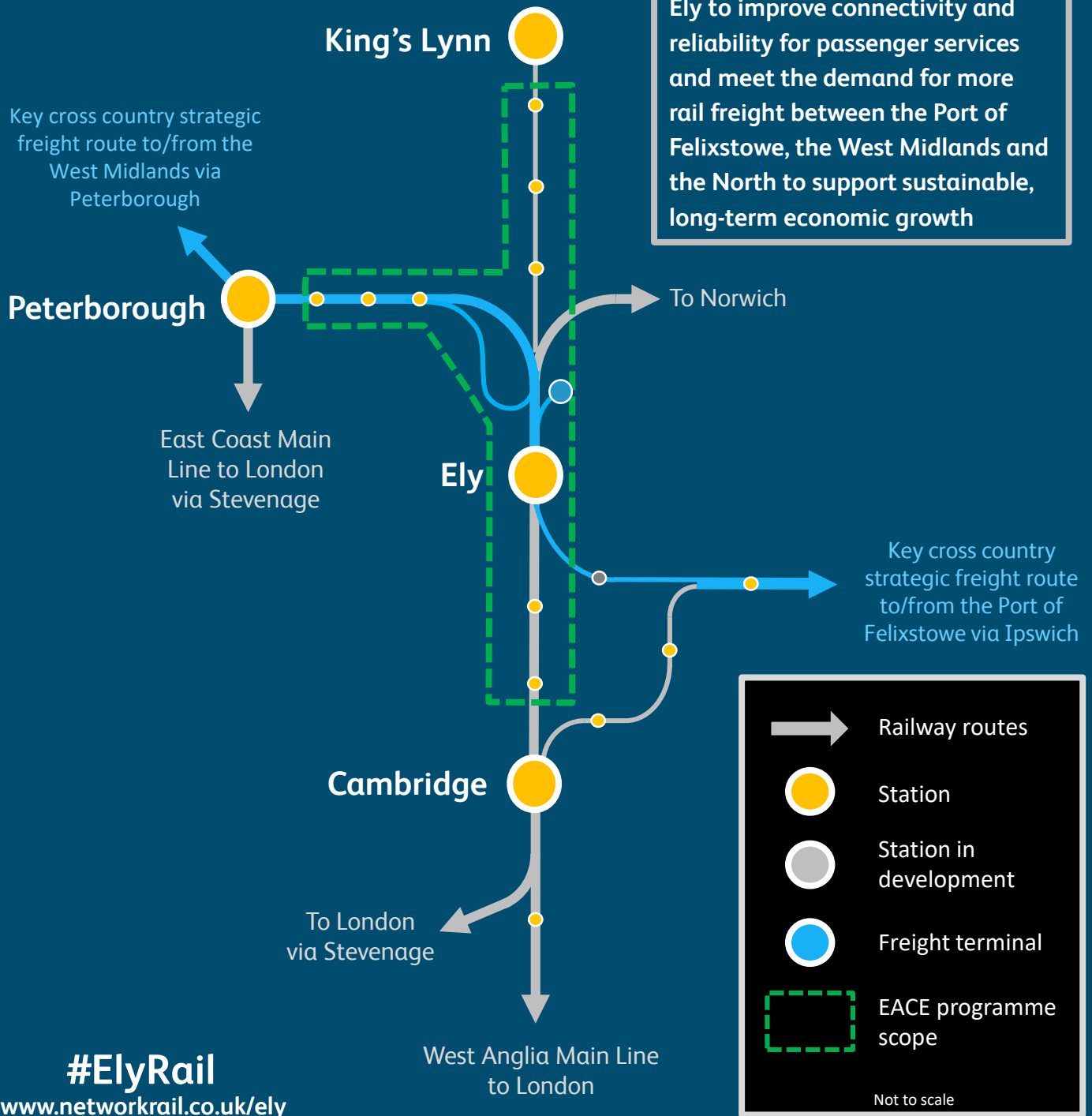


Ely area capacity enhancement programme (EACE)

Network Rail is developing proposals to upgrade the railway to allow more trains to run through Ely to improve connectivity and reliability for passenger services and meet the demand for more rail freight between the Port of Felixstowe, the West Midlands and the North to support sustainable, long-term economic growth



#ElyRail
www.networkrail.co.uk/ely

The development of the Ely Area Capacity Enhancement Programme is being funded by the UK Government, with contributions from Cambridgeshire County Council, the Cambridgeshire & Peterborough Combined Authority, New Anglia LEP and the Strategic Freight Network