

# Telecoms asset reuse

A brief overview



This document provides a brief summary of telecoms asset reuse. More technical guidance is provided as part of the process to reuse assets.

December 2020

## What is telecoms asset reuse?

We want passengers to have a strong mobile signal on trains and to connect communities all along the railway.

We want to help telecoms operators and internet service providers to provide a better service for mobile and broadband customers who are hard to reach.

So, we are working with the Department for Transport (DfT) to see if some of our railway telecoms equipment can be reused to give passengers a better signal, and to better connect railway neighbours and nearby communities.

We are making it easier for telecoms operators to reuse railway masts, fibre cables and communications cabinets and help provide better digital connectivity for everyone on and near the railway.

By reusing railway telecoms equipment already in place along the railway, we can help bring better connectivity to many more people and parts of the UK.



## Reusing safely

To make telecoms asset reuse work, we need to make sure telecoms operators understand the technical, safety and commercial impacts of sharing and reusing railway assets to improve digital connectivity in this way.

We also need to make sure the regulations that govern the railway in the UK can support this new approach without impacting the safe, secure and reliable operation of the railway.

## Which telecoms assets can be reused?

We've made a list of all the railway telecoms assets we could share with the telecoms industry.

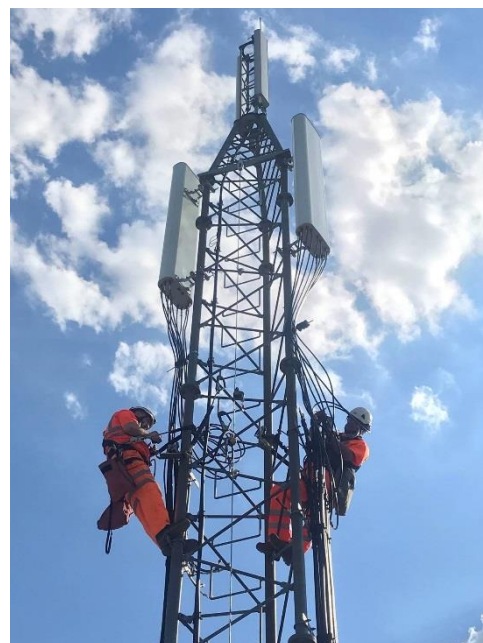
For example, for our masts - this includes information such as; the location, height, type, capacity and power capability.

And most importantly, if the mast can support telecoms operator antennas necessary to connect passengers and local communities.

## Following the correct procedures

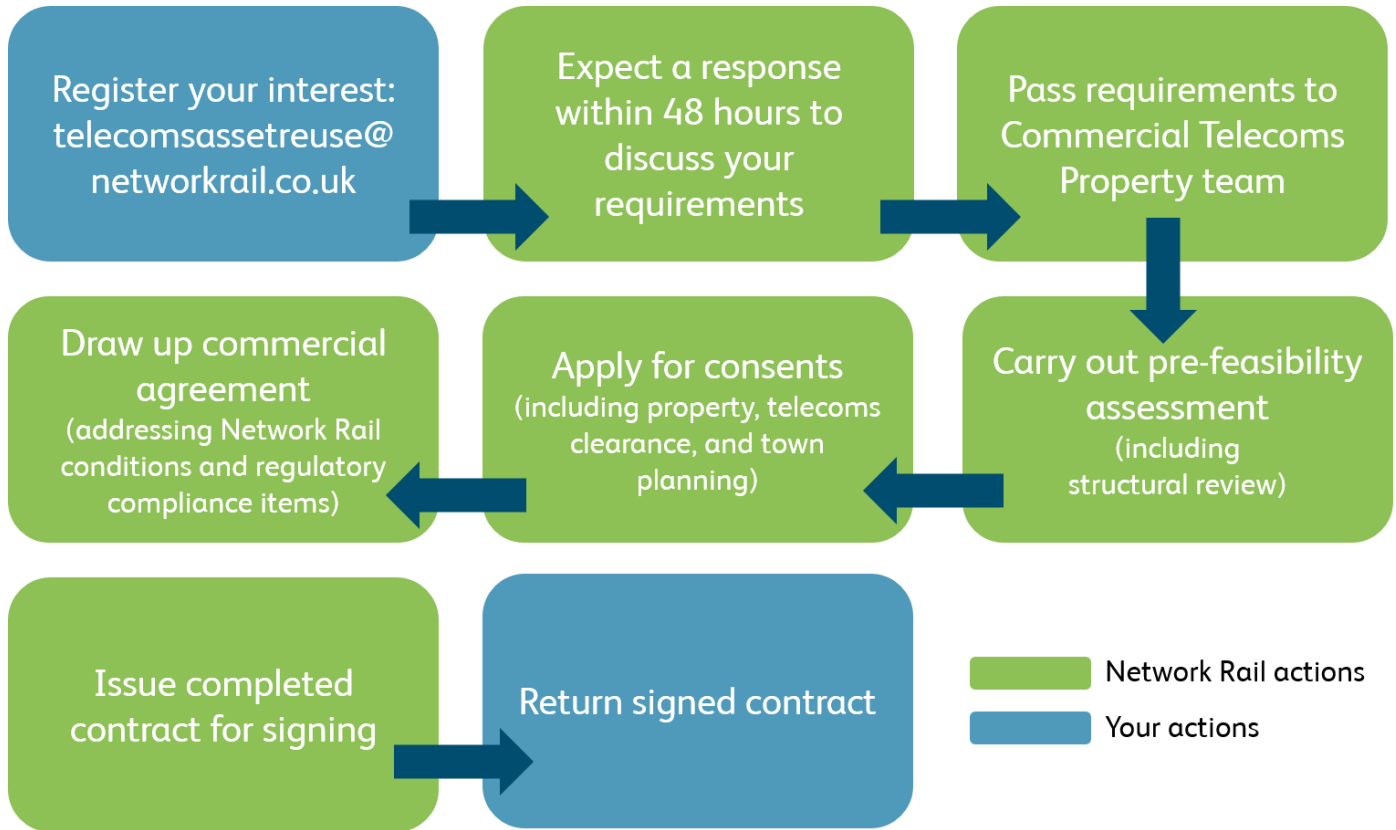
We've also collated all the information relating to the procedures, processes and approvals that telecoms operators and internet service providers will need if they want to reuse railway telecoms assets.

Much of this information is included in our technical guidance manual which will be shared as part of the process to reuse assets.

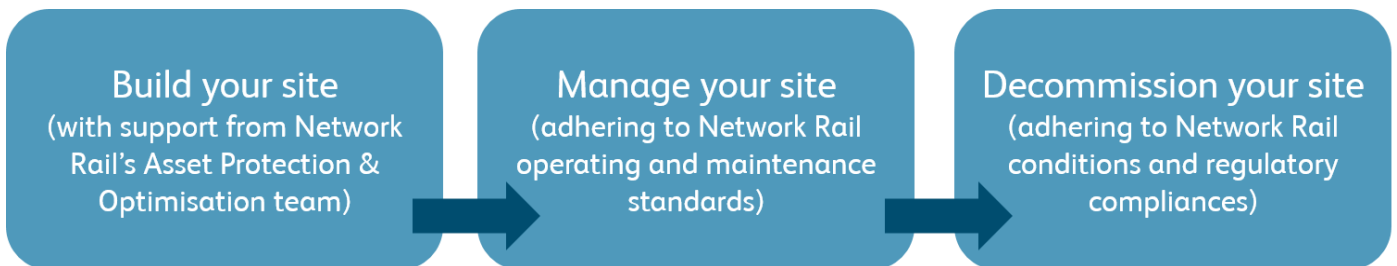


## What are the steps?

Here is an overview of the steps we'll go through with telecoms operators and internet service providers, before any construction works can take place.



These are the next steps which cover constructing, managing and decommissioning telecoms operator and internet service provider equipment reusing railway telecoms assets:



## More information

To register your interest to reuse telecoms railway assets, or to ask questions, please email: [telecomsassetreuse@networkrail.co.uk](mailto:telecomsassetreuse@networkrail.co.uk). We will respond to enquiries within 48 hours.

If you would like more detailed information on how to work on the railway, please download our '[investing in the railway](#)' document from our website.

**Network Rail Limited**

1 Eversholt Street  
London NW1 2DN

Tel **020 7557 8000**

[networkrail.co.uk](http://networkrail.co.uk)

Company number: 4402220  
Registered in England and Wales