



## Workshop Structure:

- 1 Overview
- 2 Design programme and work to date
3. Key physical constraints
4. Ongoing liaison with the local community
5. Public survey and your initial thoughts
6. Close

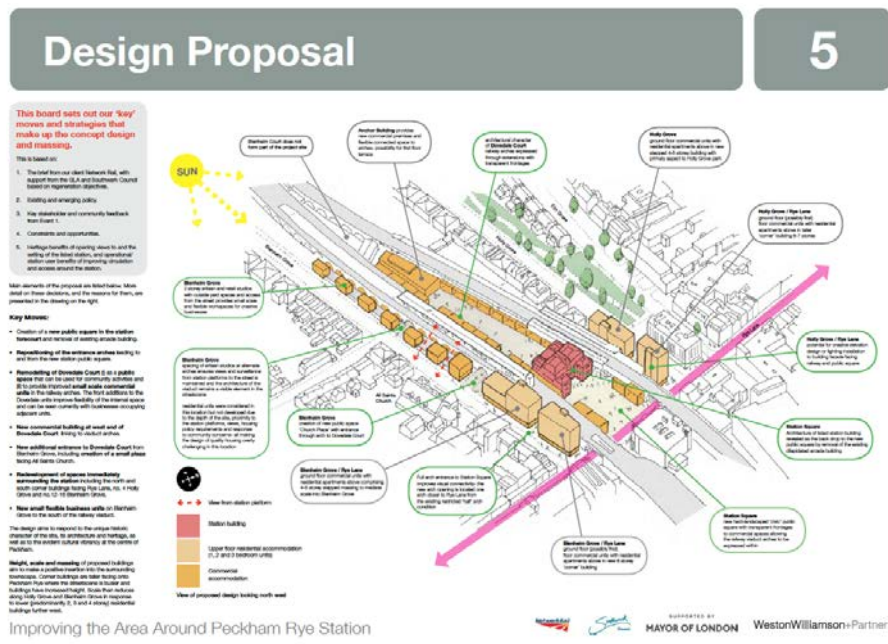
Recent history:



Plans drawn up by Weston Williamson and Partners for the £25m project have gone out to public consultation.

The station gateway project will also include developing space around the station area for commercial use and creating a new square in front of the Grade 2 listed building, which has been hidden for many years.

Arcade buildings around the station will be demolished to make way for two new buildings set above existing railway arches.



## New lifts at Peckham Rye Station delayed



NR Property development proposals dropped

AfA funding withdrawn

## Recent history:



## Peckham Rye Station Square

Southwark Council, working with the Greater London Authority and Network Rail, is regenerating the area in front of Peckham Rye Station. This project will transform the narrow, dimly lit passageways that lead to the station into a generous, vibrant public square.

This project has long been an aspiration of communities and residents in Peckham, since the idea was first suggested over 10 years ago. The beautiful Grade II listed station building will be enhanced and celebrated by its new surroundings. The exposed viaducts along the north and south side of the



Privacy settings



Conservation of historic waiting room, stair and wc's

Phase 1 of Station Square construction underway

## Media centre

Home > Media centre > National & regional news > Major upgrade of Peckham Rye station moves closer



Wednesday 1 Jul 2020

## Major upgrade of Peckham Rye station moves closer

Region & Route: [Southern](#) | [Southern: Sussex](#)

Improvements for passengers who use Peckham Rye station have moved a step closer this week with Network Rail receiving £1m from the Department for Transport to develop designs for a more accessible station with more capacity and better facilities for passengers.

Currently, Peckham Rye is the busiest interchange station in the entire country without step free access to platforms or accessible facilities for passengers.

Network Rail proposals aim to provide new lifts at the station, making all platforms accessible for parents with buggies, people with shopping and those with mobility issues. Accessible toilets are also part of the scope.

To allow for future growth in passengers, access to each of the platforms will be improved and the amount of space on each platform increased.

The project will consider how the station integrates with the surrounding public realm, particularly the new Station Square, providing better access into the station and a much larger gateline to ease passenger flow.

We use cookies to ensure that we give you the best experience on our website. If you continue to use this site we will assume that you are happy with it.

OK

<https://www.networkrailmediacentre.co.uk/news/major-upgrade-of-peckham-rye-station-moves-closer>

Station enhancement design funding approved

Project scope:

## 1.6. Objectives

### 1.6.1. Peckham Rye Station Enhancement Objectives

The following objectives have been established to guide the project's development and are captured in the Client Requirements and specified in the Strategic Outline Business Case submitted to Government in December 2019.

#### Objective A

To provide sufficient capacity to meet forecasted 2038 pedestrian entrance, exit, and interchange volumes.

#### Objective B

To provide accessibility for all from street to all four platforms.

#### Objective C

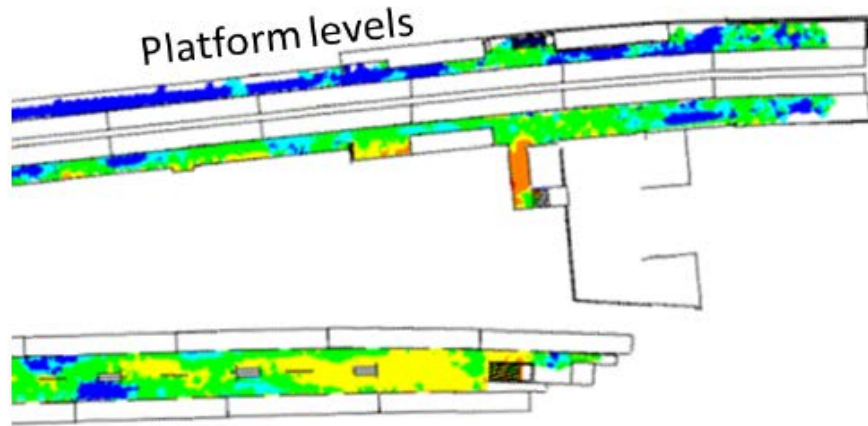
To reduce the risk to passenger and staff safety.

#### Objective D

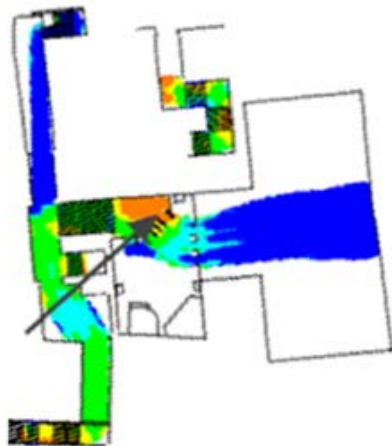
To significantly improve passenger satisfaction.

### Objective A - Capacity

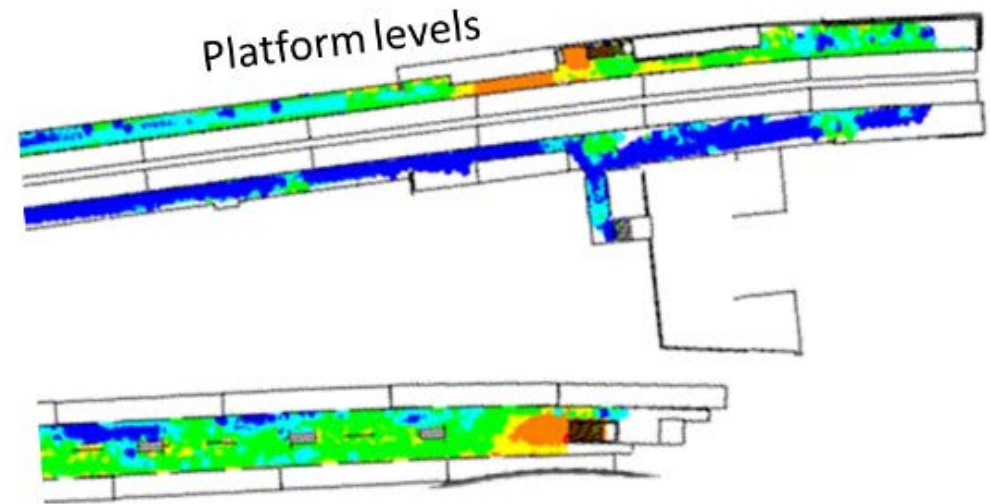
#### Morning Peak



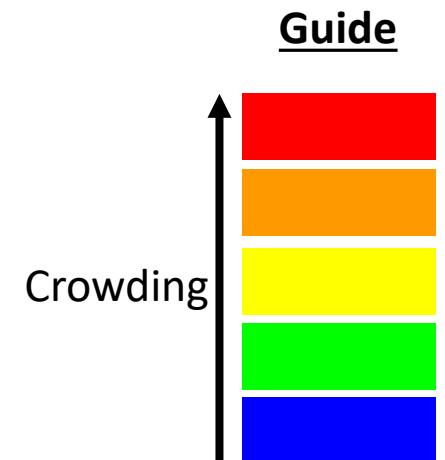
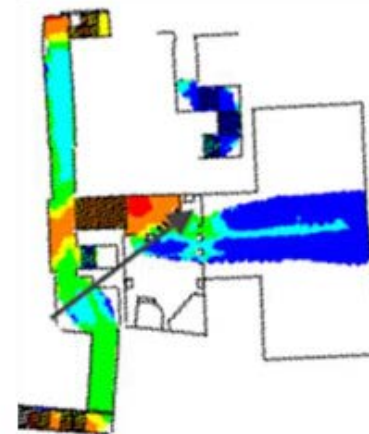
#### Corridors and entrance



#### Evening Peak



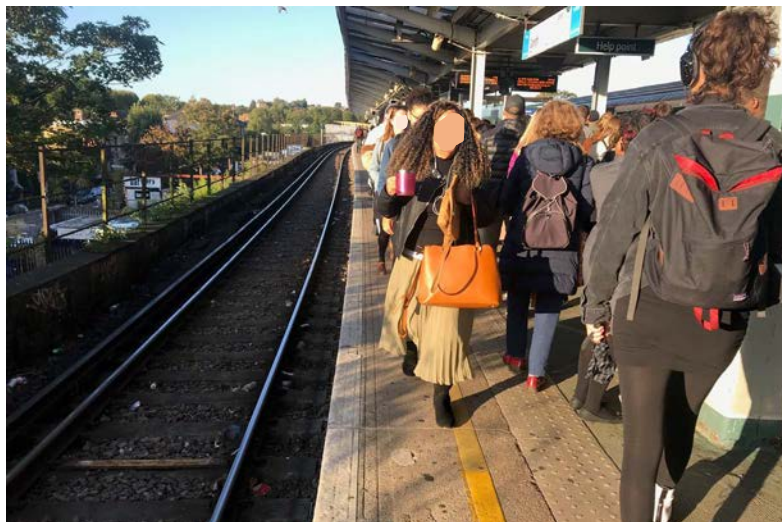
#### Corridors and entrance



# Peckham Rye Station Upgrade - First Public Workshop

## 1. Overview

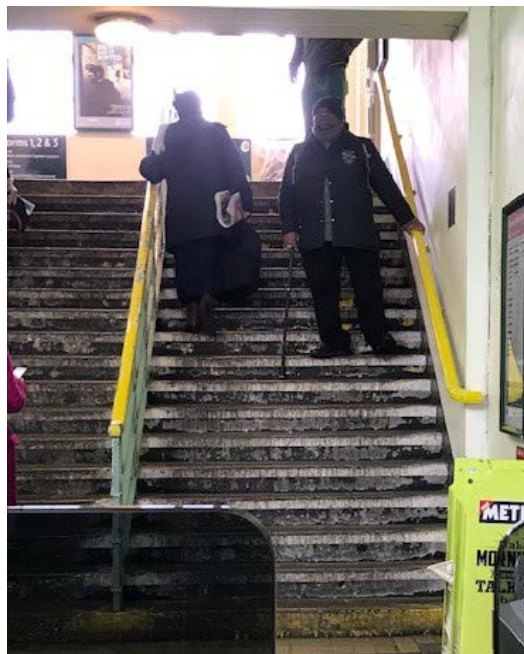
### Objective A - Capacity



Gateline and entrance

Platforms and stairs

## Objective B - Accessibility to all platforms





# Peckham Rye Station Upgrade - First Public Workshop

## 1. Overview

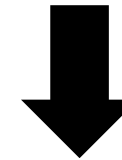
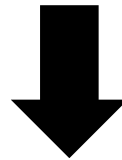
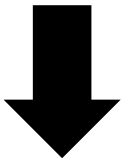
Objective C - Safety of passengers and staff



# Peckham Rye Station Upgrade - First Public Workshop

## 1. Overview

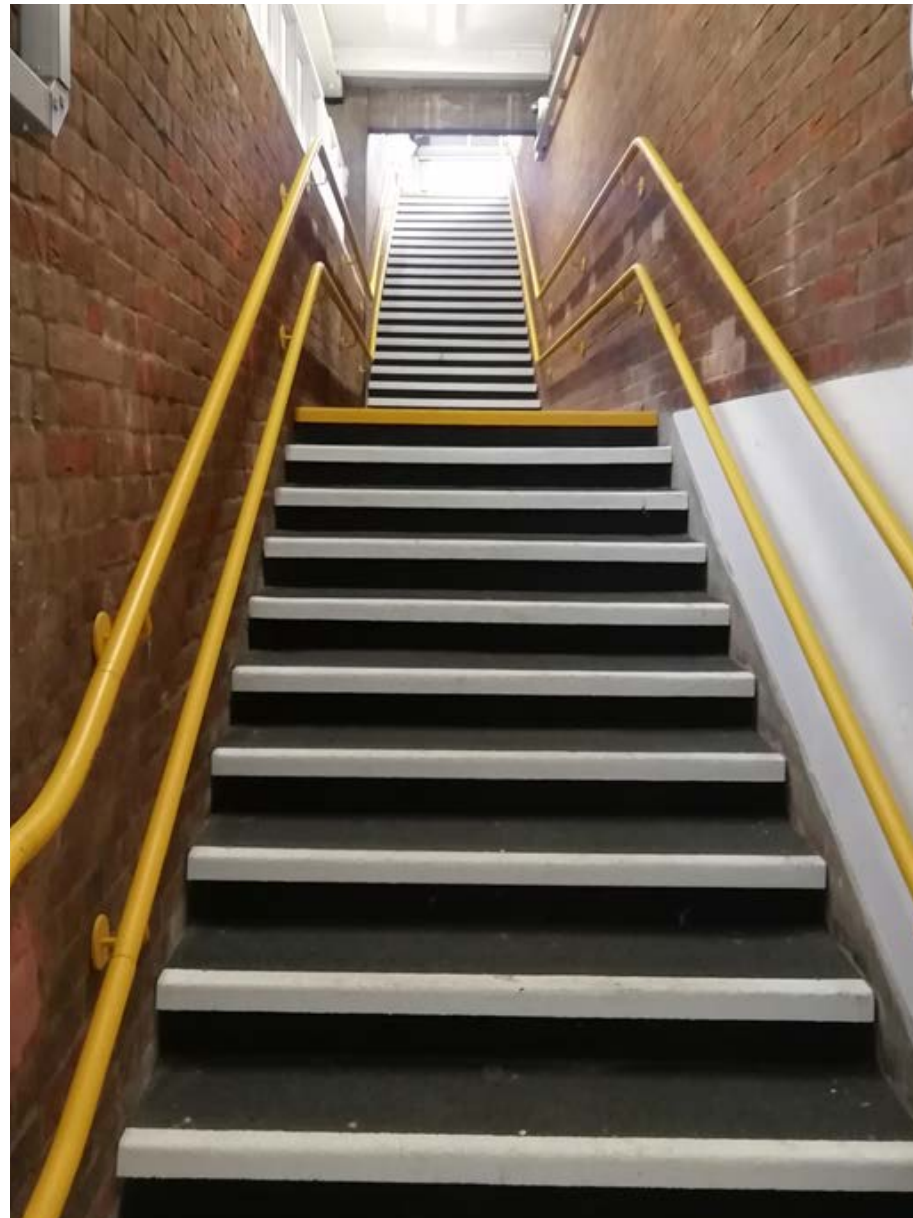
Objective D - Customer satisfaction - some early work



# Peckham Rye Station Upgrade - First Public Workshop

## 1. Overview

Objective D - Customer satisfaction - some early work



Recently re-opened Platform 4 stair

### Current Climate:

- Impact of COVID pandemic – demand has dropped by 70%
- Problems of congestion & overcrowding has disappeared, for now
- However, space needed for social distancing in station, in short term
- Government seeking to invest to boost an economy now clearly in a recession
- Government priorities maybe shifting away from alleviating congestion towards decarbonisation & improving connectivity
- Peckham Rye has a legacy crowding problem that analysis suggests will remain
- Providing 'Access For All' (i.e. lifts) remains a priority

Current Climate:

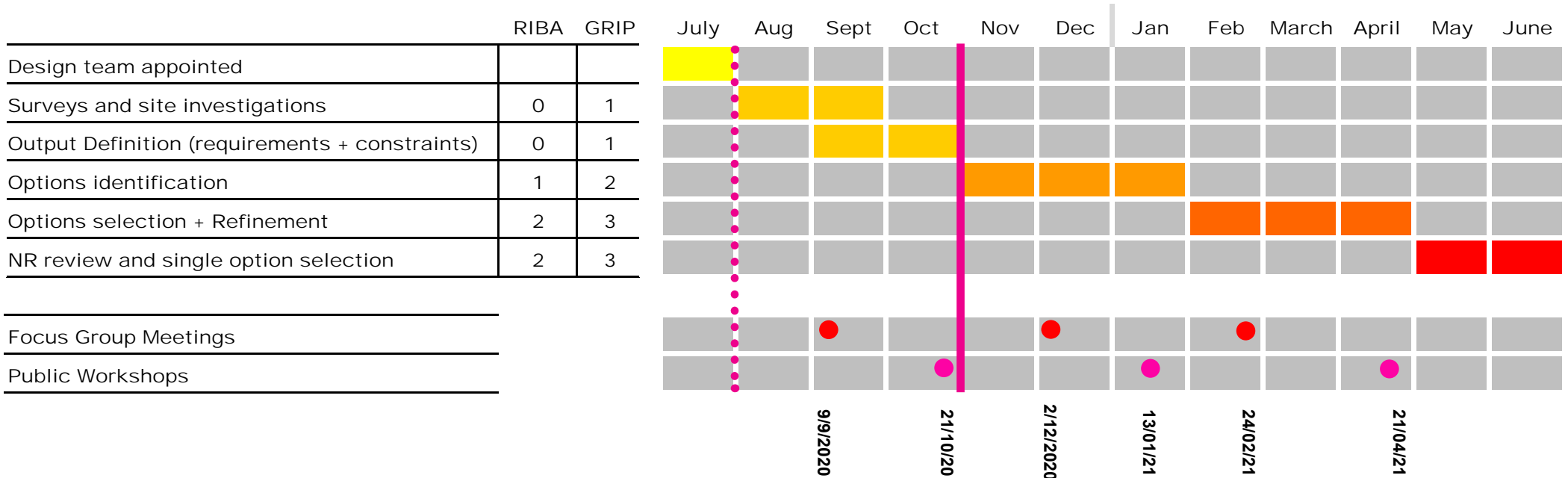
- Separate study considering platform extensions on 'Catford Loop'
- At a similarly early stage
- All 4 platforms at Peckham Rye included
- Likely westward extensions





# Peckham Rye Station Upgrade - First Public Workshop

## 2. Design Programme



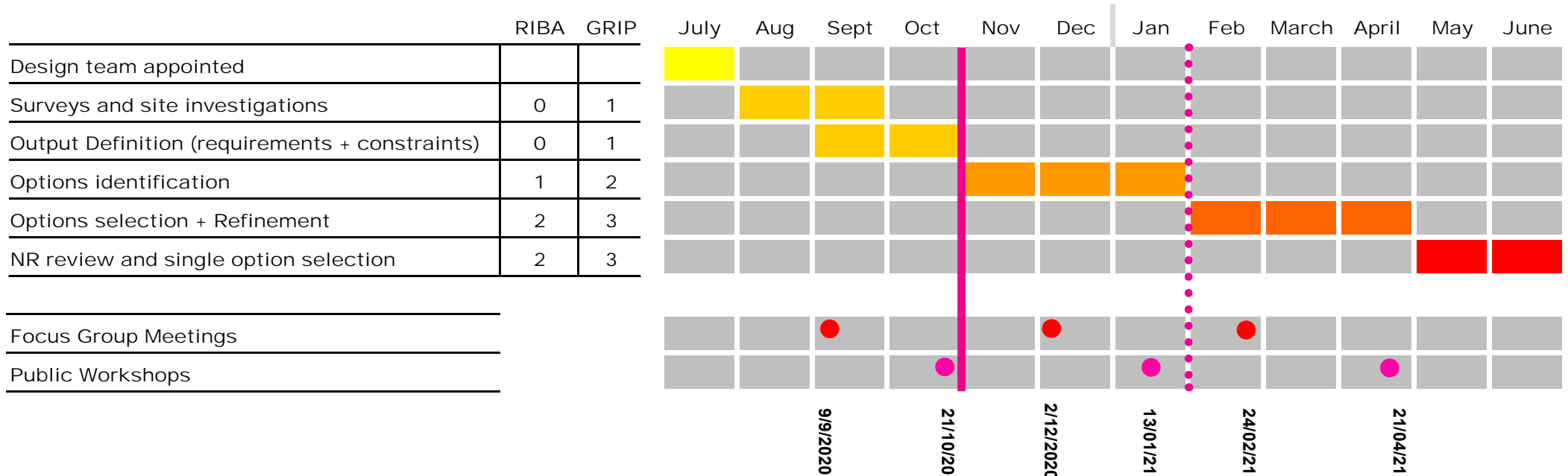
Work since team appointment:



- Project and design Team formed
- Desktop searches and data collection largely complete
- Topographic, services, utilities surveys largely complete
- Introductory meeting with local Focus Group
- 3d survey of whole station being prepared
- GRIP 1 output definition stage has commenced (functional briefing requirements)

# Peckham Rye Station Upgrade - First Public Workshop

## 2. Design Programme



Work in the next stage:



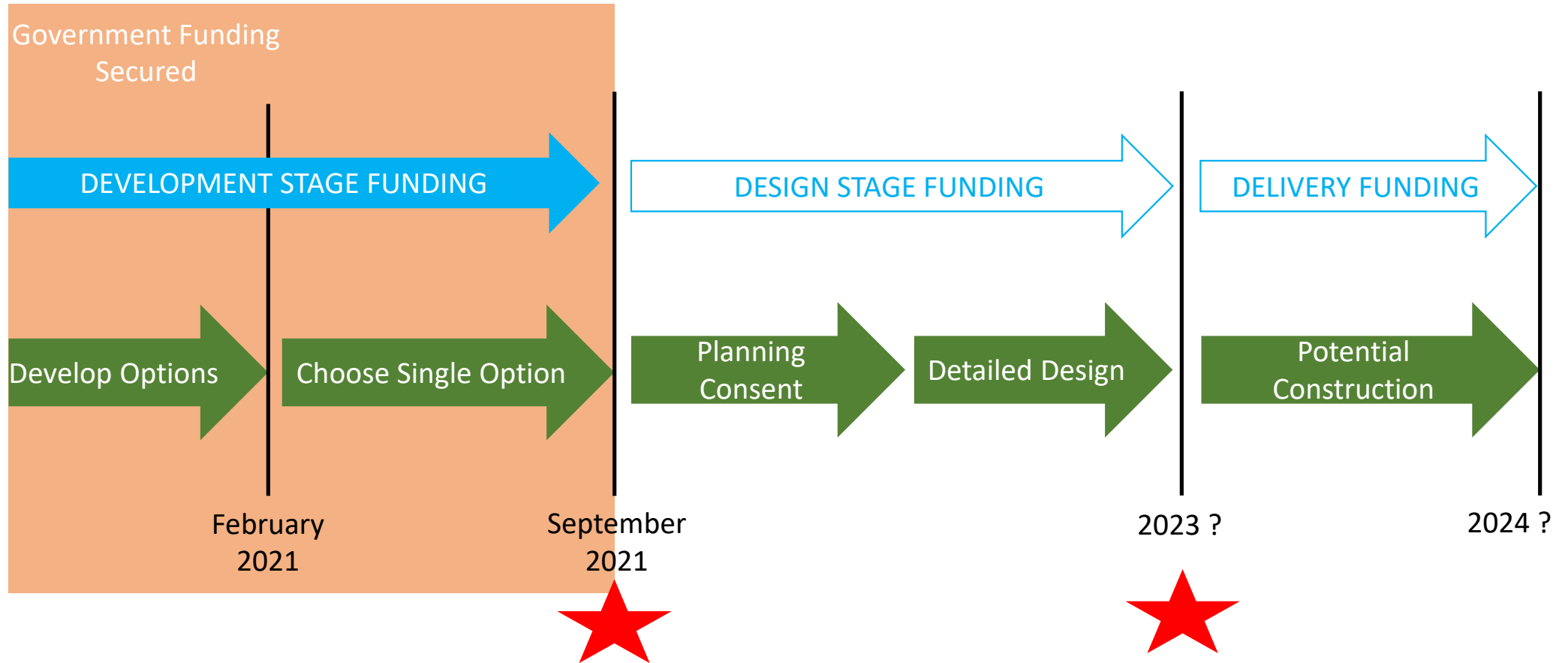
- Review and incorporate local community feedback
- Confirm functional briefing requirements
- Identify a range of options of rising complexity, investment and capacity
- Share initial options with this workshop group and collate feedback



# Peckham Rye Station Upgrade - First Public Workshop

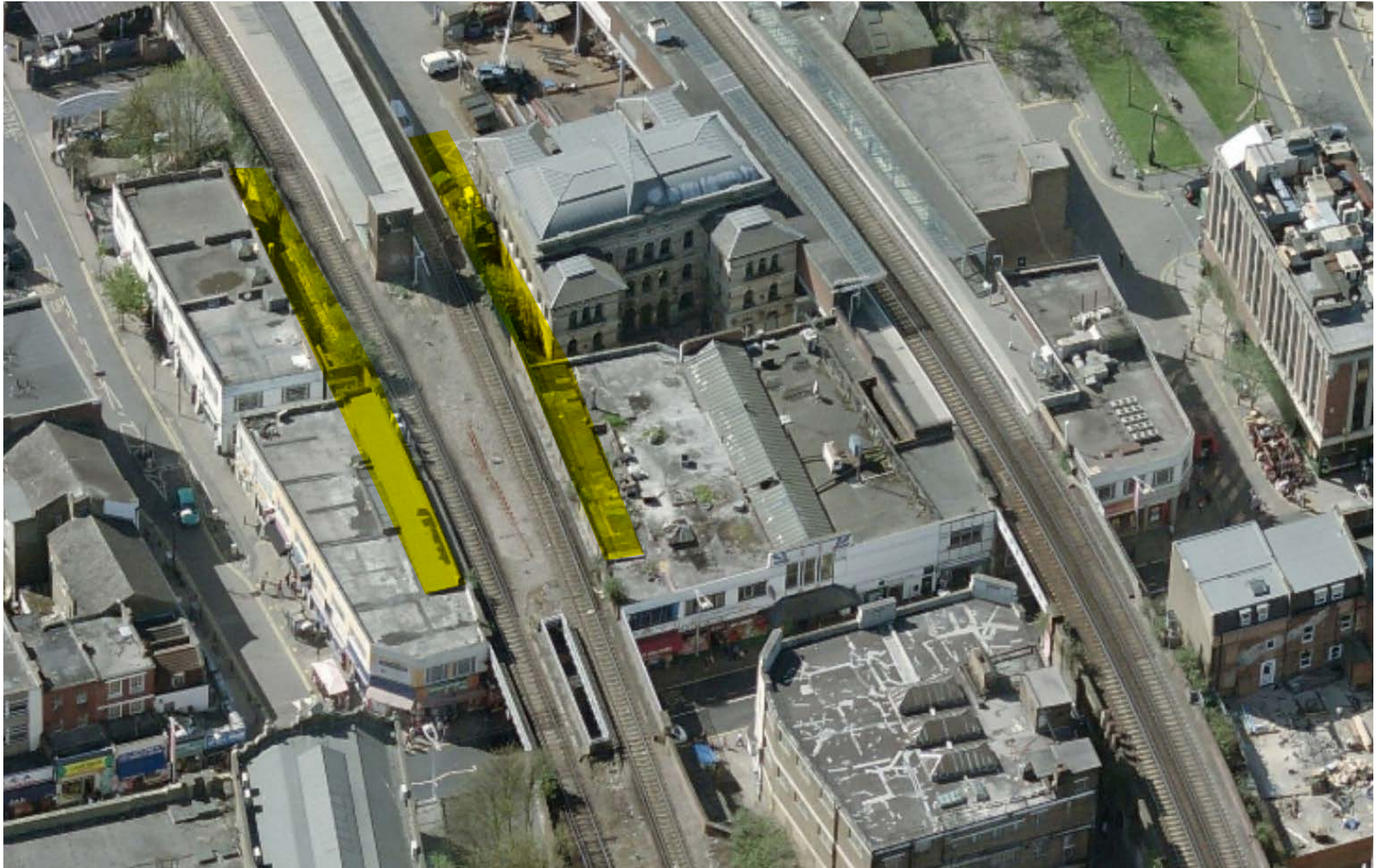
## 2. Design Programme

Progress beyond this stage of design:

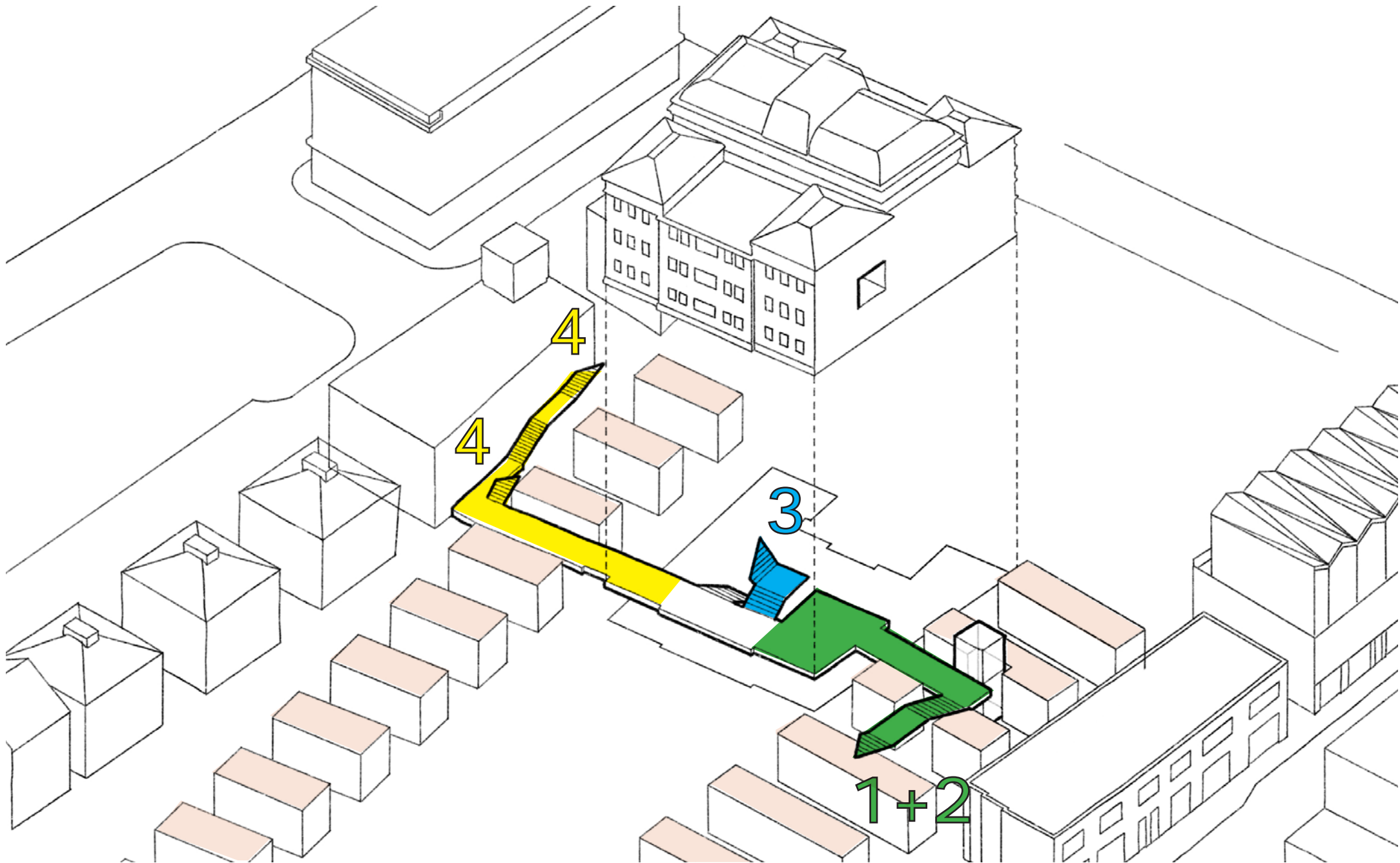


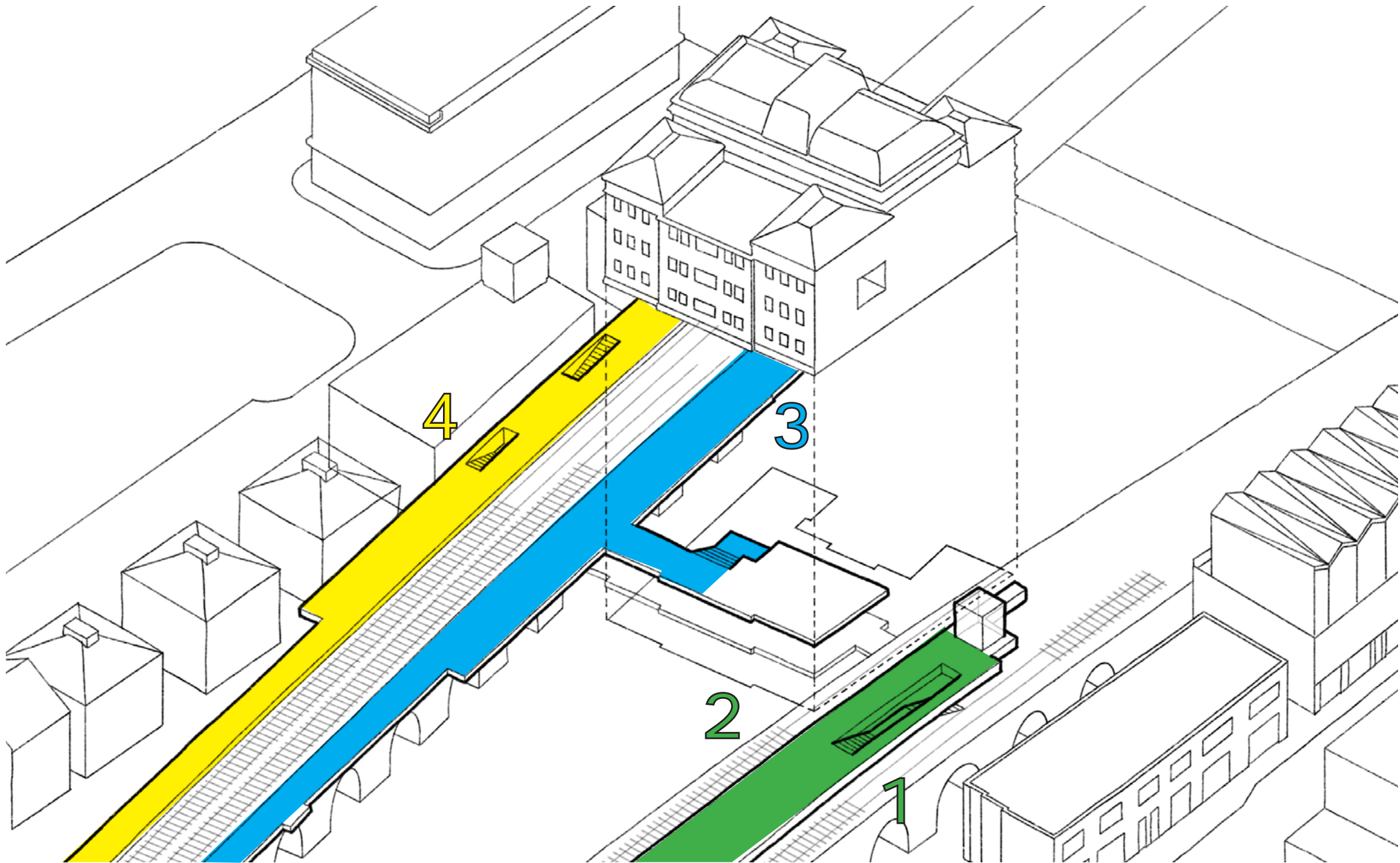


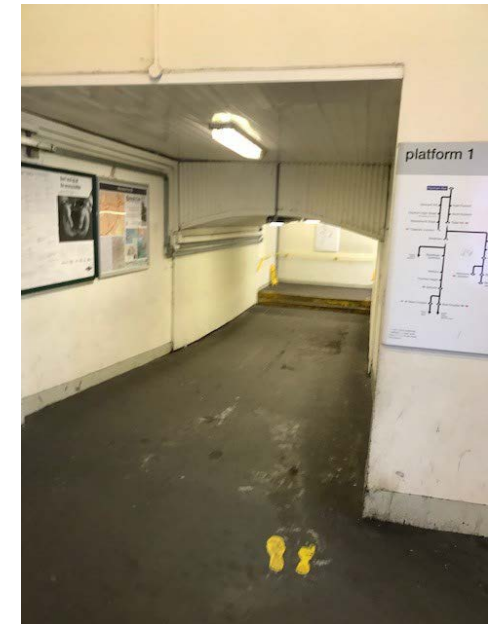
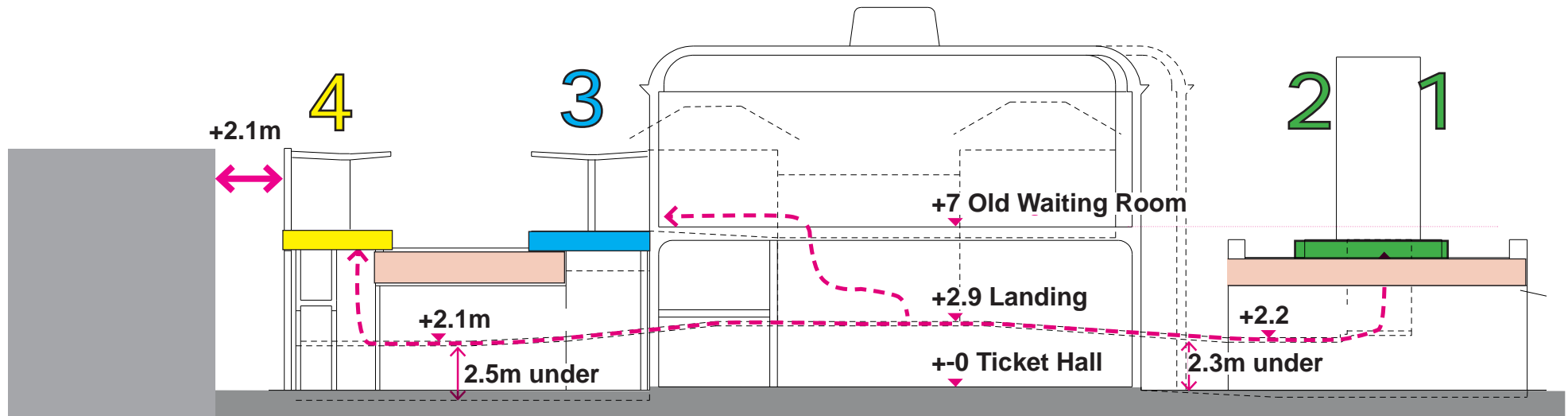




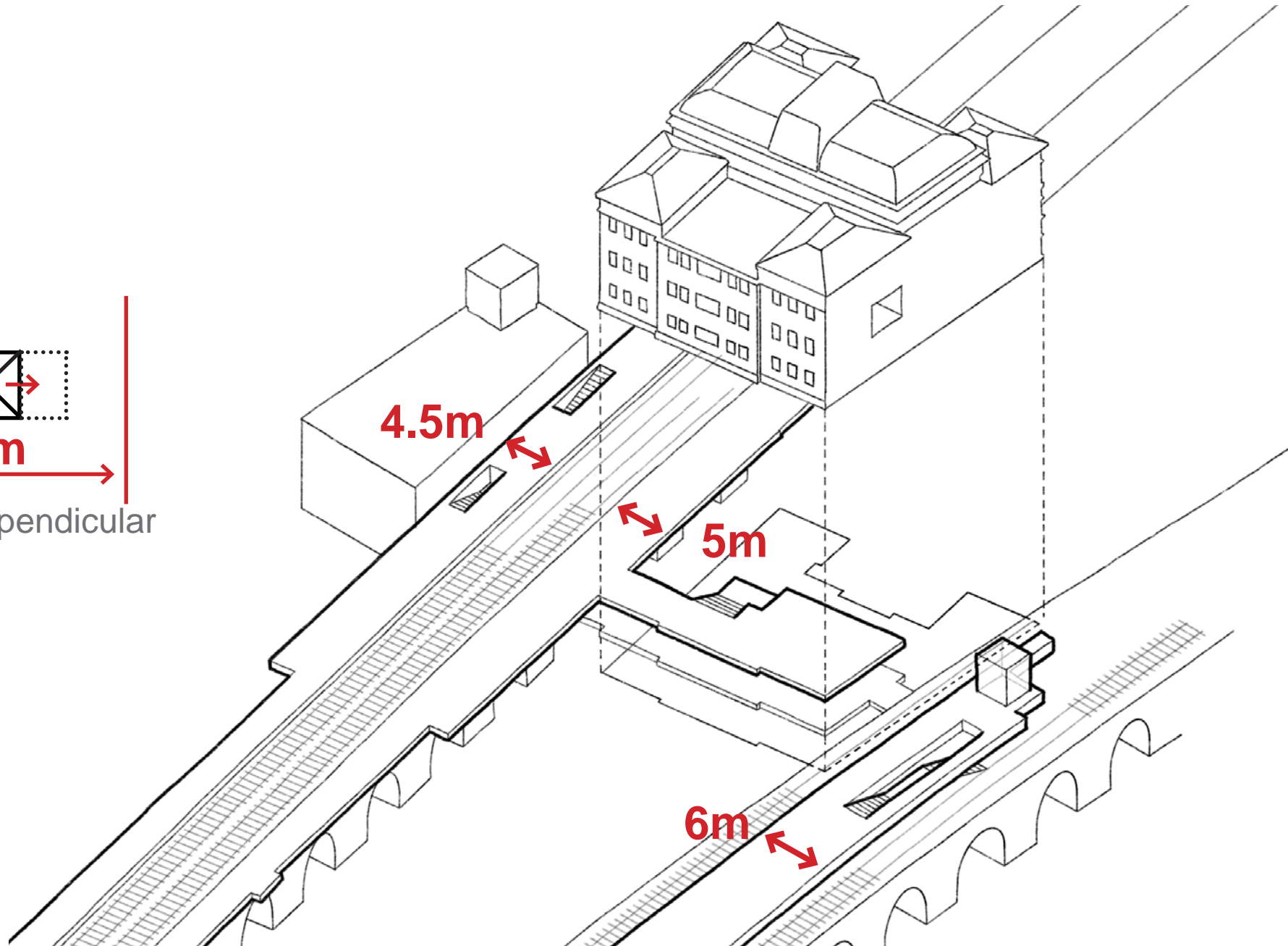
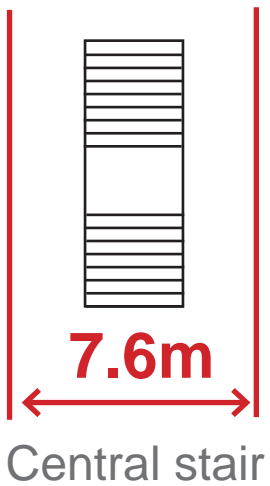
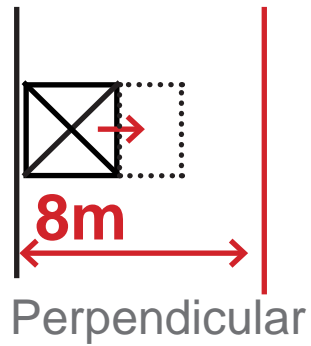
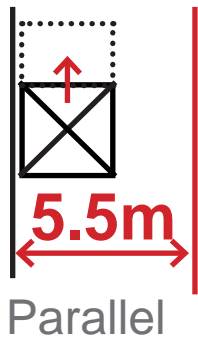
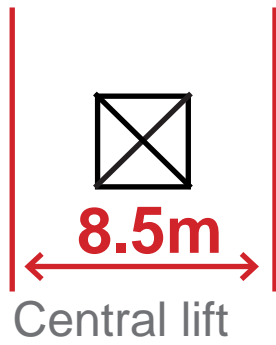


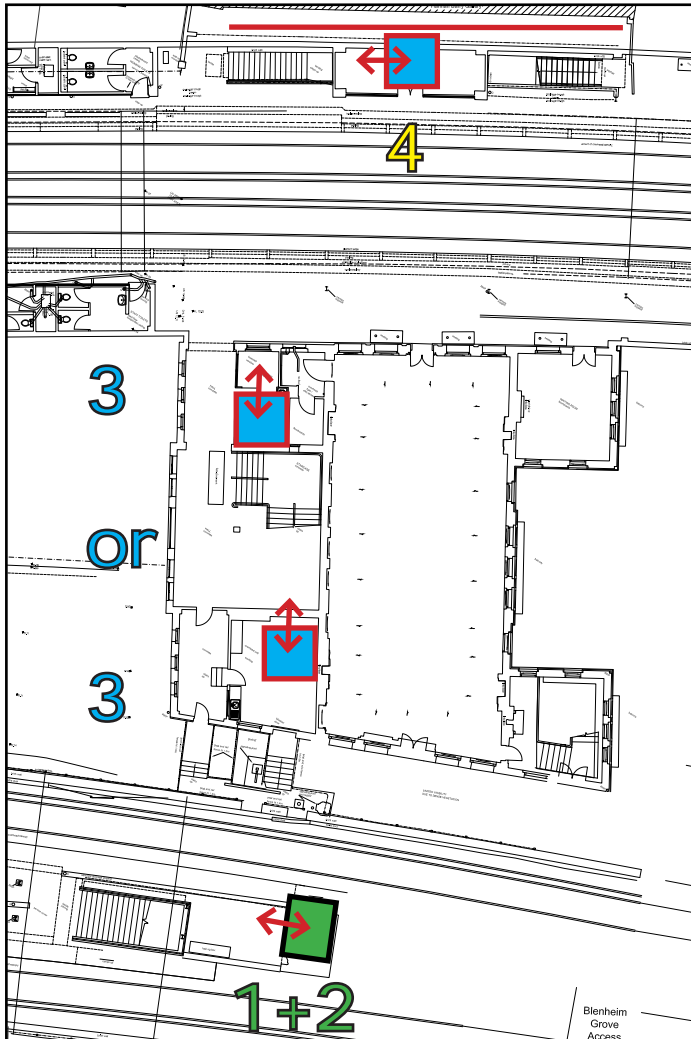




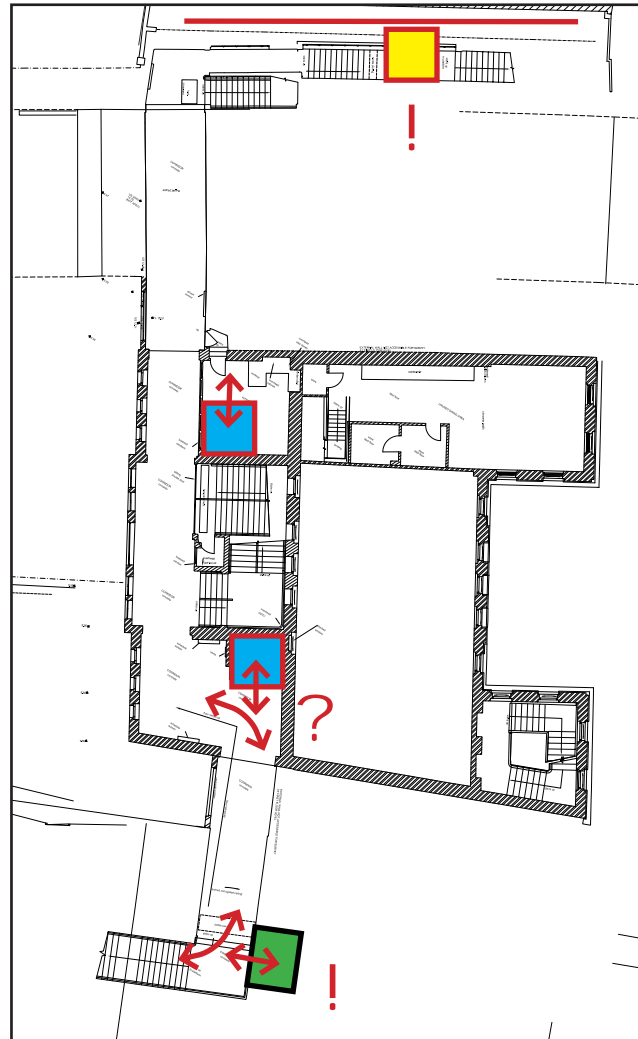




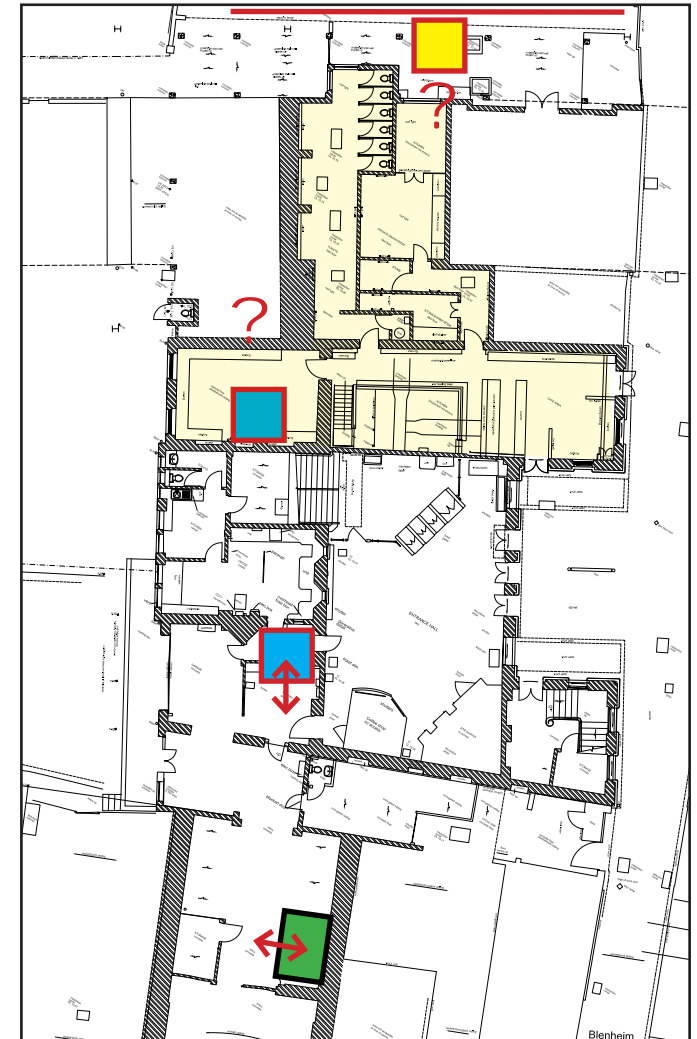




Platform level



Landing level



Ground level

Likely primary layout alternatives

cost / complexity

**A Step free access to all platforms**

Improvements to gateline and concourse arrangement

Reduction in support accommodation

Existing restrictions (corridors, ramp gradients, stair sizes) remain

Removal of platform 3 and 4 buildings, local narrowing of platform 4

Capacity issues on platform 1 and 2 remain

**B Step free access to all platforms**

Increase in concourse and gateline capacity

Existing corridor / ramp gradients partially improved

No need to narrow platform 4

Local improvements to ease capacity on platform 1 and 2

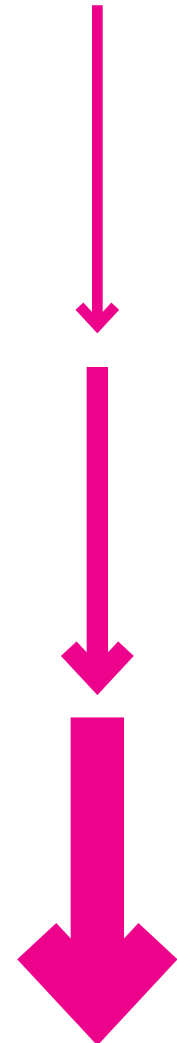
**C Step free access to all platforms**

Increase in concourse and gateline capacity

Existing corridor / ramp gradients improved

No need to locally narrow platform 4

Capacity issues on platform 1 and 2 fully resolved



- |               |   |
|---------------|---|
| 9th September | <b>Working Group Introduction</b>                             |
| 21st October  | <b>First project workshop to introduce the project</b>        |
| 2nd December  | <b>Working Group update on progress and day to day issues</b> |
| 13th January  | <b>Second project workshop to present initial options</b>     |
| 24th February | <b>Working group update on progress and day to day issues</b> |
| 21st April    | <b>Third project workshop to present preferred option</b>     |

## Peckham Rye Station Upgrade - First Public Workshop

## 4. Liaising with the community

**Information posters have been put up at the station and will be updated regularly**

**Network Rail's website is live - presentations will be shared and there is an updated issues log**

**The website includes a link to our direct email address**

**The website also includes a feedback survey**

**Please encourage people to contribute on-line if they can't attend workshops**

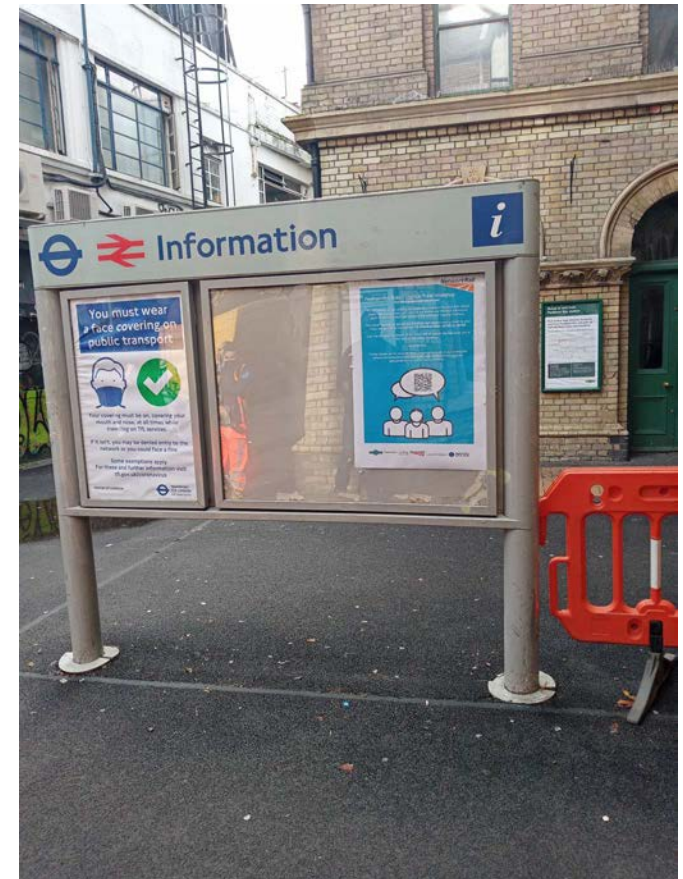
**Please encourage others to join our mailing lists and future workshops**

**Workshops will be on-line until further notice**

**Please spread the word (but not the virus!)**

<https://www.networkrail.co.uk/peckhamrye>


[NRSouthernProjects@networkrail.co.uk](mailto:NRSouthernProjects@networkrail.co.uk)



## Peckham Rye station upgrade

[Home](#) > [Running the railway](#) > [Our routes](#) > [Kent](#) > [South East upgrade](#) > [Peckham Rye station upgrade](#)

We are working with partners to develop designs for a fully accessible station with more capacity and better facilities for passengers.



In June 2020, we received £1m from the Department for Transport to develop designs to improve the station for passengers.

Currently, Peckham Rye is the busiest interchange station in the entire country without step free access to platforms or accessible facilities for passengers.

The station is also not designed for the current number of passengers using it today. Platforms, passageway and gate lines are too narrow, leading to overcrowding at peaks times.

### Our proposals

We are currently developing designs for which would aim to:

- Provide new lifts to all platforms and accessible toilets
- Wider platforms, larger passageways, new lifts and staircases
- Larger gate lines and entrances
- Improved integration with the surrounding public realm, including better access into the station

We use cookies to ensure that we give you the best experience on our website. If you continue to use this site we will assume that you are happy with it.

Ok

- New accessible toilets
- New lifts at the station, making all platforms accessible for parents with buggies, people with shopping and those with mobility issues




### Increased train and passenger capacity

- Wider platforms, larger passageways, lifts, new staircases, larger gate lines and entrances would increase capacity for passengers and allow more trains to stop at the station in the future.

### Improved integration with local public realm


- The project will consider how the station integrates with the surrounding public realm, particularly the new Station Square, providing better access into the station.

### Focus Group documents

<b>Focus group latest presentation (PowerPoint)</b>		13 MB
<b>Minutes and Action tracker (PDF)</b>		149 KB
<b>Updated Active Issue Log (PDF)</b>		371 KB

### Feedback survey

We would like you to provide your feedback on this project. Please complete the short survey, where you can provide your comments.

	<b>Peckham Rye station feedback survey</b>
---	--

### Next steps

The project aims to produce and agree a single option design by September 2021. In the months ahead we will be engaging with stakeholders and people from the local community, to seek their views on the future design of the station .

### Contact us

For more information, call our National Helpline on 03457 11 41 41 or contact us on [Twitter @NetworkRailSE](#).

We use cookies to ensure that we give you the best experience on our website. If you continue to use this site we will assume that you are happy with it.

Ok


**← Presentations**

**← Actions tracker**

**← Issues log**

**← Feedback Survey**

10/16/2020 Peckham Rye station upgrade feedback



Network Rail is working with partners to develop designs for a fully accessible Peckham Rye railway station with more capacity and better facilities for passengers. We would like to get input from the local community to help inform our decisions.

We aim to produce and agree a single option design by September 2021.

Please share your views in this short survey which should only take a few minutes to complete.

**How regularly do you use Peckham Rye railway station?**

Daily  Weekly  Monthly  Occasionally  Never

**What is your current perception of the station?**

Type your answer here

**What are the top three improvements that you think should be made to Peckham Rye railway station as part of a future upgrade?**

Type your answer here

**How should Peckham Rye station integrate with the surrounding area?**

Type your answer here

**Would you be interested in taking part in a few workshops to review and comment on design options?**

Yes  No

← How frequently do you use Peckham Rye railway station?

← What is your perception of the station?

← What top three improvements should be made?

← How should the station integrate with surrounding areas?

← Would you be interested in taking part in design workshops?

# Your questions

