

Issue 6

# Leeds Station Improvements

Find out more at [networkrail.co.uk/LSI](https://networkrail.co.uk/LSI)





## Hello

The project to construct the new Platform Zero is now in the home straight and we aim to have all major works complete by the end of December (2020).

Between now and then we have just two major weekends of engineering works left, with the first due on Saturday October 31 – Monday 2 November as highlighted in the accompanying letter.

However, we will have to continue working on the project day and night to meet the planned December completion date, with occasional disruption expected that we will do our best to minimise.

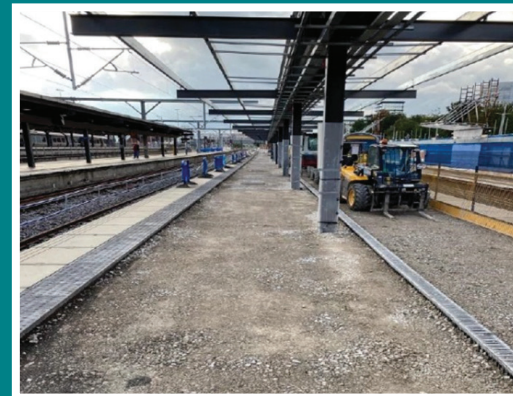
We would like to again thank you for your continued patience whilst work has continued during COVID-19 and recognise that many more people may currently be working from home, and therefore noticing the work to a higher degree than usual.

Please feel free to get in touch if you have any queries or concerns.

## Construction Update – what we have done

You may well have noticed the visible progress that is now being made to construct Platform Zero and its associated infrastructure. To summarise:

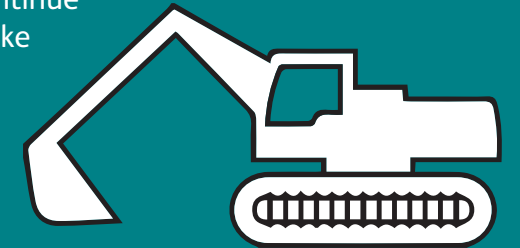
- The old Platform 1 has now been completely dismantled and you will see the new platform layout is taking shape that will accommodate the new Platform Zero.
- Recent activity to construct Platform Zero has involved building the new platform, steel roof canopy, preparing overhead lines and carrying out some track work.
- The temporary Platform 1 is due to be decommissioned on Monday 2 November with the brand-new 274m long Platform 1 brought back into service with new track, platform, overhead electric wires and sheltered roof canopy.



You can find the latest information on upcoming work by visiting:  
**[networkrail.co.uk/LSI](https://www.networkrail.co.uk/LSI)**

## Upcoming Disruptive Work

Overnight work will have to continue for the final few months to make sure we complete all work on time by the end of the year.



I appreciate this is not ideal but it is unfortunately unavoidable to allow us to work on the tracks. The good news is that we are on the final phase of our piling programme which is nearly complete.

There is a detailed noise mitigation plan in place, which encompasses trying to limit what we deem as ‘noisy’ activity to daytime hours - such as wagon stone deliveries, concrete break-out, and general machinery movements – however, some of this will have to still be done at night when trains are not running so that we can continue to work on the railway.

### Key Dates:

- From Saturday October 31 – Monday 2 November we will be taking possession of the railway and continuously working 24/7 which is expected to be more noticeable. This work will focus on signalling upgrades, installing overhead electric wires and further work on the new platform surface.
- The final busy weekend of major work will take place from Friday 25 December – Sunday 27 December which will result in the opening of the new Platform Zero.
- 2021 New Year – the construction compound will stay open and reconfiguration works to the car park will take place to re-introduce long-stay passenger parking to the station.

# Construction Photos



# Any Questions



If you have any questions you would like to ask the project team, you can contact our National Helpline:

**03457 11 41 41**

**[networkrail.co.uk/contact](https://www.networkrail.co.uk/contact)**

To keep up-to-speed with the improvement work at the station visit:

**[networkrail.co.uk/LSI](https://www.networkrail.co.uk/LSI)**

**[@NetworkRailLDS](https://twitter.com/NetworkRailLDS)**