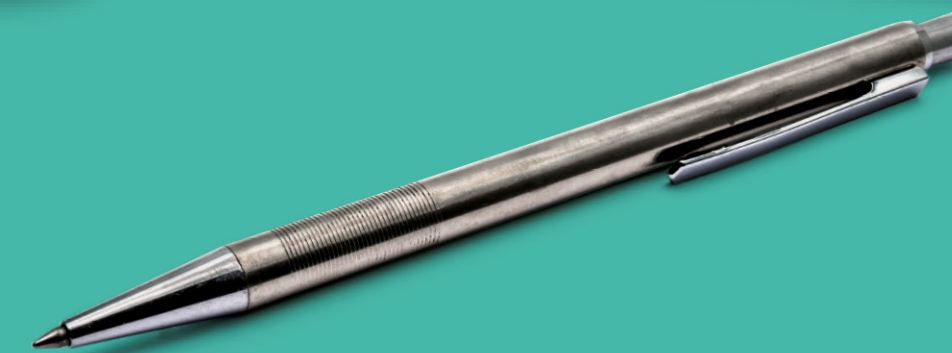


**SHAPE YOUR  
TOMORROW**





# OUR REGIONS

---



## ...STARTING TODAY

We're currently restructuring our business to create a more service driven organisation that puts passengers first. To help with this transition, we're removing the old centralised system that controls it all, and instead creating more autonomy by introducing 5 new regions (Eastern, North West & Central, Scotland, Southern and Wales & Western) and one Group Property team.

As part of this change, there are a number of exciting opportunities at all levels within all the new teams.

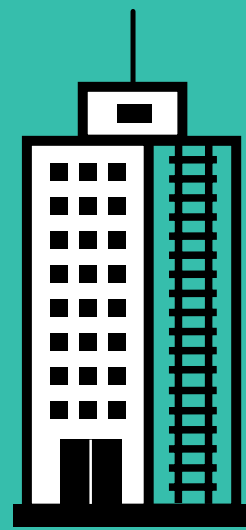
Are you the sort of person who loves the challenge of working on something new? Does the prospect of being part of a new team of Property Professionals with a diverse range of skills appeal to you? If so, we'd like to hear from you.

## Shape your future today.

# WHO WE ARE

**Network Rail own, operate and develop Britain's railway infrastructure – that's 20,000 miles of track, 30,000 bridges, tunnels and viaducts and thousands of signals, level crossings and stations.**

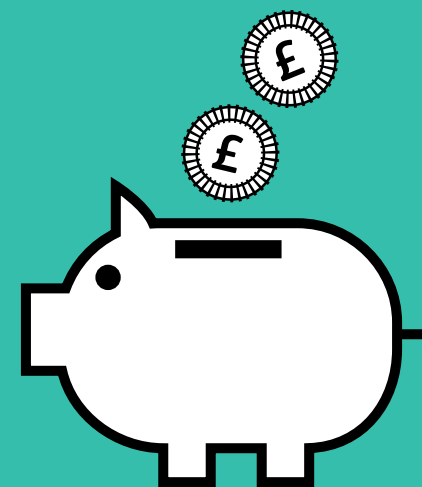
## Property in numbers:



**2,800 small to medium-sized business spaces**



**Retail across 19 of Britain's busiest stations**



**Property revenue of £200 million + each year**

The Property division is accountable for the management of Network Rail's land and property assets. Across our property business units, we specialise in delivering acquisitions and land and town planning strategy to support the company's operational ambition; property development, commercial lettings in our stations and wider estate; and management of our corporate office accommodation.

We also create exceptional spaces that provide passengers with great environments to eat, drink, shop and relax, while allowing businesses to thrive.

We expect substantial growth and have significant plans to be delivered over the coming years. These are supported by three strategic priorities:

- **To significantly grow our revenue**
- **Provide high-quality professional services to reduce industry costs**
- **Delight our customers by putting them at the heart of everything we do**

To date, our division generates over £200m each year, which is reinvested so we can continue improving our railway, now and into the future.

# UPCOMING ROLES AND WHERE TO FIND THEM

---

Over the next 6 months, Network Rail Property will be recruiting for around 40 new people. There will be opportunities available at a number of levels and in all teams throughout the country.

For further details please keep a look out for job adverts:

on the Career page of the Network Rail website ([networkrail.co.uk/careers/](https://networkrail.co.uk/careers/))

LinkedIn ([linkedin.com/company/network-rail/](https://linkedin.com/company/network-rail/))

Twitter ([twitter.com/networkrailJOBS](https://twitter.com/networkrailJOBS))

as well as the Property Week and the Estates Gazette.

## WHO YOU ARE

---

AGILE  
ENTHUSIASTIC  
CUSTOMER FOCUSSED

---

You are someone who is keen to do things differently. With a passion for customer service and a determination to make a difference. You'd like your impact to be more than a job. You want your impact to actually make a difference. You believe in a more balanced working life.





# BENEFITS

---

We can offer you a rewarding career with competitive pay and excellent benefits including a bonus scheme, a generous annual leave package, a choice of contributory pension schemes and an annual subsidy on season tickets.

**In addition, you can expect to receive:**

- Performance related pay
- Flexible working hours
- Healthcare support





# TIME TO SHAPE YOUR TOMORROW

**APPLY TODAY**

[www.networkrail.co.uk/careers](http://www.networkrail.co.uk/careers)

Late applications  
will not be accepted.  
We retain the right to  
close the advert before  
the listed closing date  
based on application  
volumes.

FOLLOW US ON:

