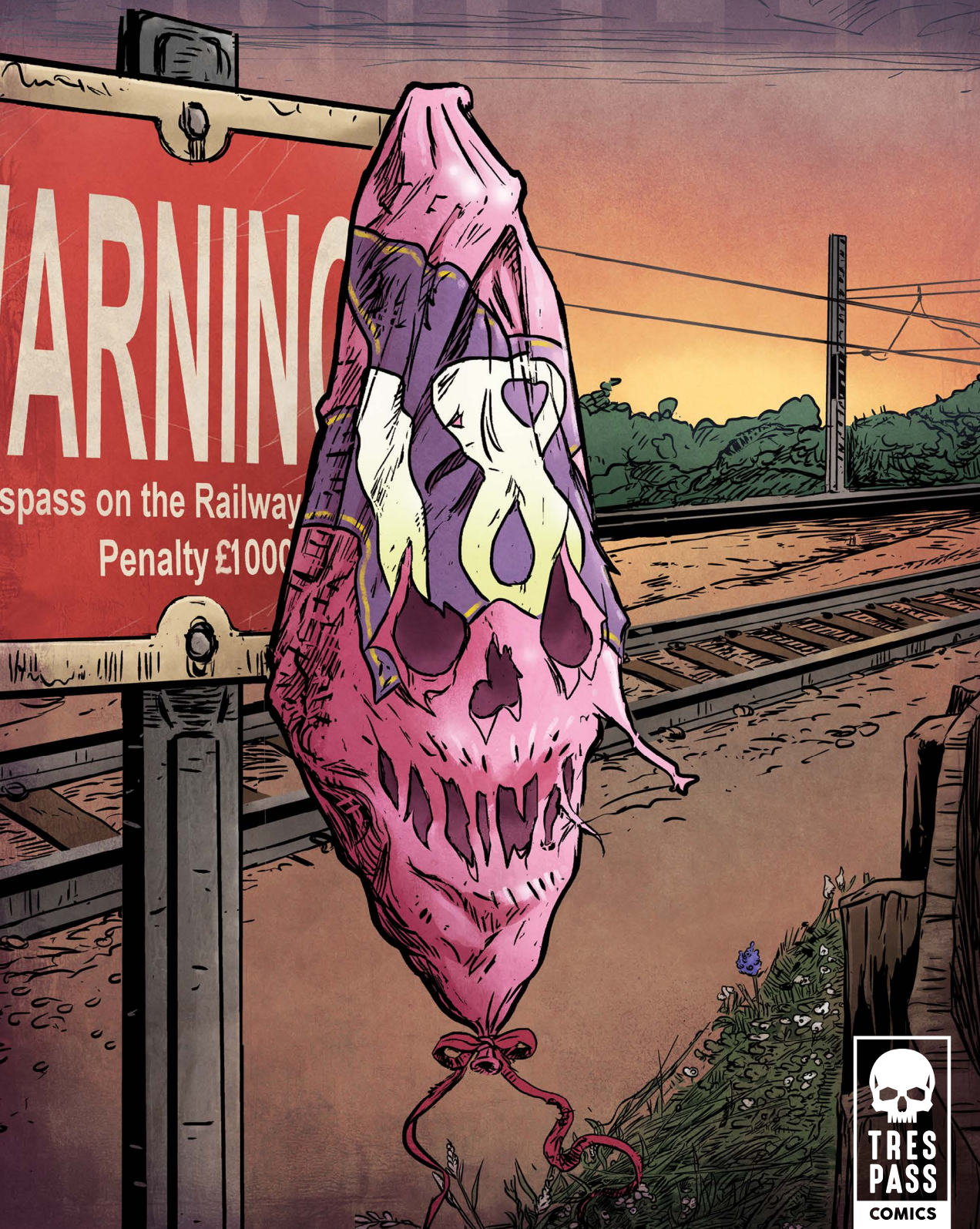


BASED ON THE AWARD-WINNING
SHORT FILM 18
PRICE £25,000 VOLTS*

ISSUE
#1

SPARKS WILL FLY



TRES
PASS
COMICS



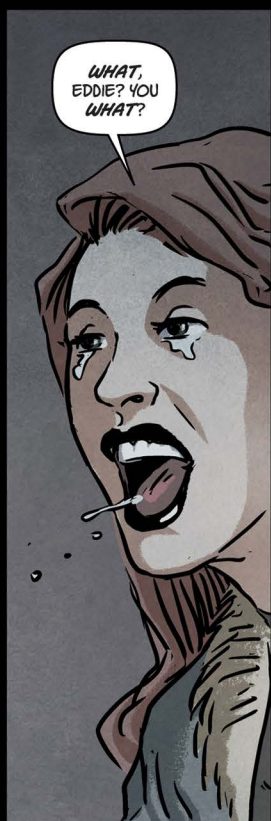
Richmond A Clements – Writer | Gary Crutchley – Line Artist | Matt Soffe – Colour Artist | Bolt-01 – Letterer
Steve Tanner – Editor & Talent Co-ordinator

Commissioned by Stuart Humphreys – Network Rail
Agency – 23red

Story based on the award-winning short film 18. Watch it here.







THE WEEK BEFORE.

I DON'T
KNOW WHAT
TO DO!

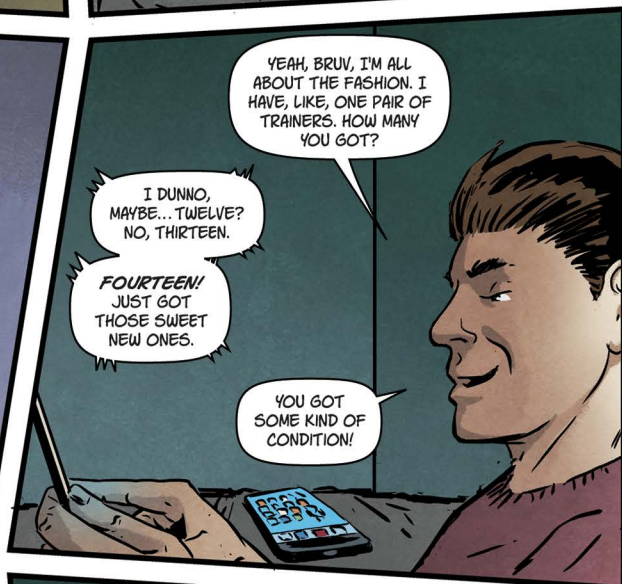
CROUCH,
BRUV! PRESS
CROUCH!













SORRY. I DIDN'T MEAN TO...

IT'S COOL, MAN. YOU GET USED TO IT.

I KNOW THE FEELING. LEAST YOU AIN'T GOT A BIG BROTHER PLAYING DAD.



HE'S JUST LOOKING OUT FOR YOU, Y'KNOW.

WELL, HE DON'T LIKE ME, SO IT EVENS OUT.

YEAH, I KNOW. STILL DON'T HAVE TO LIKE IT THOUGH, YEAH.



THAT DOESN'T MAKE SENSE, EDDIE.

I KNOW, BUT IT SOUNDED WICKED SMART. RIGHT?

IF YOU SAY SO, BRUV...



YOU PICKED A SHIRT YET?

I GOT IT NARROWED DOWN TO TWO.

WHICH TWO?



PINK OR CHECKED.

GO WITH THE PINK.

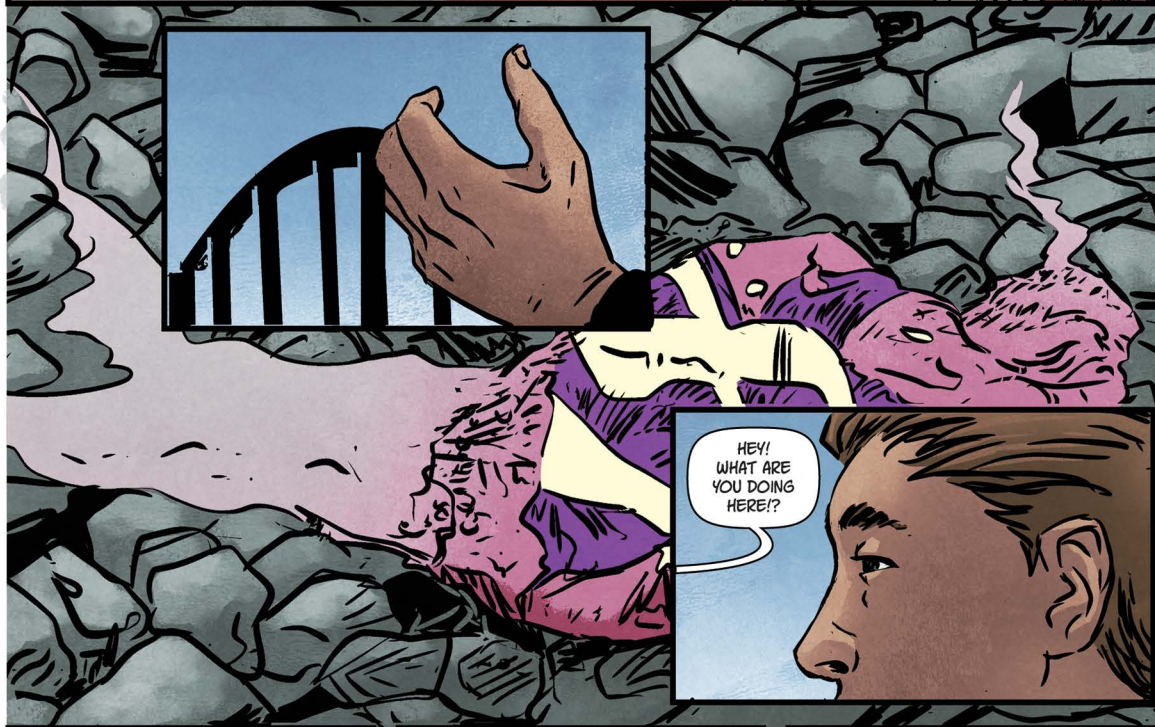
YOU SURE?

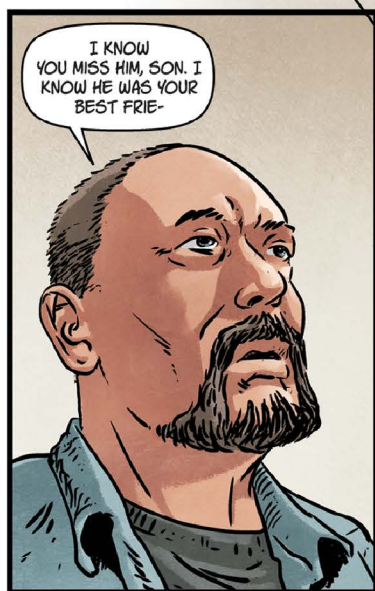
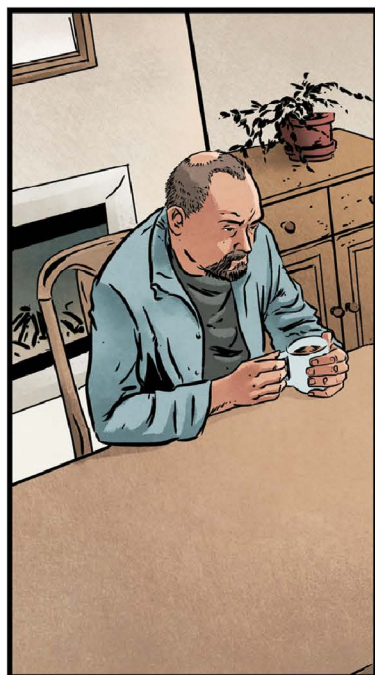


ABSOLUTELY.

I DON'T KNOW WHAT I'D DO WITHOUT YOU, BRUV.

AH, IT'S NOTHING - IT'S WHAT FRIENDS DO, RIGHT?







EDDIE...



NO. THIS CAN'T BE...



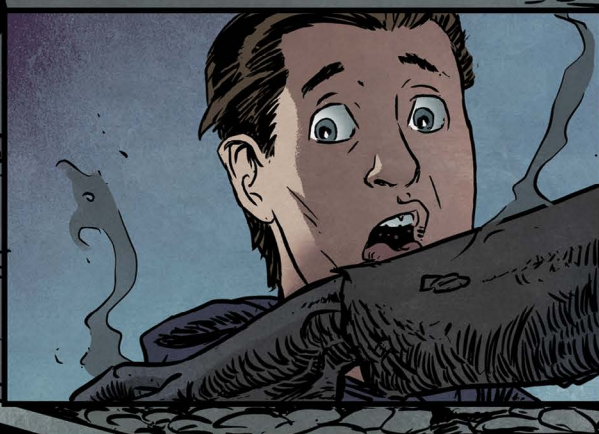
I TRUSTED
YOU, EDDIE.



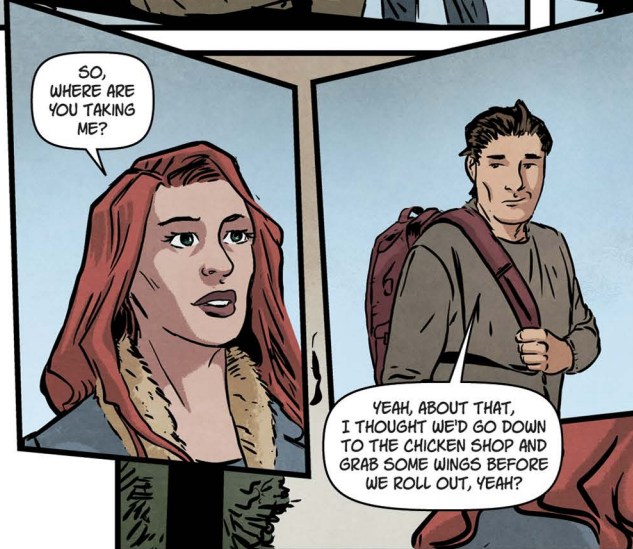
YOU WERE
MY FRIEND,
EDDIE.

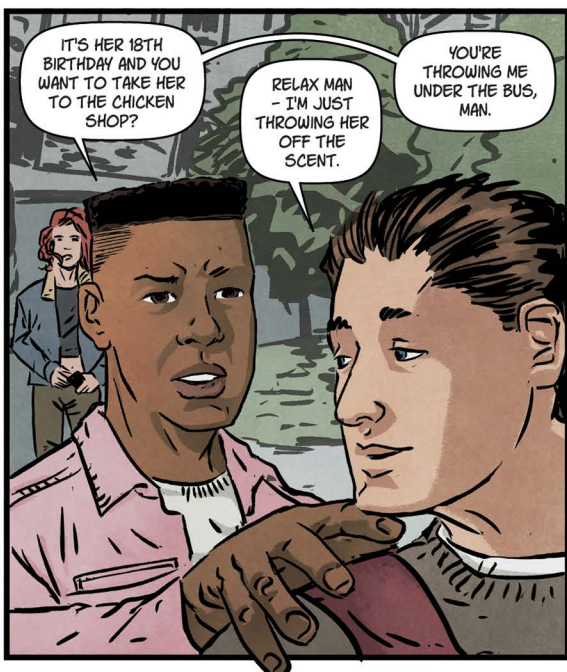


WHY DID
YOU LET THIS
HAPPEN TO ME,
EDDIE?

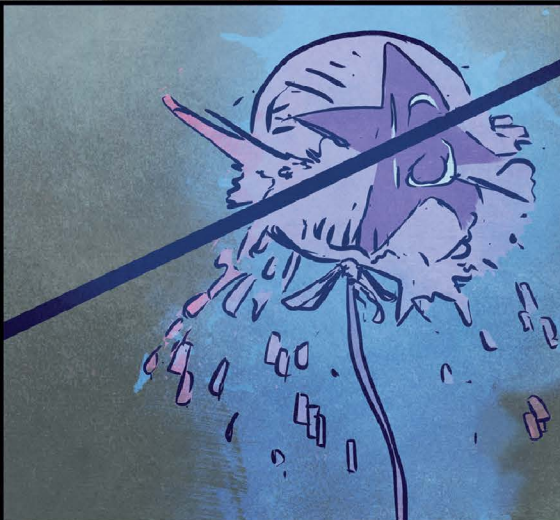
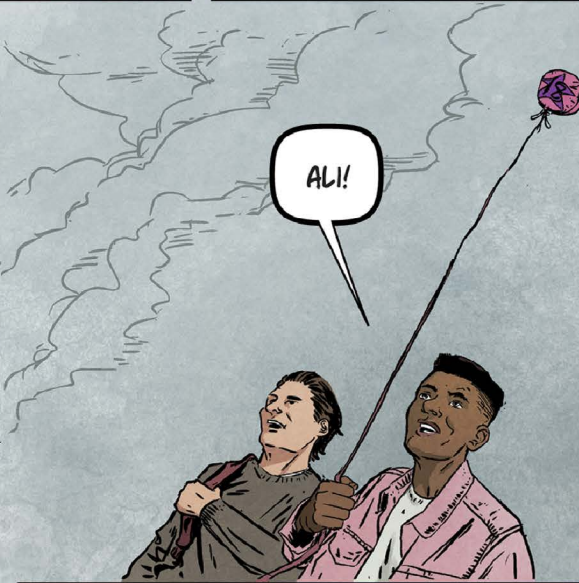










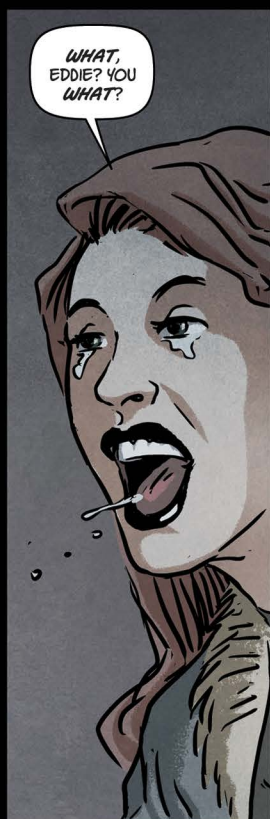


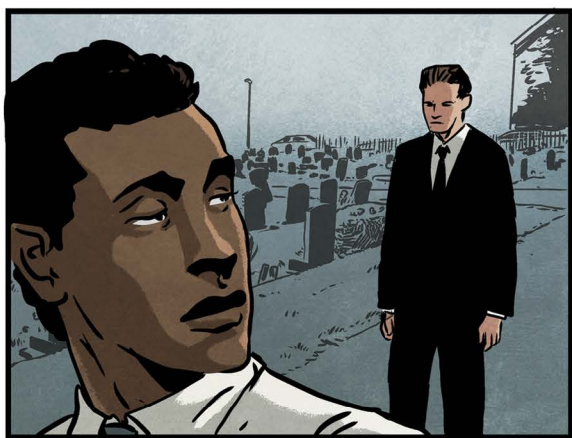


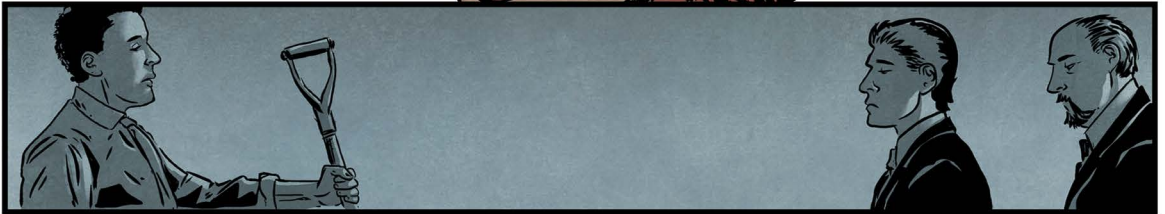












I can help you on your journey, or stop you dead in your tracks.



The electrified Midland Main Line will carry quieter and more reliable trains.
But it also means there'll be a deadly 25,000 volts running along the line
at all times. So remember the danger you can't see.

ELECTRIFIED LINES ARE

ALWAYS ON.

**SO ALWAYS
STAY OFF.**

Learn more at networkrail.co.uk/alwayson

"I...I...I...don't know what to do!"

