



Crossrail West Stations Newsletter

April 2020

Welcome

Welcome to our latest update on the work we are undertaking to enhance and upgrade a number of stations in West London, ready for the Elizabeth line.

Responding to COVID-19

With the Coronavirus (Covid-19) situation evolving at a rapid pace, we have been regularly reviewing our construction and contingency plans to mitigate as much risk as possible to both our staff and the communities in which we are working.

Following announcements by the government and guidance from Public Health England, we have taken the tough decision to temporarily suspend construction works at all six stations to help us play our part in limiting the spread of Coronavirus during these unprecedented times. This is in line with the recent announcement from Crossrail Limited and Transport for London.

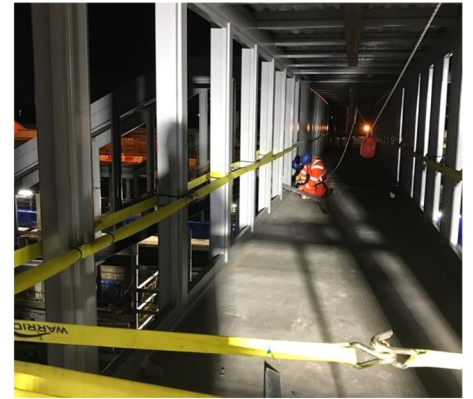
All station sites will still be regularly monitored by a safety and security team.

We will keep you updated as the situation evolves and will continue to follow government guidelines throughout this challenging time. Please be assured that we are continuing to work on robust plans with our contractors to ensure that construction works can efficiently recommence when the time comes.

Station by station update

At **Acton Main Line** we have finished installing the windowsills to the stairs of the footbridges on platform 2/3 and platform 4.

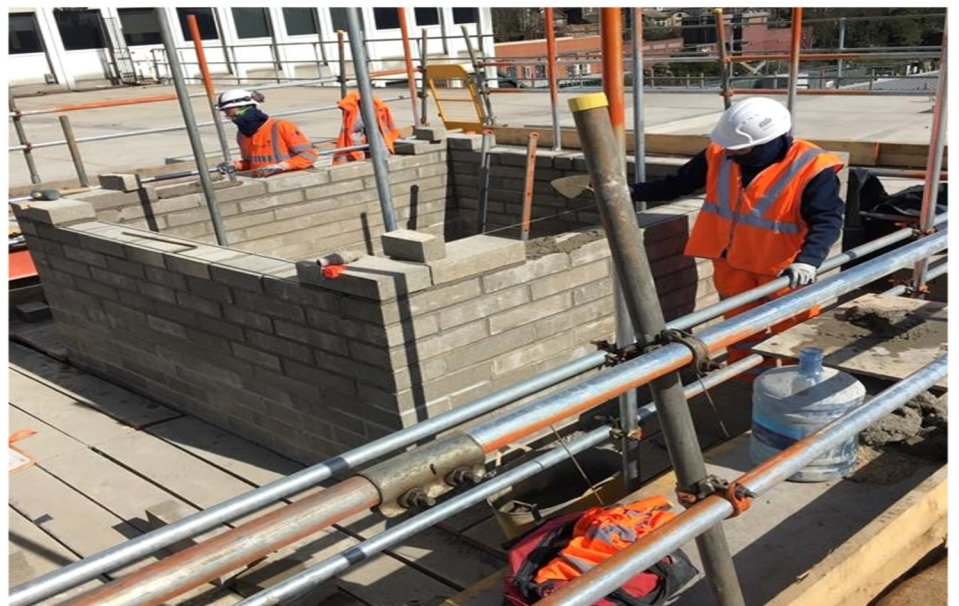
Work to the first phase of the retaining wall and refuse store is also complete. The station building continues to take shape and we have started to prepare for the installation of the glass exterior of the new station building.



Acton Main Line—installing the windowsills to the new footbridge

At **Ealing Broadway** we have continued installing the external cladding on platform 4. We have also made great progress with the cladding to the staircase on platform 1 and have completed the lift shaft.

The station building works are also advancing well with structural works continuing. The first phase of the building's steelworks are mostly finished and the station stairs are complete.



Ealing Broadway—Installing the section of blockwork for the lift shaft on P2/3 that protrudes through the station roof

At **West Ealing** we completed the installation of the canopy columns on platform 4. The retaining wall behind platform 4 has been built ready for platform widening.

The windowsills and roof cladding to the new stairs on platforms 2/3 are now complete. We have finished installing the new station roof and are making good headway with the work to the station floor.



West Ealing—concreting the station floor

At **Southall** we have completed piling works for the new station building and have now begun other foundation works (installing pile caps and ground beams). Cladding to the newly installed footbridge has commenced and we have installed three new temporary rain shelters on platform 4.



Southall - temporary rain shelter



West Drayton— lifting the new footbridge into place

At **West Drayton** we have installed a section of the new footbridge on the north side of the station.

The drainage works in the car park are now complete and an attenuation tank will be installed here at

At **Hayes & Harlington** we have installed a rain canopy at the bottom of the new footbridge on platform 2/3.

The impact wall adjacent to platform 5 is now complete and we have begun preparation works for the installation the new feature wall.

The hoarding on the north side of our work compound has been altered to allow piling to commence for the new station building.



Hayes & Harlington - construction of new feature wall

Contact us:

If you have a concern or to find out more information:

Email us at CRcrossrail@networkrail.co.uk

Call our 24-hour helpline on **03457 11 41 41**

Please click on the below icons for more information:

