



### *An update on the delivery of Crossrail west stations, being upgraded for Elizabeth line services*

Good progress continues to be made across the whole programme and we are preparing for major works over the Christmas period at a number of stations. These works may cause some disruption to travel plans, therefore please check before you travel.

<https://www.nationalrail.co.uk> Please see further information below.



*Ealing Broadway lift shafts and link lobbies*

At **Ealing Broadway** we have successfully installed all planned major steelwork on platform 4, including two supporting structures, four lift shafts and three link lobbies. The new temporary waiting room and platform level PRM (persons with reduced mobility) toilets have opened. We have continued to excavate the lift pit on platform 2/3 and demolish the old retail units to make way for the new station concourse area. We have also commenced cutting out the apertures for the installation of new stairs.



*Ealing Broadway excavation of the lift pit on platform 2/3*



*Acton Main Line preparation for ground beams*

At **West Ealing** we have completed the new station building basement wall and progressed with weatherproofing. We have also started installing the foundations for the main station building. We have commenced with sheet piling on the East embankment and backfill to the retaining wall.



*Weatherproofing the basement walls at West Ealing*



At **Hayes & Harlington** we have completed the base for the lift motor room and lift shaft on platform 1. On the north side of the station, we have moved the ticket machine, hoarding, bike racks and altered the passenger walkway to begin piling for the main station steel structure.

We have made preparations for the demolition of the steps from Station Road to the temporary ticket office and re-routed passengers through to the platforms whilst we construct the new station building.

We have also established a regular weekly collaborative litter picking team for Station Approach between the station's contractor Hochtief and local businesses.

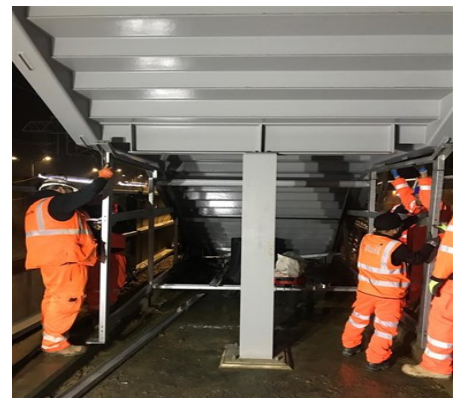


*Hayes & Harlington lift foundations*

At **West Drayton** the sheet piling has been completed. We have completed the break out of hard ground and buried structures. We have undertaken demolition works in the old retail unit in preparation for strengthening the foundations of the existing building.



*West Drayton sheet piling*



*Southall lift motor room steelwork under the stairs*

At **Southall** we have established new site boundary fences to begin enabling works for the modified approach to the north of the new station. We have undertaken survey works at the base of the highway retaining wall and completed trial pits in strategic locations. We have also commenced installation of the steelwork for the new lift motor rooms under the staircases.

The newly finished platform extensions at **Maidenhead, Slough and West Drayton**, have all been opened for passenger service this month, ahead of the December timetable change.



*Maidenhead platform extensions*



*Slough platform extensions*



*West Drayton platform extensions*



Location	WHAT we are doing throughout December (including Christmas)
<b>Acton Main Line</b>	Commencing the installation of the main station building structural steel work and concrete slabs. Installation of roof sheets to previously installed platform 2/3 stairs. Construction of the concrete slab for storage of new station maintenance machinery.
<b>Ealing Broadway</b>	Ongoing demolition of the street level retail units in preparation for the new station concourse. Continuing with the motor room installation for the new double lift on platform 4. Completing the foundations for the new lift on platform 2/3 at the west end of the platform. Erecting the steelwork for the new waiting room, half way down the platform. Pouring the floor slab for the new street level concourse and demolishing the existing stairs to the first floor. Replacement of the floor in the existing concourse area.
<b>West Ealing</b>	Continue waterproofing and backfilling of the foundations and east retaining wall for the new station building on Manor Road. Commencing installation of the main steelwork, which will form the frame for the new station building. Installing roof cladding on platform 2/3 staircase.
<b>Southall</b>	Installing the final footbridge section over the relief lines, which will connect the walkway to the new station building. Re-routing the main water feed to the existing building. Continuing with the installation of the lift motor room to platforms 1, 2 & 3 and installing barriers to the rear of platform 1.
<b>Hayes &amp; Harlington</b>	Continuing with trial holes in the main station building area and breaking out obstructions. Completing reinforced concrete foundations on platform 1 and 4/5 for the new footbridge. Demolishing the existing concrete steps from station road to the temporary ticket office to make space for the new station building. New footbridge steelwork will be installed across all platforms, including the temporary fit out of the new footbridge between platform 2/3 and 4 to bring it into use in the new year. Once the new staircase is open, the existing staircase onto platform 2/3 from the existing station building will be demolished.
<b>West Drayton</b>	Removing the services in the subway canopy in preparation for the canopy demolition. Underpinning the existing wall in the retail unit to strengthen the foundations of the existing building. Excavating the existing ticket hall/subway link and creating a structural slab. Installing a temporary staircase system between the existing ticket hall link and the subway link.
<b>Iver, Langley, Burnham, Slough, Taplow, Maidenhead &amp; Twyford</b>	<p><b>Langley</b> – modifying the platform surface on platform 2.</p> <p><b>Slough</b> - tidying up and resurfacing of the car park adjacent to platform 5 after the removal of the site cabins.</p> <p><b>Maidenhead</b> – continuing with drainage modifications and installing a new ramp to the Shoppenhanger car park and a maintenance walkway.</p> <p><b>Maidenhead Silco Drive</b> – Installing a new secure walking route and lighting for the drivers and cleaning crews of the new Elizabeth line trains that will be using the sidings as part of the timetable change.</p>



Due to station works scheduled at Christmas 19, there may be some disruptions - Please check before you travel.

Location	Station closed	Car Park closed	No train service		Reduced train service	Other information
Acton Main Line	24-27 December closed	n/a	24-27 December		28 - 31 December (until 13:00hrs)	
Ealing Broadway	25-26 December closed 24 and 27 December open only for London Underground	n/a	24-27 December		28 - 31 December (until 13:00hrs)	
West Ealing	24-27 December closed	n/a	24-27 December		28 - 31 December (until 13:00hrs)	
Southall	25-26 December closed 24 and 27 December open but no passenger service	n/a	24-27 December		28 - 31 December (until 13:00hrs)	
Hayes & Harlington	25-26 December closed 24 and 27 December open but no passenger service	South Car Park Closed 20-28 December	24-27 December		28 - 31 December (until 13:00hrs)	* Intermittent restricted access into Station Approach due to large vehicles 24-31 December. Pedestrian access to Staycity unaffected. * Viveash Close northbound parking restriction 19-28 December * Use of the HEX bridge to access platforms 2/3 over Xmas will be required and extra staff have been provided should you require assistance.
West Drayton	25-26 December closed 24 and 27 December open but no passenger service	Car Park Closed 24 December to 6 January	24-27 December		Trains resume 28 December	No access into the station via the subway at Station Approach from 24 December - 6 January. Access to the platforms via Warwick Road only.

## Contact us

If you have a concern or to find out more information:

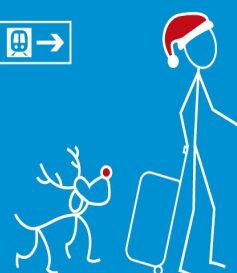
Email us at [CRcrossrail@networkrail.co.uk](mailto:CRcrossrail@networkrail.co.uk)

Call our 24-hour helpline on **03457 11 41 41**

More information can be found at the icons below:



SERVICE CHANGES: 20 DEC – 2 JAN



Getting a train  
over Christmas and  
New Year?


CHECK BEFORE YOU TRAVEL  
[nationalrail.co.uk/Christmas](http://nationalrail.co.uk/Christmas)

Your usual train might be on a different schedule or even not running. We do extra work on the lines over Christmas and New Year to avoid disrupting people when it's busier.

#XmasRailWorks



# Planned Closures



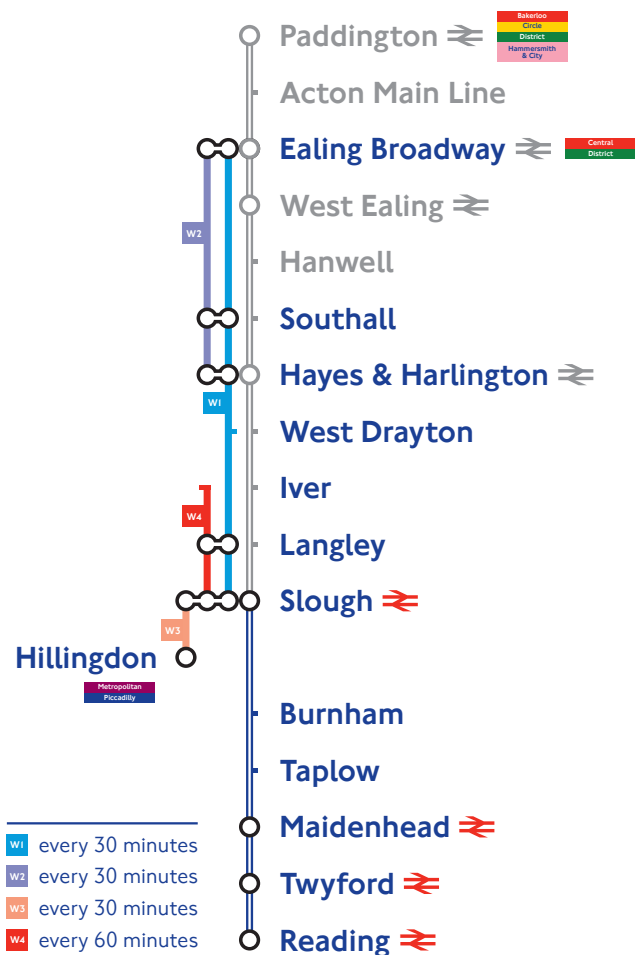
## Tuesday 24 December until Wednesday 1 January

Date	Planned closure
Tuesday 24 December	No TfL Rail or GWR services between Paddington and Slough. Replacement buses will run. No TfL Rail or Heathrow Express services between Paddington and Heathrow T2/3 and 4.
Wednesday 25 & Thursday 26 December	No services running on TfL Rail, GWR or Heathrow Express.
Friday 27 December	No TfL Rail or GWR services between Paddington and Slough. Replacement buses will run. No TfL Rail or Heathrow Express services between Paddington and Heathrow T2/3 and 4.
Saturday 28 to Tuesday 31 December	Reduced TfL Rail service between Paddington and Hayes & Harlington. Trains not stopping at Acton Main Line, West Ealing and Hanwell. Reduced GWR and Heathrow Express services.
Wednesday 1 January	TfL Rail Saturday service. Trains running every 30 minutes between Paddington and Reading and every 30 minutes between Paddington, Hayes & Harlington and Heathrow T4.

To plan an alternative route, visit [National Rail Enquiries](#)

For display at all stations to Reading, apart from Acton Main Line, Hanwell and West Ealing

# Rail replacement bus routes



Allow more time for your journey



Sign up for email updates  
[tfl.gov.uk/emailupdates](https://tfl.gov.uk/emailupdates)



National Rail Enquiries  
[nationalrail.co.uk](https://nationalrail.co.uk)