



An update on the delivery of Crossrail west stations, being upgraded for Elizabeth line services

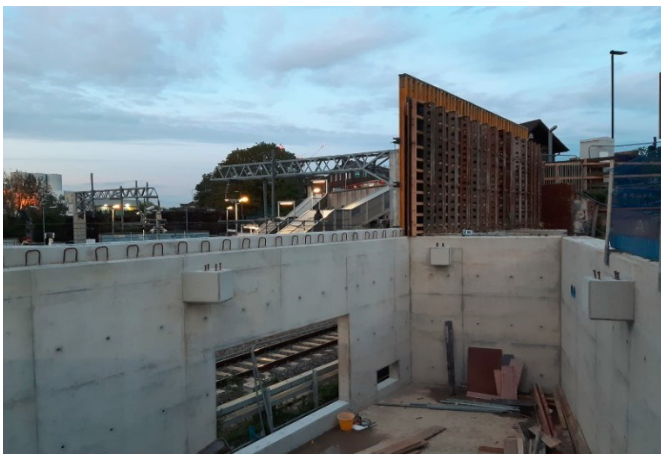
It has been another busy month with a lot of visual changes happening at all the stations as well as lots of work behind the scenes. The stations are progressing well, and we are getting ready for major works over Christmas. Please see upcoming December newsletter for any disruptions over the Christmas period.



Concrete basement walls at West Ealing

At **West Ealing** we have completed the construction of the north, east and northwest basement walls. As well as completing the construction of the lift shaft pit. We have begun waterproofing the north basement wall.

At **Acton Mainline** we have completed the second stage works on the eastern retaining wall, installed drainage, and begun the installation of the ground beams for the main station building.



Acton Main Line basement walls



Demolition of retail units at Ealing Broadway

At **Ealing Broadway** we have completed the piling on the lift pit and started excavations on platform 2/3. We have installed scaffolding for the demolition of the retail units for the new ticket hall. We have installed the link lobby on Platform 1, demolished platform 4 waiting room and completed excavations for the lift pit.



Recording of the new DOO CCTV system



Lift lobby being craned in at Southall

At **Southall** we have installed the lift lobby and staircase on platform 2/3. We've begun the installation of the temporary male toilet block on platform 4, and installed temporary hoardings.

At **Hayes & Harlington** we have modified the hoardings to allow piling for the lift shaft and overbridge. We have also started piling work for the main station building.

At **West Drayton** we have completed the yellow lines on platform 3. The hoarding on platform 2 is nearly complete and we have started breaking out hard ground by hand to facilitate sheet piling for the main station building.

All DOO (Driver Only Operation) CCTV system Testing and Commissioning is now complete at **Iver, Langley, Burnham, Slough, Taplow, Maidenhead & Twyford** in readiness for the Elizabeth Line trains running from 15th December.

At **Slough** all cabling and drainage have also been successfully installed.



Platform 2/3 stairs at Southall



Demolition at West Drayton



Twyford DOO



Pile caps at Hayes & Harlington



Location	WHAT we are doing through November
Acton Main Line	Continuation of station ground beams installation. Construction of machine store. Installation of the main structural steel and precast slabs for the new station building.
Ealing Broadway	Platform 4 preparation works for foundations and installation of 2 supporting structures, 4 lift shafts and 3 link lobbies. Platform 2/3 - install drainage for the new waiting room and continue with the excavation for the lift pit. Continue with the demolition of the station concourse area. Install temporary works support for existing concourse slab and begin to cut out first floor for stairs (end of November).
West Ealing	Complete station basement wall, construction of pad foundations, complete backfill to retaining wall and installation of station building structural steel.
Southall	Hoarding works on the platforms 1 & 2. Enabling and ground preparation works for the main station building.
Hayes & Harlington	Platform 1 lift works including base for lift motor room, support structure and lift shaft installation. Commence platform 1 trial holes. Moving the hoarding and bike racks and altering the passenger walkway to enable piling for the main station steel structure. Diversion of utilities feeding the ticket office.
West Drayton	Continue to break out the hard ground and buried structures by hand to facilitate sheet piling for the main station building. Continue demolition of the retail unit wall in preparation for strengthening the foundations of the existing building.
Iver, Langley, Burnham, Slough, Taplow, Maidenhead & Twyford	Final works for bringing platforms into passenger use. Maidenhead - under track crossing being installed. Langley - preparation works to platform 4 to enable ramp to be altered. Slough - site cabins being removed.

Update From TfL Rail

From 15 December TfL Rail will provide stopping services from Paddington to Reading.

During peak times, services from Reading will run every 15 minutes and two trains an hour will run during off-peak. Some train and departure times will change so please make sure you check before you travel.

Children under 11 and Freedom Pass holders will be able to travel for free.

Oyster won't be valid for travel to stations beyond West Drayton. New fares and contactless will be introduced on 2 January 2020.

This will become part of the new Elizabeth line when it opens through central London in 2021.

If you have a concern or to find out more information: Email us at CRcrossrail@networkrail.co.uk or

Call our 24-hour helpline on **03457 11 41 41**