



### *An update on the delivery of Crossrail west stations, being upgraded for Elizabeth line services*

We have been making excellent progress with the installation of the Driver Only Operated (DOO) CCTV system at a number of stations. This system will continue to be installed and tested throughout August. At **Slough**, we have been continuing with the platform extensions, surfacing works and DOO. At **Maidenhead** we have prepared the ground for the platform extensions to start



*Lighting installed by FCL at West Drayton*

At **West Drayton** we have almost finished construction of the platform extensions, completed installation of temporary lighting and FCL are commissioning the DOO system ahead of programme.



*West Drayton platform extensions*

We have been establishing our sites ready for the main station construction works. At **Acton Main Line** we have erected hoardings and started the construction of the basement for the new ticket hall.

At **Ealing Broadway**, we have completed the temporary remodelling of the waiting room to ease passenger congestion at the bottom of the stairs on Platform 3.

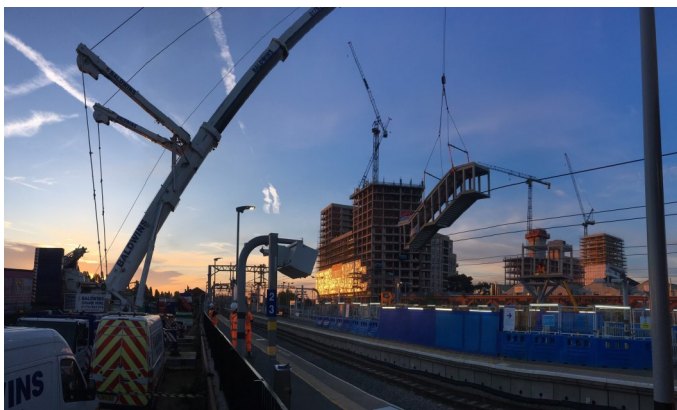


*Waiting room remodelled at Ealing Broadway by GRAHAM*

At **Southall** and **West Ealing** preparation works are ongoing for the foundations for the new buildings.

At **Hayes & Harlington**, preparation works are underway to install a temporary footbridge, whilst we construct the station building.

At **West Drayton** we have completed setting up the site for the new ticket hall.



*Hochtief lifting in the steelwork for the footbridge at Southall*



### Works coming up in August

Location	What are we doing?
Acton Main Line	Constructing the first stage of the east retaining wall and continuing construction of the basement.
Ealing Broadway	Modifying the toilets to enable construction of the lift on Platform 4 (toilets will be closed until the beginning of September) and the internal demolition of the old retail units that are behind the hoardings.
West Ealing	Continuing the excavation works to the basement level of the new station. Carrying out drainage and reinforcement works for the basement slabs.
Southall	Installing the lift shaft section of the footbridge to Platform 1 using a crane sited in the compound behind platform 4. Starting construction of the foundations for the main station building.
Hayes & Harlington	Excavating trial holes for the station building and temporary footbridge.
West Drayton	Finishing the platform extensions including the DOO CCTV system after successfully installing the platform lighting. Excavating trial holes for the lift at the southern entrance of the station.
Iver, Langley, Burnham, Taplow, & Twyford	Continuing with the installation of cabling, the camera equipment and testing of the DOO system.
Slough	Finishing construction of the platform extensions and installation of the DOO system, ready for testing.
M Maidenhead	Continuing with the platform extension works and installing the DOO cabling.



*Elizabeth line train*

TfL Rail is now trialling the longer nine-carriage trains on the western route between Paddington and Hayes & Harlington. Currently, only seven-carriage trains are being used but the nine-carriages will be used when the full Elizabeth line is open. All the new TfL trains have climate-control, walk through carriages, wifi and 4G

## Contact us

If you have a concern or to find out more information:

Email us at [CRcrossrail@networkrail.co.uk](mailto:CRcrossrail@networkrail.co.uk)

Call our 24-hour helpline on **03457 11 41 41**

More information can be found at the icons below:



### Update from Ealing Council

Ealing Borough Council is conducting a consultation on designs for the forecourt and surrounding area of Ealing Broadway station. It runs until **27 Aug 2019**. Details can be found at:

[www.ealing.gov.uk/ebstation](http://www.ealing.gov.uk/ebstation)