

# Dawlish sea wall residents' update

## Work on new Dawlish sea wall continues



The Orange Army continue to work around tide times to access the beach and sea wall

Since the last residents' update, work has picked up pace on the construction of the new sea wall from Colonnade underpass to Boat Cove.

Large machinery is now being delivered by road and sea to help with the works. Some of this equipment is being used for monitoring purposes while others are being used in the initial construction phase of the wall itself, which is due for completion in early 2020.

In the meantime work will continue around the tides with work stopping on July 14 for a summer break. This has been planned so the peak summer tourism season is as unaffected as possible.

Work will then commence on September 9 when the main construction of the new sea wall will begin.

### Ground investigations

Specialist equipment has been used to carry out ground investigations along the sea wall at Marine Parade in Dawlish.

Trial excavation holes were dug in advance of the installation of piezometers to help measure water levels along the sea wall.

'Targets' were also installed along the top and



Ground investigations are being carried out

bottom of the sea wall to allow 3D structural monitoring of the wall during the foundation works.

## Dawlish sea wall residents' update

### Special delivery straight to the beach as machinery arrives



As work starts to gather pace special deliveries of vital machinery have continued to arrive by sea

Over the past two weeks a range of heavy equipment including eight-tonne, 14-tonne and 22-tonne excavators, as well as two 14-tonne dump trucks, have been delivered.

This includes deliveries by sea straight to the beach as this avoids having to try and get the

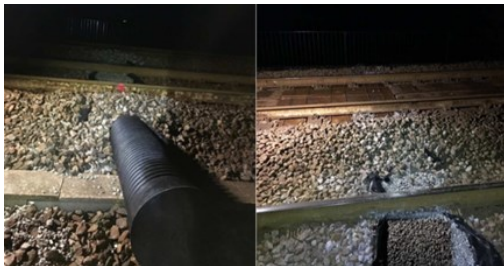
delivery under Colonnade underpass and also avoids causing traffic delays in the town.

In mid June the new machinery has been used to move a lot of beach material from the toe of the sea wall to allow us to get better access during the works

### Pipes under the railway

Recently, two more pipes were installed under the railway in front of Marine Parade, taking the total number to three.

These pipes will be used to pump concrete from Marine Parade to where the new sea wall will be built.



There are now three pipes running underneath the railway

### Trial concrete pour

Eagle-eyed residents will have noticed a large box structure being constructed close to Colonnade underpass.

By filling this structure with marine grade concrete, we can determine its peak curing temperature and understand how it behaves in a mass pour.

Once constructed the box was taken to a compound at Dawlish Warren where the trial took place. This trial section of concrete will provide protection to the sea wall during foundation works if required.



Trials of the concrete are being undertaken

## Have your say on the future of the railway at Holcombe



Have your say on the plans before 15 July

Separate to the work on the new sea wall at Dawlish, Network Rail have been holding consultation events in the local area to discuss plans for the section of railway between Parsons Tunnel, near Holcombe and Teignmouth.

Dawlish residents and businesses are invited to comment on the plans for the 1.8km stretch of railway which is vulnerable because of the cliffs on one side and the sea on the other.

So far, four events have taken place, with one held at Dawlish Town Council Office on 10 June where more than 100 people attended.

## Impact on parking

To enable the work on the sea wall to be carried out safely and efficiently a number of parking spaces are required for the delivery of materials and for access to the work site.

As a result, a section of some car parking bays on Marine Parade will be suspended for the duration of the work.

Parking suspensions are now in effect and will be lifted during the summer break.

Further events will be held in Dawlish, Teignmouth, Holcombe, Exeter, Newton Abbot and Torquay.

The remaining event in Dawlish takes place on Monday 24th June at Dawlish Town Council Office (Mayor's Parlour) from 4pm to 8pm.

For full details on the proposals and to provide feedback online, please visit:

[www.networkrail.co.uk/SouthWestRRP](http://www.networkrail.co.uk/SouthWestRRP)

## Keeping you updated

The community information hub near Colonnade underpass is now open to help keep the public informed of works at Dawlish.

To improve accessibility, the hub will be repositioned over the coming days to a new, long-term position next to the underpass.

Handouts and newsletters carrying latest updates are available to collect from the hub, which also features information boards and the latest visuals.

Network Rail staff will be on hand to answer questions or discuss the project every Tuesday and Thursday from 10am to 2pm.



The community information hub is open on Tuesdays and Thursdays

## Questions?

### How will the new sea wall be built?

A new foundation in front of the existing seawall will be built, to support precast panels which will clad the existing wall.

This will be infilled with concrete between the facing panels and the existing seawall. A new parapet will be installed along the edge of the new seawall (incorporating a recurve) to increase the crest height and reduce the overtopping of waves.

Finally, a new railway boundary upstand wall and fence will be constructed to improve safety of the public near to the railway line.

Ramps will connect the new raised promenade to the existing walkway levels at Colonnade underbridge and Boat Cove and enhanced public amenities will be provided in the form of coloured and textured concrete surfacing, benches, lighting and signs.

### What implications will there be for walkers along the sea wall?

Until 14 July, when phase one of the work is finished, public access to Boat Cove will be maintained via the footbridge over the railway line, with a segregated pedestrian walkway installed from the footbridge through Boat Cove to Coryton Cove.

This walkway and access to the public toilets will be maintained throughout the work and Boat Cove will be staffed at times by a pedestrian marshal to ensure public safety.

### During the summer break will the paths and beach reopen as normal?

It is our intention to re-open both the footpath and beach to the public. All items of plant will be removed, however there will be some fencing in place at Boat Cove and there will still be a contractor presence maintaining this fencing.

During the break period between Sunday 14 July and Monday 9 September the beach will be accessible from Boat Cove.

### How can we get in touch with you?

If you have any questions or comments regarding the new sea wall at Dawlish or the South West Rail Resilience Programme's work between Dawlish and Teignmouth, do please visit the Community Information Hub located on Marine Parade between 10am and 2pm on Tuesdays and Thursdays.

Alternatively, please call our dedicated 24-hour National Helpline on: 03457 11 41 41 or email [SouthWestRRP@networkrail.co.uk](mailto:SouthWestRRP@networkrail.co.uk)

For updates follow the South West Rail Resilience Programme's social media pages: Facebook - @SouthWestRRP or Twitter - @SouthWestRRP

For more information visit:

[networkrail.co.uk/SouthWestRRP](http://networkrail.co.uk/SouthWestRRP)