



An update on the delivery of Crossrail west stations, being upgraded for Elizabeth line services

We are continuing to upgrade the main line stations in your area, bringing passengers the benefit of enhanced accessibility with lifts and footbridges that will bring step-free access to all platforms and to enable the full introduction of the new Elizabeth line trains (Class 345s) and the GWR Electrostar trains (Class 387s).



West Drayton platform extensions—final touches



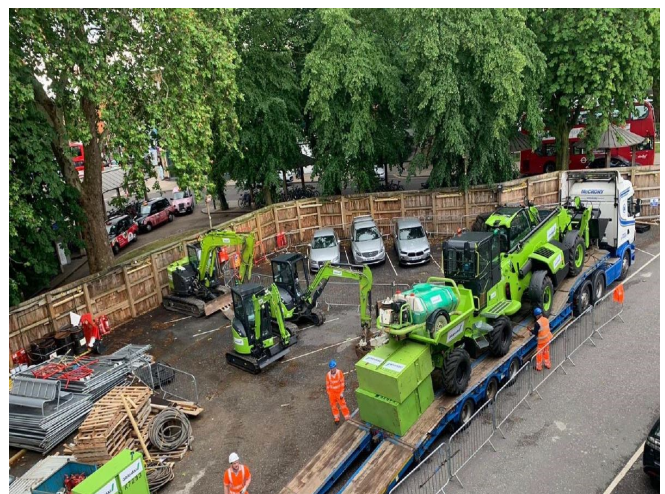
Post installed at Langley ready to install DOO Camera

These essential works include:

- ◆ New lifts and footbridges, to ensure step-free access to all platforms serving the Elizabeth line.
- ◆ New, bright, spacious ticket halls at a number of stations.
- ◆ Platform extensions to accommodate the 205m long Elizabeth line train.
- ◆ Driver Only Operation (DOO) cameras at all stations, where required.

Network Rail are also working with Crossrail Ltd and local councils to integrate plans for improvements to the areas around the stations. We aim to keep all stations open throughout the works which are expected to complete by the end of 2020.

These works may bring some disruption, but we are working closely with the Councils and the Train Operators to minimise impacts.



Contractor GRAHAM set up site at Ealing Broadway

This periodic newsletter aims to keep you up to date with news of our works, what is coming up and where, to keep you informed along the way.



Works coming up in July

Location	What are we doing?
Acton Main Line	Site set up and survey verification. Platform 4 hoarding installation. Construction of the basement for the new ticket hall
Ealing Broadway	Commence remodelling works on Platform 2/3
West Ealing	Site surveys and set up. Service locations and diversions, hoarding installation. Preparation works for excavation of basement. Surveys at Warwick Road entrance.
Southall	Installing the lift shaft section of the footbridge to Platform 0/1 using a crane sited in the compound behind platform 4.
Hayes & Harlington	Site establishment. Drainage and asbestos surveys being carried out.
West Drayton	Platform extensions almost complete. Site establishment for ticket halls. Drainage and asbestos surveys being carried out.
Iver	Installation of ducts for cables and temporary lighting for Driver Only Operated CCTV system. Installation of lighting outside the waiting shelter.
Langley	Cable ducting now complete. Install cables and brackets for Driver Only Operated CCTV system.
Slough	Platform 2 and 5 extension works, lighting and surfacing. Platform 3/4 Installation of cabling routes.
Burnham	Platform 1/2 Cable ducting being completed.
Taplow	Completion of cable ducting and installation of temporary lighting on Platform 3 /4. Grouting camera structures.
Maidenhead	Removal of the ramp to Shoppenhanger Car Park - Ramp access will be closed until October 2019 - Please speak to GWR if you will require assistance.
Twyford	Installing platform ducts for cables and camera bases for Driver Only Operated CCTV system

Contact us

If you have a concern or to find out more information:

Email us at CRcrossrail@networkrail.co.uk

Call our 24-hour helpline on **03457 11 41 41**

More information can be found at the icons below:



Contractor Hochtief set up site at Hayes & Harlington