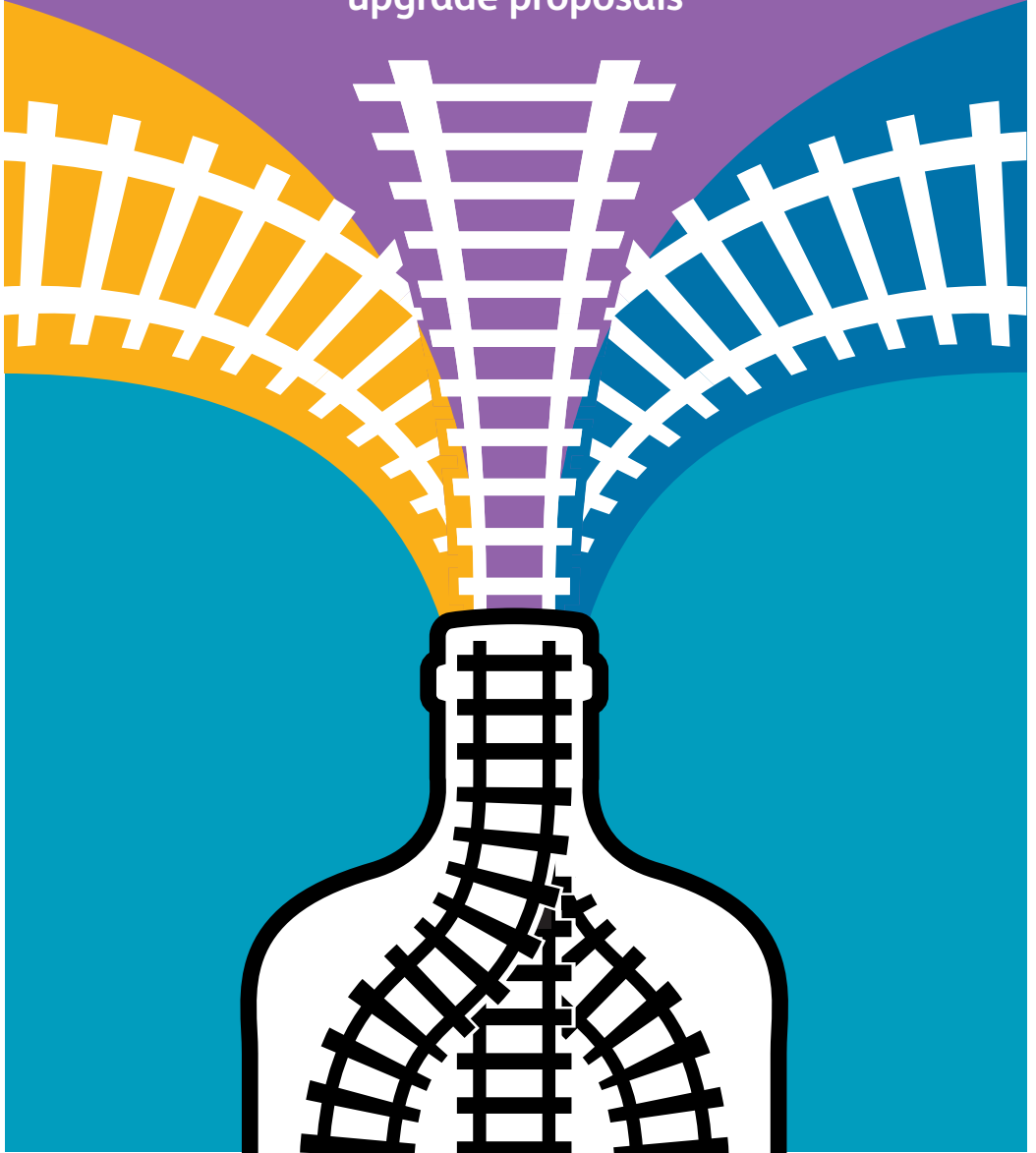


Unblocking the Croydon bottleneck

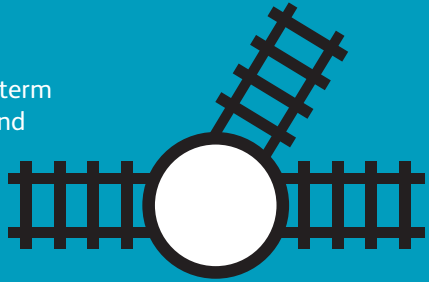
Norwood Junction station
upgrade proposals



Background

Network Rail is proposing to upgrade Norwood Junction station to provide more frequent and reliable services, as well as a modern, accessible station fit for the 21st Century.

The proposals are part of Network Rail's long-term strategy to upgrade the Brighton Main Line and unblock the Croydon bottleneck.



Our upgrade proposal

Modify the existing track and platform layouts

- Provide a track layout that allows more trains to run through and stop at the station.
- Reconfigure the platforms to provide dedicated island platforms for northbound and southbound services.
- Provide dedicated tracks away from the platforms, for fast non-stopping trains.

Lengthen and widen platforms

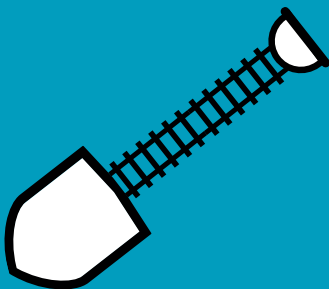
- Lengthen platforms to allow full length (12-car) trains to stop and open all their doors at the station.
- Widen all platforms to provide more space for passengers.

Provide step-free access

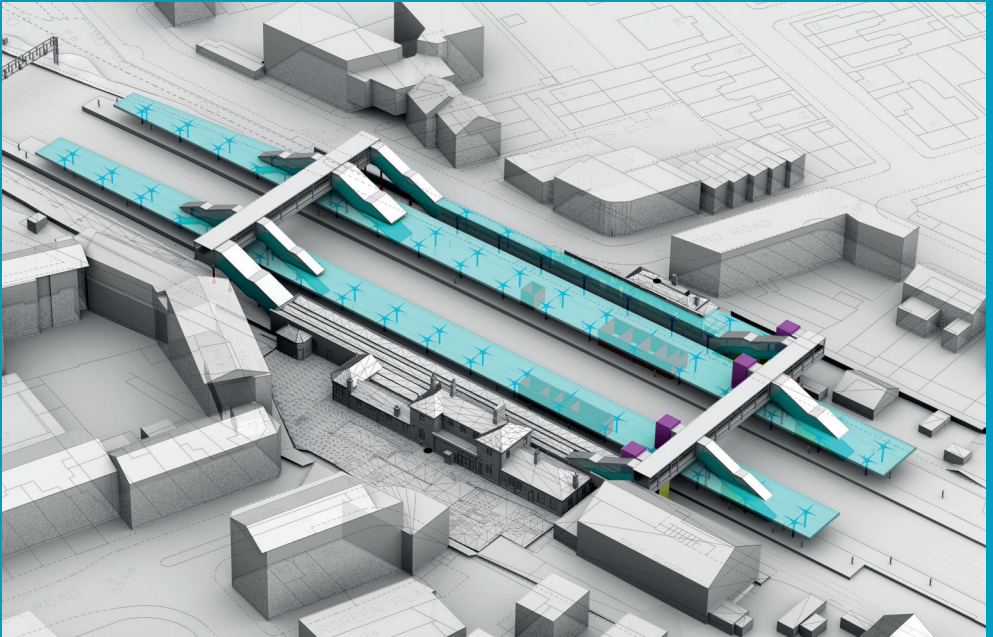
- Provide two new footbridges, one with lifts to provide step-free access to all platforms.

Upgrade the signalling

- Upgrade the signalling system to give our signallers the ability to recover the service more quickly when delays occur.



Indicative concept



Indicative aerial view of the proposed Norwood Junction station

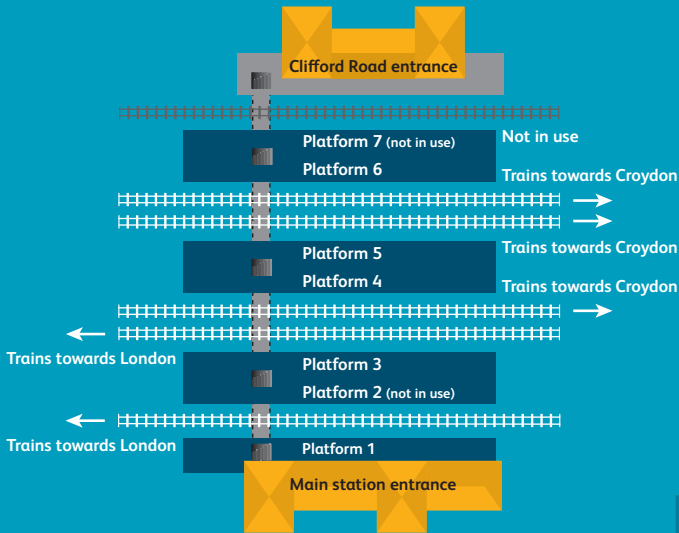
To make the station accessible and safer for all passengers we would remove the subway which currently allows access to platforms. Two new footbridges would be built, at the south and north ends of the station. The bridge at the south end would have lifts, providing step-free access to all platforms from Station Road and Clifford Road.

The public subway (outside of the station) linking both sides of the station would be unaffected by the proposal.

Trains would no longer stop at existing platform 1, but this area will be used to help improve passenger circulation within the station. The proposed island platforms would be accessed via the new footbridges.



Existing Layout



The proposed platform layout would provide a dedicated island platform for northbound services, towards London, and a dedicated island platform for southbound services, towards Croydon.

Proposed Layout

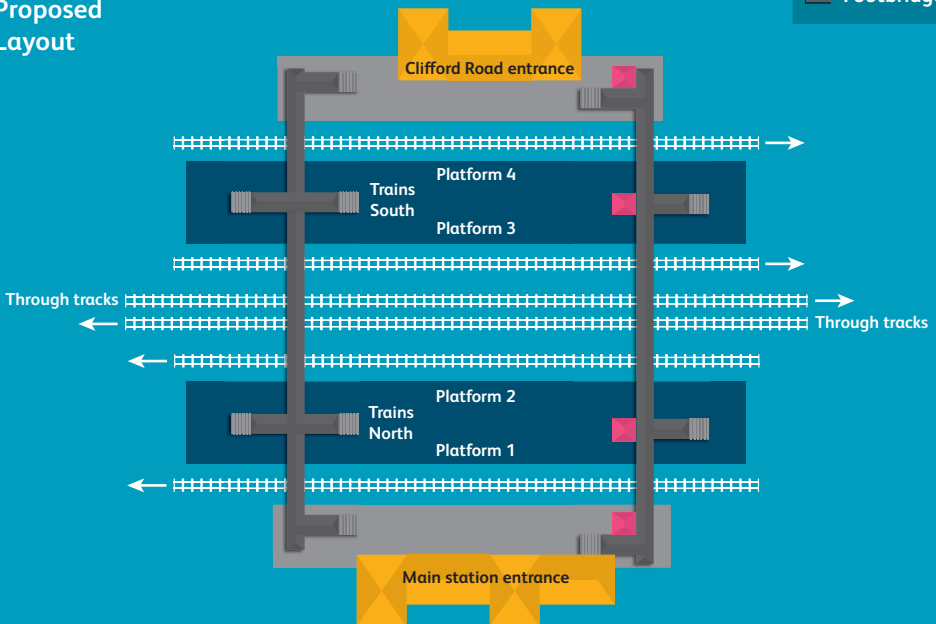


Diagram for indicative purposes only.

The layout would allow passengers to quickly and safely interchange between fast and suburban stopping services.

The benefits

Our proposals for Norwood Junction station would deliver regional and local benefits.

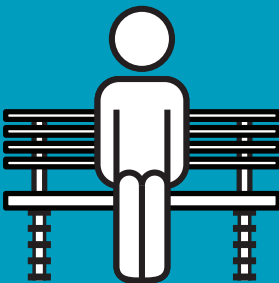
More frequent and more reliable services

While the proposals form a key part of our wider plans to unblock the Croydon bottleneck, they would also have benefits as a standalone project, helping to improve reliability and run more frequent services.



Increased station capacity

Widening and lengthening the platforms would provide more space for passengers to wait and get on and off train services. Providing two footbridges would reduce congestion and allow passengers to move more freely through the station.



Accessibility

Step-free access to all platforms would make the station accessible to all passengers, including those with buggies or luggage, the elderly and those with reduced mobility.



Keeping people on the move

We would look to start these works before other works for our wider proposals to unblock the Croydon bottleneck and upgrade the Brighton Main Line. Upgrading Norwood Junction station first would provide the ability to move more trains and people while we work at other locations on our wider proposals. Delivering step-free access earlier would also provide significant benefits for local station users.

Managing impacts

We would work with train operators to run as full a service as possible through Norwood Junction station during the proposed upgrade. We propose to retain four platforms throughout construction and install the new footbridges first, to provide improvements for passengers as quickly as possible.

As we develop the detail of our proposals we will continue to engage with residents, businesses and passengers to make them aware of our proposals and the potential benefits.

We propose to start and finish works in the early 2020s.

Next steps

Our current proposals for the station are likely to be constructed entirely within the railway boundary and we would look to seek consent for these through the usual planning process. Currently these works are not proposed to form part of our Transport and Works Act Order application for our other proposed upgrade works between East Croydon station and the “Selhurst triangle” which we have been consulting on. Further consultation on these proposals will take place in 2020.

The proposals for Norwood Junction station are currently unfunded, as are the wider proposals to upgrade the Brighton Main Line. Over the months and years ahead we will continue to make the case for investment in the Brighton Main Line railway.

You can share your views on the Norwood Junction upgrade by sending in our freepost form, or filling in our online survey. Comments can be shared from 17 June – 26 July.

To find out more visit:

networkrail.co.uk/NorwoodJunction

or by emailing

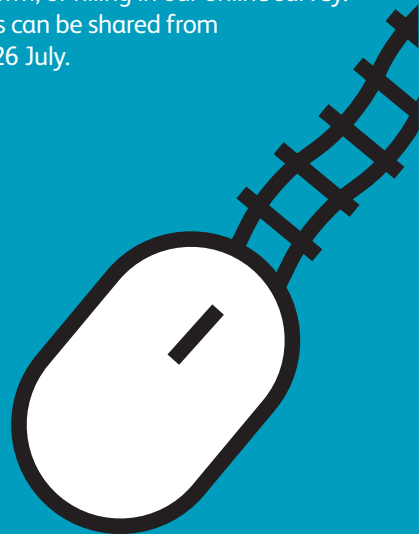
consultation@cars2.networkrail.co.uk

For further information you can also call Network Rail's National Helpline on

03457 11 41 41

or follow us

@NetworkRailSE



Fill out the form below, fold in half and glue together, then send back to us using Freepost.

1) Do you agree with Network Rail's plans to improve Norwood Junction station?

Strongly Agree

Agree

Undecided

Disagree

Strongly Disagree

2) Do you have any comments on the proposals?

Network Rail will consider all feedback submitted and confirm your personal data is not required unless you are content for Network Rail to be able to identify you as the source and the location of the feedback provided.

Any feedback provided will be collected and held solely by Network Rail in accordance with the requirements of the General Data Protection Regulations. It will be used by Network Rail solely for purposes and duration in connection with the development of the design and securing any consent application, including publication of the final consultation report, as may be required, for the Croydon Area Remodelling Scheme.

If you wish to be contacted by Network Rail with further information or to discuss the feedback you have provided on the Croydon Area Remodelling Scheme then please tick here:

Please confirm by providing your details in the space provided below:-

NAME

ADDRESS

POSTCODE

EMAIL

For further information on how Network Rail holds and uses personal data please refer to the Croydon Area Remodelling Scheme Privacy notice at networkrail.co.uk/Croydon

Business Reply Plus
Licence Number
RTLZ-LUJH-KXHU



2
||| |||



Network Rail Ltd
167-169 Westbourne Terrace
LONDON
W2 6JX

Croydon Area Remodelling Scheme (CARS)