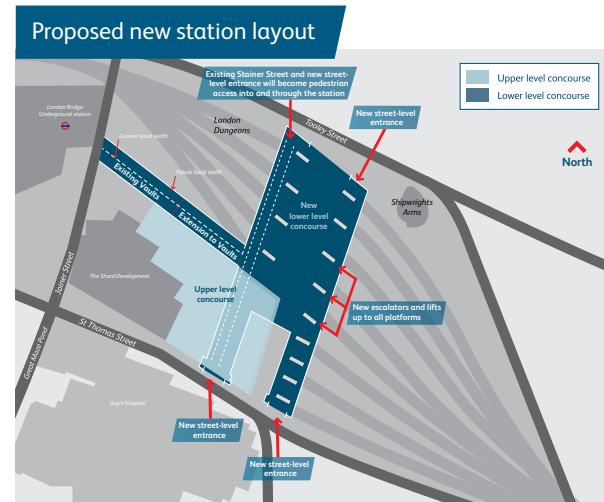


## More trains, more destinations and a better station

Our plans will increase capacity, and use the station in a totally different way. When the £6 billion programme to upgrade the Thameslink network is complete, more trains will travel to and through London Bridge, rather than starting or finishing their journeys here.

The brand new, state-of-the-art station will offer more space and better connections – north to St Pancras, Luton, Bedford, Peterborough, and Cambridge; east to Ashford and Sevenoaks; or south to Gatwick and Brighton.

It will also make onward journeys easier – by tube, bus, bike, or on foot.

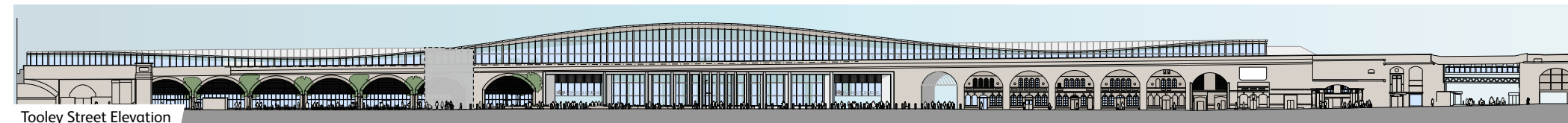


## Our proposals

- We'll increase passenger capacity by around two thirds and increase the number of tracks through the station, increasing rail capacity
- Next to the new Shard landmark, the new station concourse will be 70m x 150m – bigger than the pitch at Wembley
- The London Bridge Quarter development has funded a new bus station and delivered a new rail concourse, which are currently being built; our plans expand on these improvements
- New entrances on Tooley Street and St Thomas Street will improve integration with local bike, foot, or bus transport routes
- Lifts and escalators will offer passengers step-free access to every platform
- New shops, restaurants, and other facilities will complement the ongoing regeneration of the local area



All images shown are artist's impressions



## What you said

More than **2,500** people visited our stands between 17-21 May 2011 and there were more than **4,000** visits to our website.

**97%** agreed that London Bridge is in need of investment (85% strongly agreed, 12% Agreed)

**94%** agreed that an improved station will benefit passengers and the local area (77% and 17%)

**93%** supported our plans for making the station bigger and easing congestion (77% and 16%)

**Thank you for your support.**

## Thameslink Programme

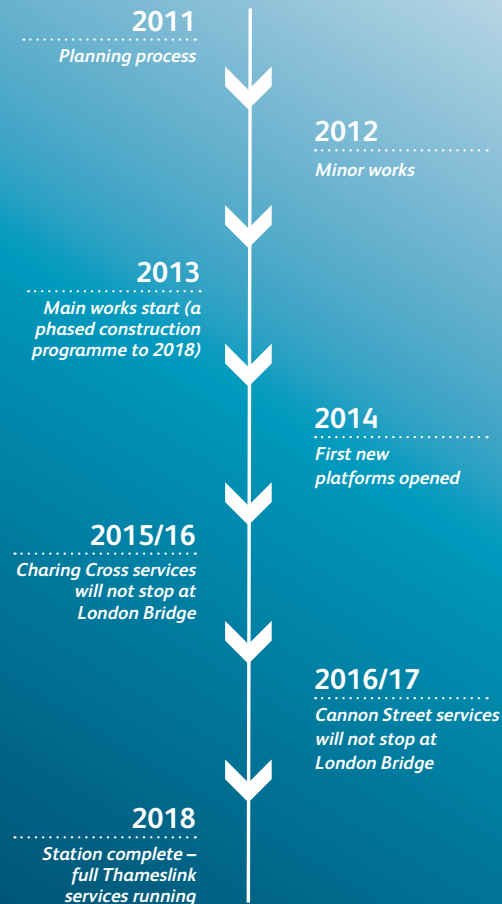
Our plans for London Bridge are the final piece in the jigsaw for Thameslink. We've made excellent progress elsewhere along the route to enable 24 trains per hour to carry passengers through central London when we're finished in 2018.

By December, the first longer trains will run, while in mid 2012 we'll be unveiling completely redeveloped stations at Farringdon and Blackfriars.

## What happens next

We submitted our planning application to the London Borough of Southwark in June 2011. Over the coming months we will start doing minor works, such as investigating ground conditions and moving utilities cables. This will help us to plan the final construction programme, which we hope to start in 2013.

### Timeline of activity



Indicative timings only



## Better access, more space

To increase capacity at the station and improve journeys for everyone who uses it, we're planning to transform London Bridge – creating a spacious new concourse offering step-free access to all platforms.

When the work is complete, the station will be better connected and less crowded; and, alongside local developments like the Shard, it will help regenerate the whole area.

### Helping London run better



## London Bridge redevelopment

We've got exciting plans to transform London Bridge – the capital's oldest rail terminus, and now one of Britain's busiest stations.

For more information on our proposals, speak to one of the team, visit [networkrail.co.uk/thameslink](http://networkrail.co.uk/thameslink) or email [thameslink@networkrail.co.uk](mailto:thameslink@networkrail.co.uk)