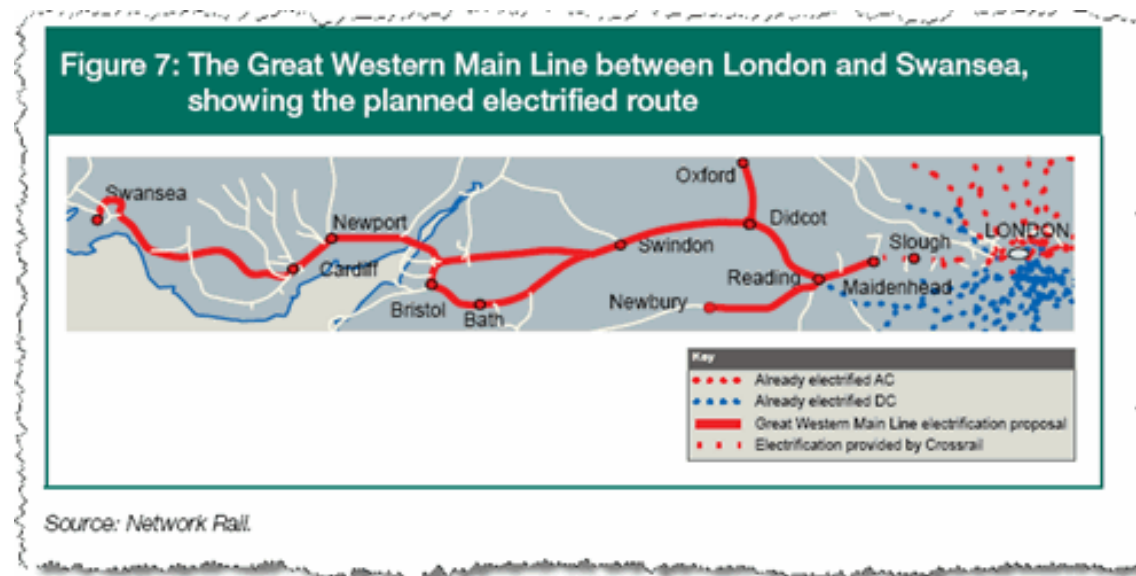




Balfour Beatty

Visual Options Workshop – Brief

- Great Western Electrification Project passes from London to Reading, Bristol, Cardiff & Swansea.



- It passes through a number of Areas of Outstanding Natural Beauty (AONB).

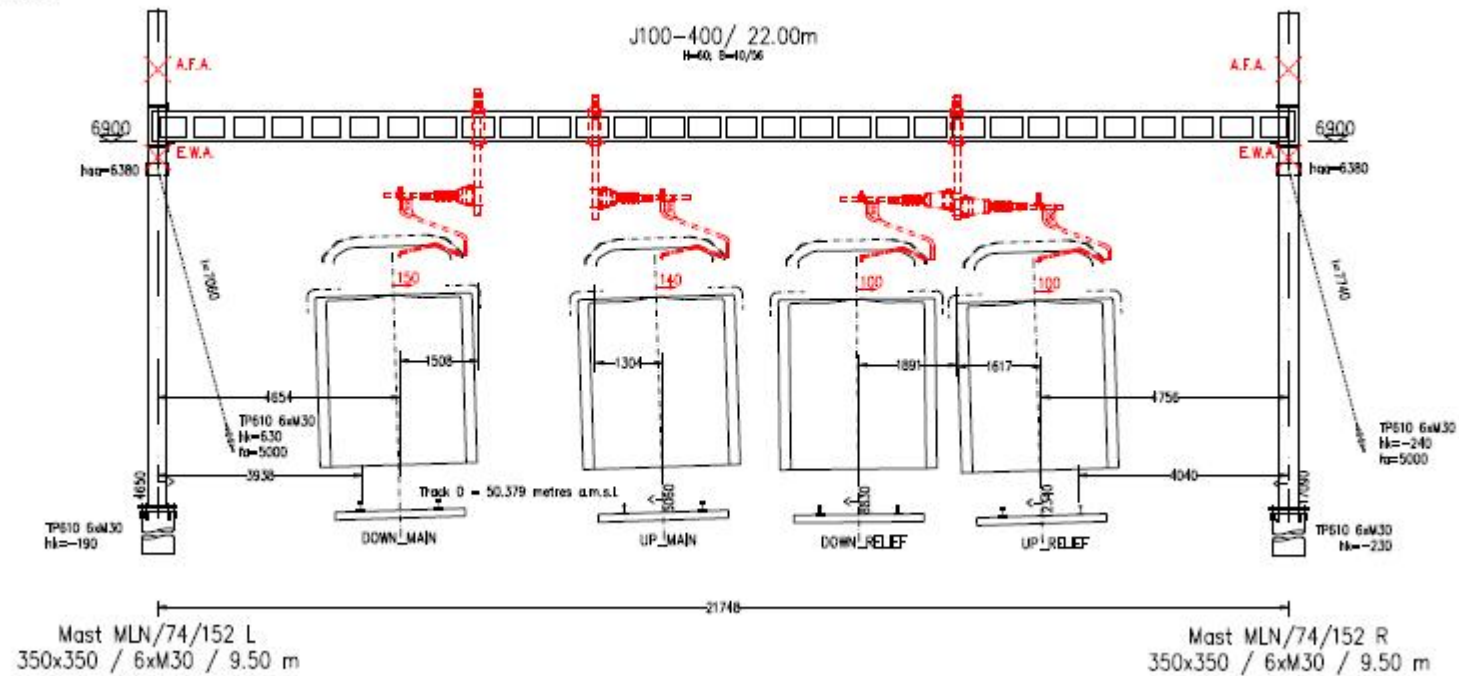
Visual Options Workshop – Brief

- Construction has started
- Series 1 (Furrer + Frey) OLE is being installed
- AONB Boards raised issues with Network Rail regarding timing & consultation
- Action group (Save the Goring Gap)
- Concerns raised - visual impact of the OLE in sensitive areas.
- BBRL commissioned to identify and assess options to improve the visual amenity at 3 locations
- The aim of the workshop during this initial phase is:
 - Day 1 – generate ideas
 - Day 2 – start filtering and assessing the ideas

Visual Options Workshop – Series 1

MLN/74/152

NOTE
1. AF & EW LEVELS GIVEN
TO CENTRE OF NEAR TRACK



Options Workshop – Brief

- Identified sensitive areas:
- Section passing through Chilterns AONB & North Wessex AONB:
 - Tilehurst to Moreton Cutting including listed structures (4 track):
 - Gatehampton Viaduct
 - Moulsoford Viaduct
- Sections passing through Cotswold AONB:
 - Alderton Tunnel to Chipping Sodbury Tunnel (2 track)
 - Box Tunnel to Batheaston (2 track)
- AONB Requirements/ Network Rail Commitment

Options Workshop



- Example - Goring Gap – South Stoke – In Progress

Options Workshop



- Example - Goring Gap – Lower Basildon

Options Workshop



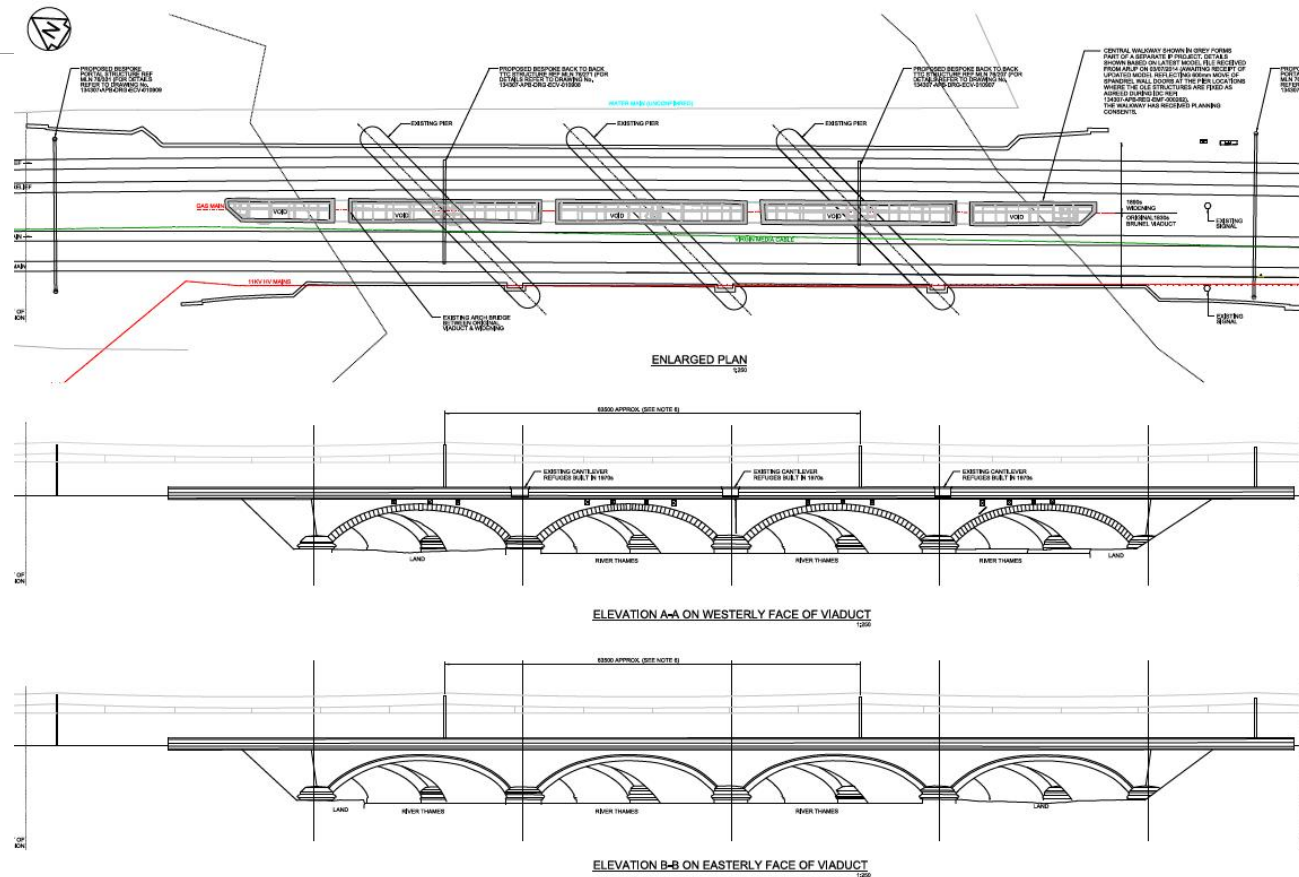
- Examples of equipment being installed



Options Workshop

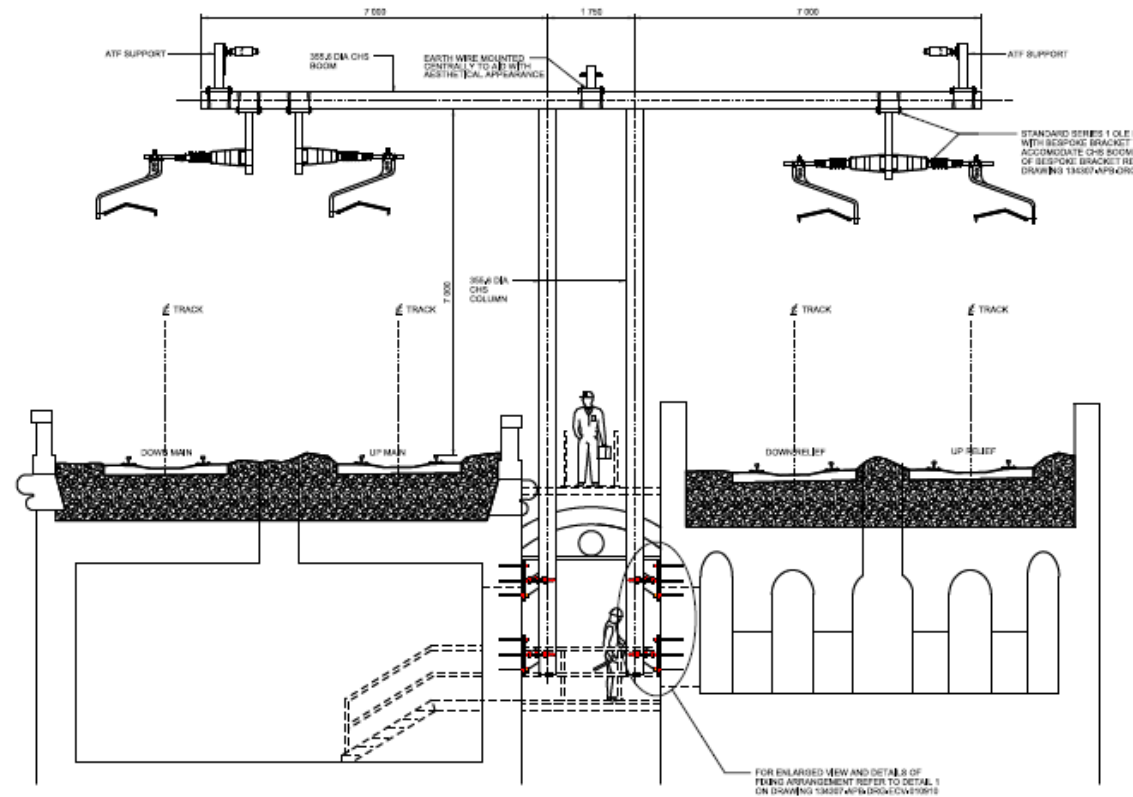


- Commencement of construction adjacent listed viaduct



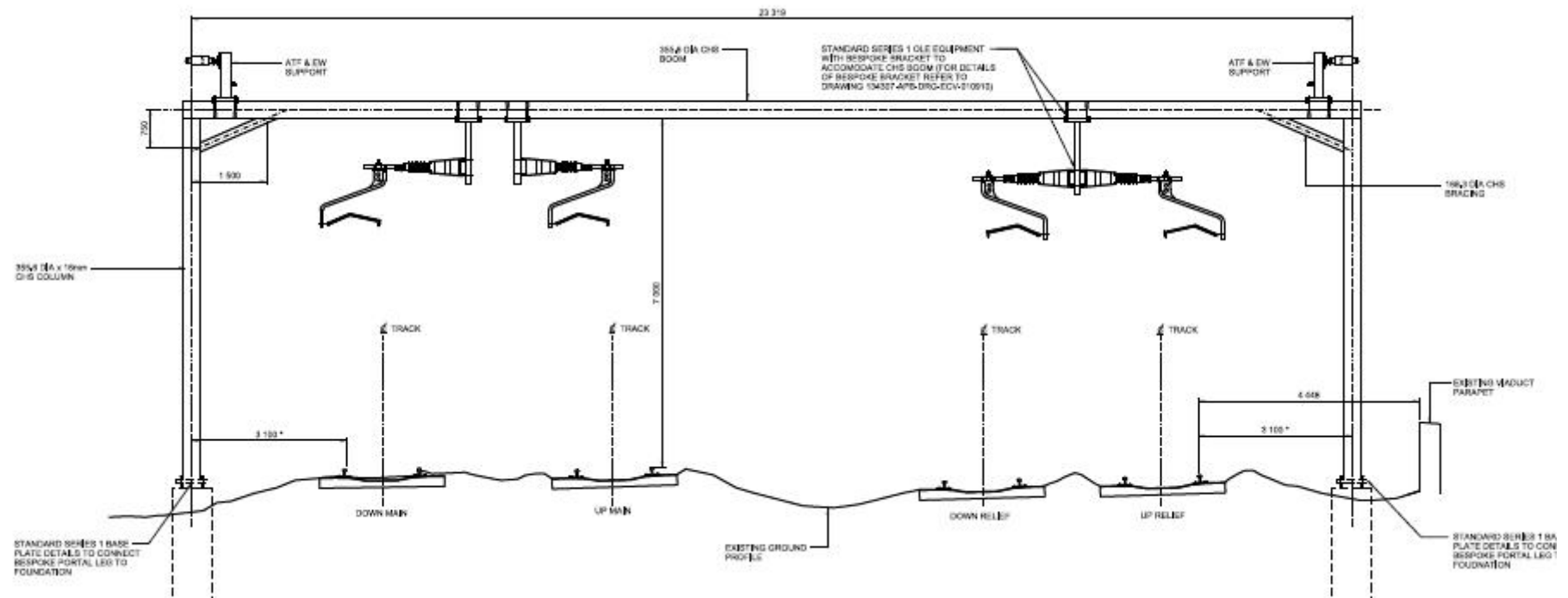
- Bespoke structures – Moultsford Viaduct

Options Workshop - Viaducts



- Bespoke structures – Moultsford Viaduct

Options Workshop - Viaducts



- Bespoke structures – Moultsford Viaduct

Options Workshop



- Box Tunnel to Batheaston

Options Workshop



- Alderton Tunnel to Chipping Sodbury Tunnel

Options development overview

- Review and Selection of Options in 3 Phases
- Phase 1 – workshop and ideas generation (today) and assessment (tomorrow) – aim to get to single number of options
- Phase 2 - Further refinement – predominantly development of visuals and technical review – aim to get to 2 or 3 options.
- Phase 3:
 - Further development of visuals (set in context of landscape)
 - Assessment of impact on Whole Life Cost
 - Delivery programme, staging etc
 - Aim to get to recommendation of single option

Options Workshop – Attendees/Introductions

- Balfour Beatty:
 - Neil Andrew
 - Keith Warburton
 - Richard Charles
 - Charles Penny
 - David Thompson
 - Dermot Kelly
 - David Matthewman
 - Andy Clayton
 - Steven Moors
 - Farhad Janani
 - Mark Walker

Options Workshop – Attendees/Introductions

- External:
 - Tom Osbourne, Knight Architects
 - Bill Blackledge, 2B Landscape
 - Amanda McDermott, 2B Landscape
 - Fraser Brown, Dynamic Concepts
 - William Neilson, Dynamic Concepts

- Network Rail:
 - *Nia Griffiths*
 - *Matthew Lupton*
 - *Mike Thomas*
 - *Emmanuel Abaya*
 - *Louis Marshall*
 - *Mike Foss*

Options Workshop – Working Groups

Neil Andrew
Steven Moors
David Thompson
Amanda McDermott
Mike Foss

Keith Warburton
Charles Penny
David Matthewman
Tom Osbourne
Matthew Lupton

Andy Clayton
Bill Blackledge
Nia Griffiths
Louis Marshall
William Neilson

Farhad Janani
Richard Charles
Dermot Kelly
Mike Thomas
Emmanuel Abaya
Fraser Brown