
Network Rail

Structure of charges - Appendices

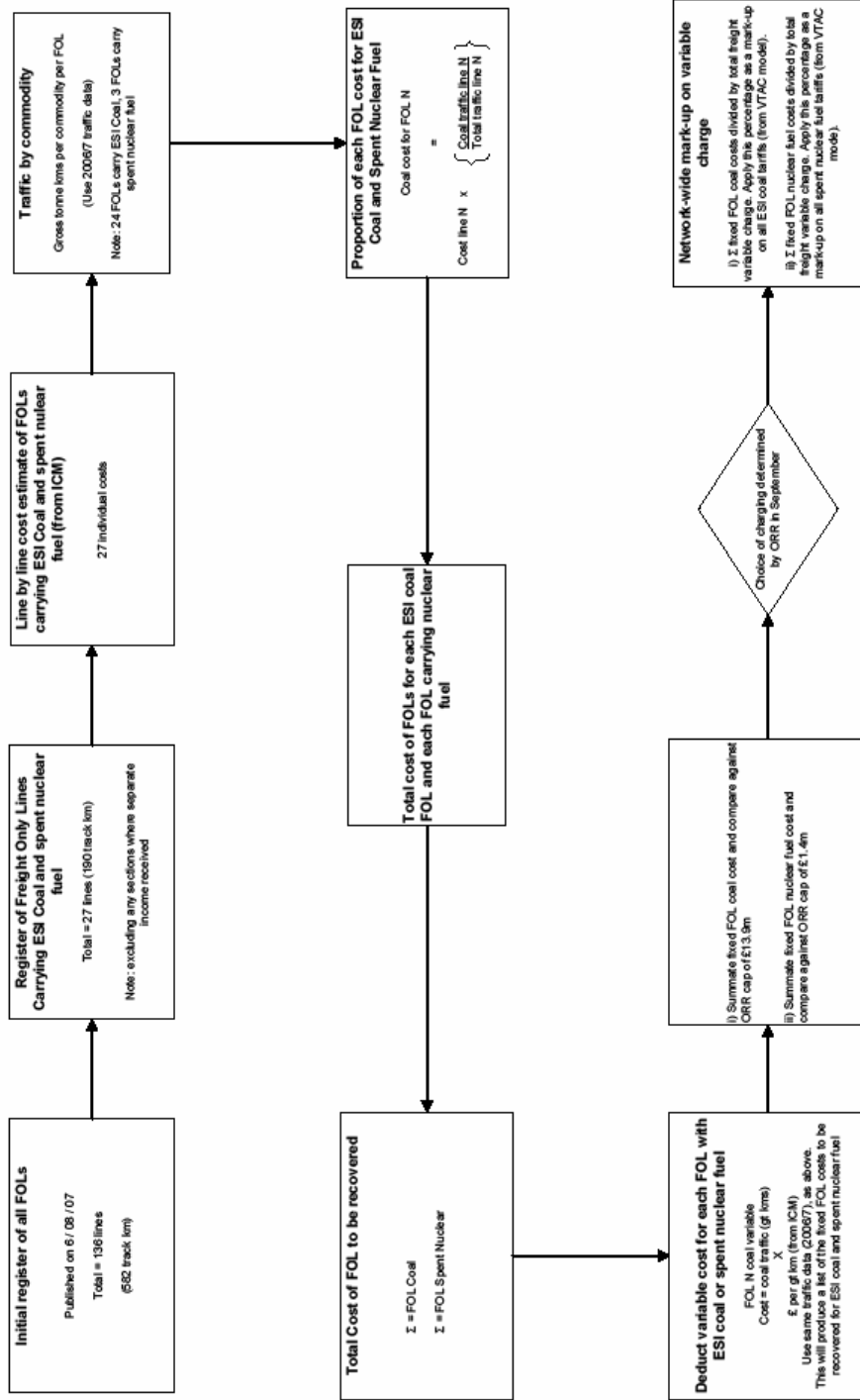
Document number NR/SBP/OCT07/EX03

Appendices

1. Flowcharts showing approach to charging
2. Usage Tariffs
3. Capacity Charge Rates
4. Electricity for Traction Tariffs

Appendix 1

New Freight-Only Line Charge (ESI Coal and Spent Nuclear Fuel)



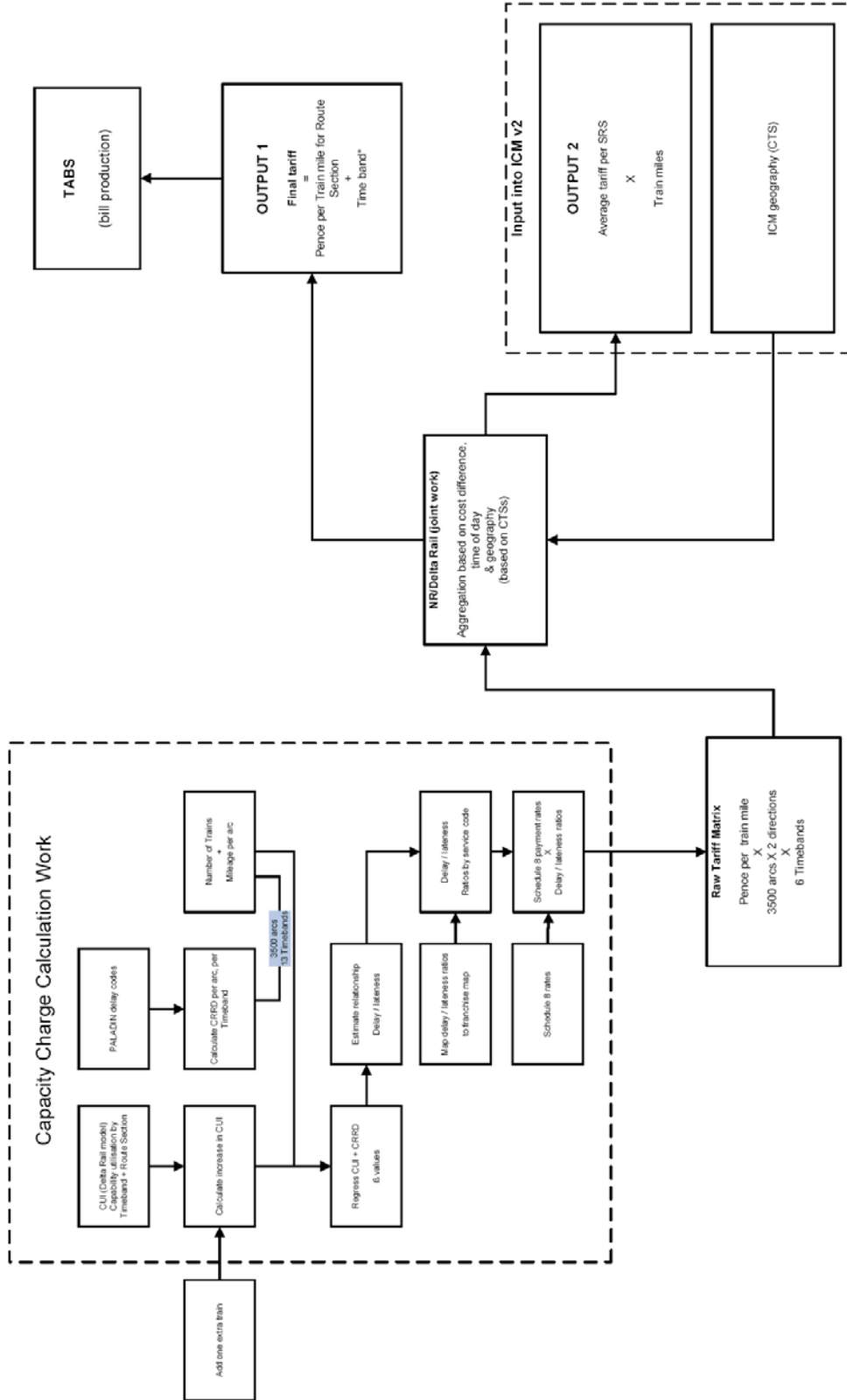
Capacity Charge

Capacity Charge Total = $\Sigma = (Pijrt \times Ukjirt)$

Pijrt = tariff for service i, timeband j, over route section r, in relevant year t
 Ukjirt = train miles for service i, timeband j, over route section r, in relevant year t.

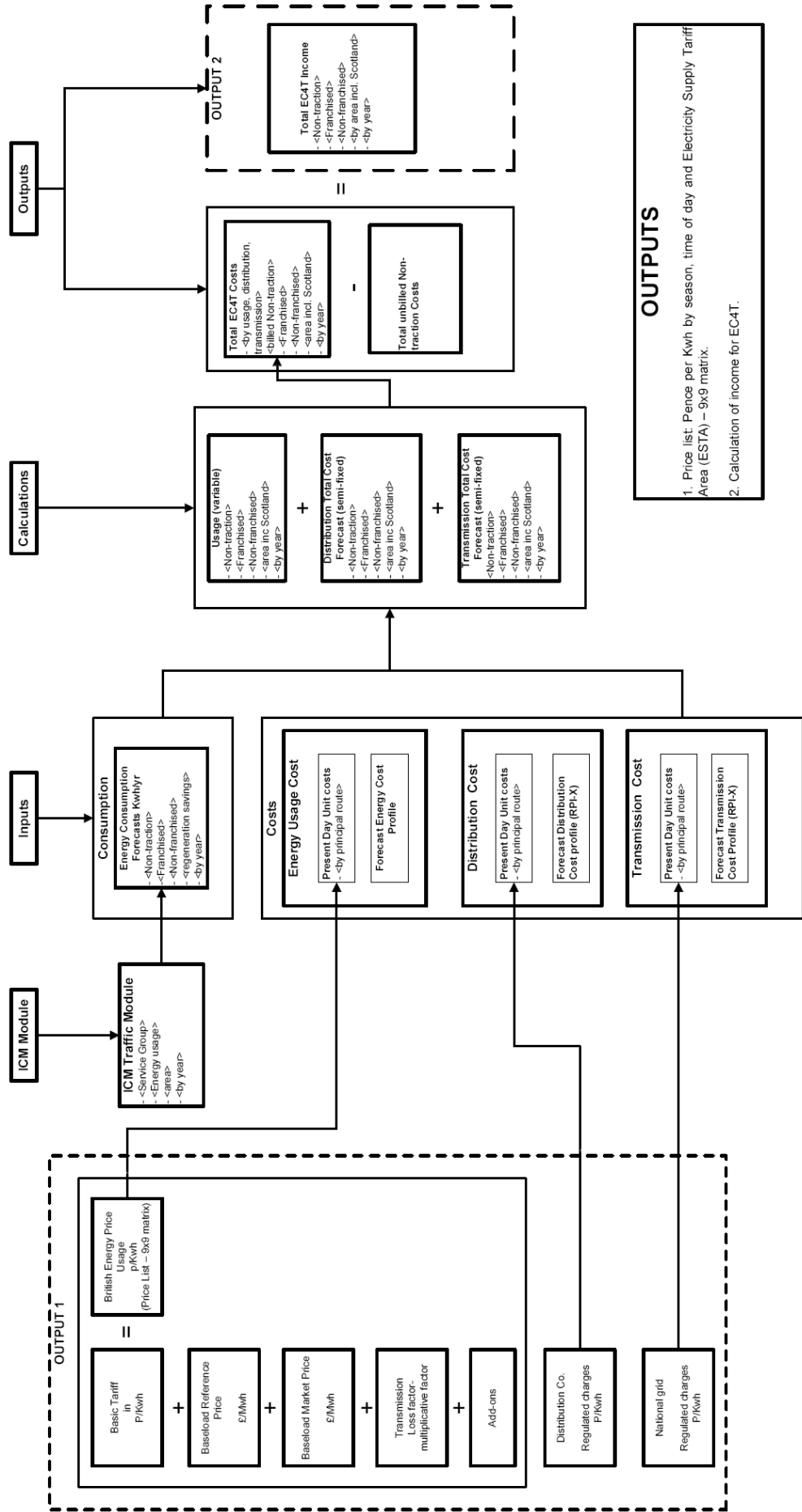
OUTPUTS

1. Pence per train mile / route section x timeband
2. Calculation of capacity charge income

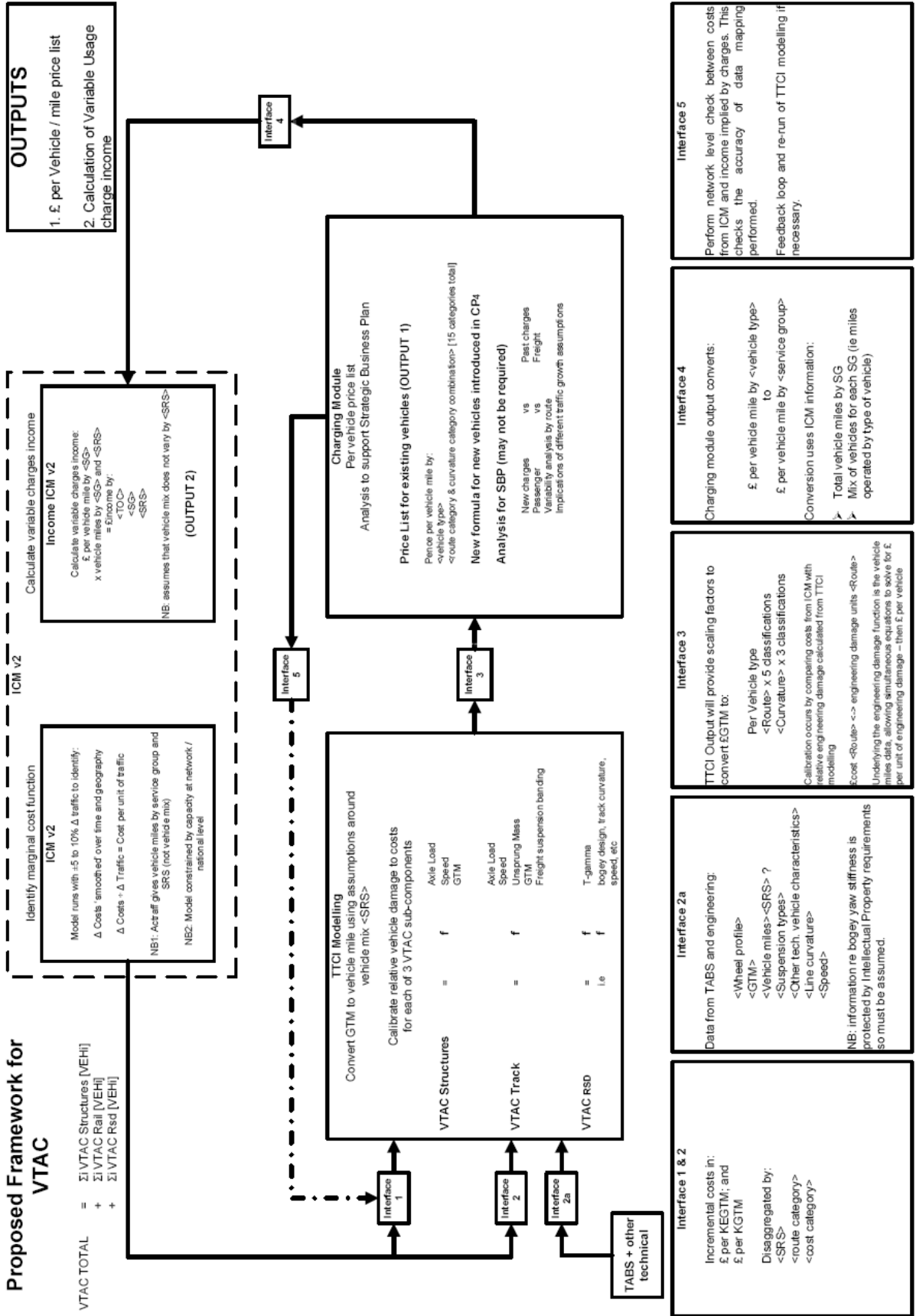


* Number of timebands for the final tariff to be determined!

EC4T



Variable Track Access Charge



Appendix 2 Variable Track Access Usage Tariffs

See separate spreadsheets showing vehicle usage tariffs

Appendix 3 Capacity Charge Rates

The table below shows the Capacity Charge Rates in pounds per train mile for each of the following timebands.

- Tariff C = Weekday 06:30-09:30
- Tariff D = Weekday 09:30 -16:30
- Tariff E = Weekday 16:30-19:30
- Tariff N = Weekday 00:00 -06:30 & 19:30 – 24:00
- Tariff J = Saturday 08:00 -18:00
- Tariff M = Sunday 09:00- 24:00

'Whichway' denotes direction, with 1 indicating the same direction as the name and 2 the opposite direction to the name.

Table 3 Capacity Charge Tariff									
SRS_ID	SRS_NAME	WHICHWAY	TARIFFC	TARIFFD	TARIFFE	TARIFFN	TARIFFJ	TARIFFM	
01.01	Victoria Lines		1	£0.25	£0.35	£1.25	£0.00	£0.35	£0.15
01.01	Victoria Lines		2	£1.05	£0.45	£0.45	£0.00	£0.35	£0.15
01.02	Oxford - Bat and Ball		1	£0.00	£0.00	£0.15	£0.00	£0.00	£0.00
01.02	Oxford - Bat and Ball		2	£0.35	£0.15	£0.15	£0.00	£0.15	£0.00

SRS_ID	SRS_NAME	WHICHWAY	TARIFFC	TARIFFD	TARIFFE	TARIFFN	TARIFFJ	TARIFFM
01.03	Cannon Street	1	£1.35	£0.35	£2.27	£0.00	£0.15	£0.00
01.03	Cannon Street	2	£1.15	£0.35	£2.23	£0.00	£0.15	£0.00
01.04	Charing Cross - Chislehurst Jcn	1	£1.35	£1.35	£8.30	£0.15	£1.15	£0.85
01.04	Charing Cross - Chislehurst Jcn	2	£6.99	£1.55	£2.50	£0.15	£1.05	£0.45
01.05	Chislehurst Jcn - Tonbridge	1	£0.15	£0.15	£1.85	£0.00	£0.15	£0.00
01.05	Chislehurst Jcn - Tonbridge	2	£0.85	£0.00	£0.15	£0.00	£0.00	£0.00
01.06	Chislehurst Jcn - Ashford	1	£0.25	£0.15	£0.75	£0.00	£0.25	£0.00
01.06	Chislehurst Jcn - Ashford	2	£0.15	£0.00	£0.00	£0.00	£0.00	£0.00
01.07	Tonbridge - Hastings	1	£0.15	£0.15	£0.25	£0.00	£0.00	£0.00
01.07	Tonbridge - Hastings	2	£0.65	£0.35	£0.25	£0.15	£0.25	£0.15
01.08	Dartford Lines plus Hayes Branch	1	£0.15	£0.15	£0.55	£0.00	£0.00	£0.00
01.08	Dartford Lines plus Hayes Branch	2	£0.75	£0.15	£0.15	£0.00	£0.15	£0.00
01.09	Bromley North	1	£0.15	£0.00	£0.35	£0.00	£0.00	£0.00
01.09	Bromley North	2	£0.55	£0.00	£0.55	£0.00	£0.00	£0.00
01.10	Dartford and Swanley - Margate	1	£0.15	£0.15	£0.85	£0.00	£0.15	£0.00
01.10	Dartford and Swanley - Margate	2	£0.65	£0.15	£0.25	£0.00	£0.15	£0.00
01.11	Redhill - Tonbridge	1	£0.00	£0.00	£0.00	£0.00	£0.00	£0.00

SRS_ID	SRS_NAME	WHICHWAY	TARIFFC	TARIFFD	TARIFFE	TARIFFN	TARIFFJ	TARIFFM
01.11	Redhill - Tonbridge	2	£0.00	£0.00	£0.00	£0.00	£0.00	£0.00
01.12	Sheerness Branch	1	£0.00	£0.00	£0.00	£0.00	£0.00	£0.00
01.12	Sheerness Branch	2	£0.00	£0.00	£0.00	£0.00	£0.00	£0.00
01.13	Strood - Tonbridge	1	£0.00	£0.00	£0.00	£0.00	£0.00	£0.00
01.13	Strood - Tonbridge	2	£0.00	£0.00	£0.00	£0.00	£0.00	£0.00
01.14	East Kent Routes	1	£0.00	£0.00	£0.00	£0.00	£0.00	£0.00
01.14	East Kent Routes	2	£0.15	£0.15	£0.00	£0.00	£0.15	£0.00
01.15	Hastings - Ashford	1	£0.00	£0.00	£0.00	£0.00	£0.00	£0.00
01.15	Hastings - Ashford	2	£0.00	£0.00	£0.00	£0.00	£0.00	£0.00
01.16	Freight Lines	1	£0.00	£0.00	£0.00	£0.00	£0.00	£0.00
01.16	Freight Lines	2	£0.25	£0.00	£0.00	£0.00	£0.00	£0.00
01.17	Tonbridge - Continental Jcn	1	£0.00	£0.00	£0.00	£0.00	£0.00	£0.00
01.17	Tonbridge - Continental Jcn	2	£0.15	£0.00	£0.00	£0.00	£0.00	£0.00
02.01	Victoria - Windmill Bridge Jcn	1	£0.85	£0.85	£1.85	£0.35	£0.85	£0.55
02.01	Victoria - Windmill Bridge Jcn	2	£2.75	£1.55	£2.93	£0.35	£1.55	£0.75
02.02	Windmill Bridge Jcn - Brighton	1	£0.95	£1.05	£2.75	£0.55	£0.95	£0.45
02.02	Windmill Bridge Jcn - Brighton	2	£1.85	£0.95	£1.05	£0.25	£0.75	£0.35

SRS_ID	SRS_NAME	WHICHWAY	TARIFFC	TARIFFD	TARIFFE	TARIFFN	TARIFFJ	TARIFFM
02.03	London Bridge - Windmill Bridge Jcn	1	£0.45	£0.35	£0.85	£0.00	£0.25	£0.15
02.03	London Bridge - Windmill Bridge Jcn	2	£4.33	£1.25	£1.65	£0.15	£1.05	£0.35
02.04	Three Bridge - Littlehampton Jcn	1	£0.00	£0.00	£0.00	£0.00	£0.00	£0.00
02.04	Three Bridge - Littlehampton Jcn	2	£0.15	£0.00	£0.00	£0.00	£0.00	£0.00
02.05	South Coastal Line	1	£0.25	£0.35	£0.35	£0.00	£0.35	£0.15
02.05	South Coastal Line	2	£0.45	£0.35	£0.25	£0.00	£0.25	£0.00
02.06	Eastbourne Line	1	£0.00	£0.00	£0.00	£0.00	£0.00	£0.00
02.06	Eastbourne Line	2	£0.00	£0.00	£0.00	£0.00	£0.00	£0.00
02.07	South Central Inner Suburban	1	£0.25	£0.25	£0.85	£0.00	£0.25	£0.15
02.07	South Central Inner Suburban	2	£0.45	£0.15	£0.15	£0.00	£0.15	£0.00
02.08	South Central Sutton Lines	1	£0.00	£0.00	£0.35	£0.00	£0.00	£0.00
02.08	South Central Sutton Lines	2	£0.25	£0.00	£0.15	£0.00	£0.00	£0.00
02.09	Dorking - Horsham	1	£0.00	£0.00	£0.15	£0.00	£0.00	£0.00
02.09	Dorking - Horsham	2	£0.00	£0.00	£0.00	£0.00	£0.00	£0.00
02.10	Hurst Green Jcn - Uckfield	1	£0.00	£0.00	£0.00	£0.00	£0.00	£0.00
02.10	Hurst Green Jcn - Uckfield	2	£0.00	£0.00	£0.00	£0.00	£0.00	£0.00
02.11	Tattenham Corner and Caterham Lines	1	£0.00	£0.00	£0.00	£0.00	£0.00	£0.00

SRS_ID	SRS_NAME	WHICHWAY	TARIFFC	TARIFFD	TARIFFE	TARIFFN	TARIFFJ	TARIFFM
02.11	Tattenham Corner and Caterham Lines	2	£0.35	£0.25	£0.00	£0.00	£0.15	£0.00
02.12	East Grinstead Line	1	£0.45	£0.15	£0.75	£0.00	£0.15	£0.00
02.12	East Grinstead Line	2	£1.25	£0.35	£0.25	£0.00	£0.15	£0.00
02.13	West London Line	1	£0.00	£0.00	£0.00	£0.00	£0.00	£0.00
02.13	West London Line	2	£0.00	£0.00	£0.00	£0.00	£0.00	£0.00
02.14	South London Line	1	£0.65	£0.95	£2.14	£0.25	£0.85	£0.35
02.14	South London Line	2	£1.45	£0.75	£1.35	£0.15	£0.95	£0.25
02.15	Thameslink Routes	1	£3.31	£1.35	£1.65	£0.25	£1.05	£0.65
02.15	Thameslink Routes	2	£3.42	£1.45	£3.15	£0.45	£1.05	£0.65
02.16	Freight Lines	1	£2.02	£0.55	£0.65	£0.15	£0.55	£0.15
02.16	Freight Lines	2	£0.95	£0.85	£1.65	£0.35	£0.85	£0.25
03.01	Waterloo - Woking (main lines)	1	£0.75	£0.75	£2.31	£0.15	£0.55	£0.15
03.01	Waterloo - Woking (main lines)	2	£4.79	£1.75	£2.30	£0.15	£1.05	£0.25
03.02	Woking - Basingstoke	1	£0.15	£0.15	£0.65	£0.00	£0.15	£0.00
03.02	Woking - Basingstoke	2	£0.55	£0.25	£0.25	£0.00	£0.15	£0.00
03.03	Basingstoke - Southampton	1	£0.25	£0.35	£0.55	£0.15	£0.25	£0.00
03.03	Basingstoke - Southampton	2	£1.35	£0.55	£0.55	£0.15	£0.45	£0.15

SRS_ID	SRS_NAME	WHICHWAY	TARIFFC	TARIFFD	TARIFFE	TARIFFN	TARIFFJ	TARIFFM
03.04	Southampton - Weymouth	1	£0.15	£0.25	£0.95	£0.00	£0.15	£0.15
03.04	Southampton - Weymouth	2	£0.55	£0.15	£0.15	£0.00	£0.15	£0.00
03.05	Lymington Branch	1	£0.00	£0.00	£0.00	£0.00	£0.00	£0.00
03.05	Lymington Branch	2	£0.00	£0.00	£0.00	£0.00	£0.00	£0.00
03.06	Woking - Portsmouth	1	£0.25	£0.35	£1.35	£0.15	£0.25	£0.25
03.06	Woking - Portsmouth	2	£1.05	£0.35	£0.35	£0.00	£0.25	£0.15
03.07	Main Line Suburban Lines	1	£0.00	£0.00	£0.45	£0.00	£0.00	£0.00
03.07	Main Line Suburban Lines	2	£1.25	£0.25	£0.25	£0.00	£0.15	£0.00
03.08	Redhill - Guildford	1	£0.15	£0.00	£0.35	£0.00	£0.00	£0.00
03.08	Redhill - Guildford	2	£0.65	£0.15	£0.55	£0.15	£0.15	£0.00
03.09	Guildford - Wokingham	1	£0.25	£0.15	£0.45	£0.00	£0.15	£0.00
03.09	Guildford - Wokingham	2	£0.25	£0.25	£0.35	£0.00	£0.25	£0.00
03.11	Cosham Jcn - St Denys/ Eastleigh	1	£0.25	£0.25	£0.15	£0.00	£0.25	£0.15
03.11	Cosham Jcn - St Denys/ Eastleigh	2	£0.25	£0.35	£0.25	£0.00	£0.25	£0.15
03.12	Inner Windsor Lines	1	£0.65	£0.55	£2.07	£0.15	£0.45	£0.00
03.12	Inner Windsor Lines	2	£3.11	£1.35	£1.95	£0.15	£0.75	£0.15
03.13	Outer Windsor Lines and Alton	1	£0.25	£0.15	£0.85	£0.15	£0.15	£0.00

SRS_ID	SRS_NAME	WHICHWAY	TARIFFC	TARIFFD	TARIFFE	TARIFFN	TARIFFJ	TARIFFM
03.13	Outer Windsor Lines and Alton	2	£0.45	£0.25	£0.25	£0.00	£0.15	£0.15
03.14	Freight Lines	1	£0.00	£0.00	£0.55	£0.00	£0.15	£0.00
03.14	Freight Lines	2	£0.35	£0.00	£0.15	£0.00	£0.00	£0.00
04.01	Worting Jcn - Wilton Jcn	1	£0.00	£0.15	£0.15	£0.00	£0.15	£0.00
04.01	Worting Jcn - Wilton Jcn	2	£0.25	£0.15	£0.00	£0.00	£0.00	£0.00
04.02	Wilton Jcn - Exmouth Jcn	1	£0.45	£0.15	£0.55	£0.15	£0.25	£0.25
04.02	Wilton Jcn - Exmouth Jcn	2	£0.55	£0.15	£0.55	£0.15	£0.15	£0.15
04.03	Redbridge / Eastleigh - Salisbury	1	£0.00	£0.15	£0.15	£0.00	£0.15	£0.00
04.03	Redbridge / Eastleigh - Salisbury	2	£0.00	£0.15	£0.00	£0.00	£0.15	£0.00
04.04	Salisbury - Bathampton / Thingley Jcn	1	£0.15	£0.25	£0.25	£0.00	£0.35	£0.15
04.04	Salisbury - Bathampton / Thingley Jcn	2	£0.15	£0.25	£0.25	£0.00	£0.25	£0.15
04.05	Castle Cary - Dorchester	1	£0.25	£0.15	£0.25	£0.00	£0.15	£0.00
04.05	Castle Cary - Dorchester	2	£0.15	£0.15	£0.25	£0.00	£0.15	£0.00
04.06	Freight Lines	1	£0.00	£0.00	£0.00	£0.00	£0.00	£0.00
04.06	Freight Lines	2	£0.00	£0.00	£0.00	£0.00	£0.00	£0.00
05.01	Bethnal Green - Stansted Airport	1	£0.15	£0.25	£0.85	£0.00	£0.25	£0.15
05.01	Bethnal Green - Stansted Airport	2	£1.35	£0.45	£0.35	£0.00	£0.25	£0.15

SRS_ID	SRS_NAME	WHICHWAY	TARIFFC	TARIFFD	TARIFFE	TARIFFN	TARIFFJ	TARIFFM
05.02	Hackney Downs - Cheshunt	1	£0.00	£0.00	£0.00	£0.00	£0.00	£0.00
05.02	Hackney Downs - Cheshunt	2	£0.00	£0.00	£0.00	£0.00	£0.00	£0.00
05.03	Hertford East Branch	1	£0.00	£0.00	£0.00	£0.00	£0.00	£0.00
05.03	Hertford East Branch	2	£0.45	£0.00	£0.00	£0.00	£0.00	£0.00
05.04	Chingford Branch	1	£0.00	£0.00	£0.00	£0.00	£0.00	£0.00
05.04	Chingford Branch	2	£0.00	£0.00	£0.00	£0.00	£0.00	£0.00
05.05	Cambridge Lines	1	£0.15	£0.15	£0.45	£0.00	£0.15	£0.15
05.05	Cambridge Lines	2	£0.45	£0.15	£0.25	£0.00	£0.15	£0.00
05.06	Ely - Kings Lynn	1	£0.15	£0.00	£0.25	£0.00	£0.00	£0.00
05.06	Ely - Kings Lynn	2	£0.15	£0.00	£0.25	£0.00	£0.00	£0.00
05.07	Peterborough - Ely - Haughley Jcn	1	£0.00	£0.00	£0.15	£0.00	£0.00	£0.00
05.07	Peterborough - Ely - Haughley Jcn	2	£0.00	£0.00	£0.15	£0.00	£0.00	£0.00
05.08	Coldham Lane Jcn - Chippenham Jcn	1	£0.00	£0.15	£0.00	£0.00	£0.15	£0.00
05.08	Coldham Lane Jcn - Chippenham Jcn	2	£0.00	£0.15	£0.00	£0.00	£0.15	£0.00
05.09	Ely - Norwich	1	£0.00	£0.00	£0.00	£0.00	£0.00	£0.00
05.09	Ely - Norwich	2	£0.00	£0.00	£0.00	£0.00	£0.00	£0.00
05.10	Freight Lines	1	£0.00	£0.00	£0.00	£0.00	£0.00	£0.00

SRS_ID	SRS_NAME	WHICHWAY	TARIFFC	TARIFFD	TARIFFE	TARIFFN	TARIFFJ	TARIFFM
05.10	Freight Lines		2	£0.00	£0.00	£0.15	£0.00	£0.00
06.01	NLL: Gospel Oak - Stratford		1	£0.00	£0.00	£0.00	£0.00	£0.00
06.01	NLL: Gospel Oak - Stratford		2	£0.00	£0.00	£0.00	£0.00	£0.00
06.02	Fenchurch Street - Shoeburyness		1	£0.15	£0.00	£0.55	£0.00	£0.00
06.02	Fenchurch Street - Shoeburyness		2	£0.85	£0.00	£0.25	£0.00	£0.00
06.03	Forest Gate Jcn - Barking		1	£0.00	£0.00	£0.00	£0.00	£0.00
06.03	Forest Gate Jcn - Barking		2	£0.00	£0.00	£0.00	£0.00	£0.00
06.04	Barking - Pitsea		1	£0.35	£0.00	£0.45	£0.00	£0.00
06.04	Barking - Pitsea		2	£0.65	£0.00	£0.25	£0.00	£0.00
06.05	Gospel Oak - Woodgrange Park		1	£0.00	£0.00	£0.00	£0.00	£0.00
06.05	Gospel Oak - Woodgrange Park		2	£0.00	£0.00	£0.00	£0.00	£0.00
06.06	NLL: Willesden Jcn - Gospel Oak		1	£0.00	£0.00	£0.00	£0.00	£0.00
06.06	NLL: Willesden Jcn - Gospel Oak		2	£0.00	£0.00	£0.00	£0.00	£0.00
06.07	NLL: Richmond / Old Kew Jcn - Willesden Jcn		1	£0.00	£0.00	£0.00	£0.00	£0.00
06.07	NLL: Richmond / Old Kew Jcn - Willesden Jcn		2	£0.00	£0.00	£0.00	£0.00	£0.00
06.08	Other Freight Lines		1	£0.00	£0.00	£0.00	£0.00	£0.00
06.08	Other Freight Lines		2	£0.00	£0.00	£0.00	£0.00	£0.00

SRS_ID	SRS_NAME	WHICHWAY	TARIFFC	TARIFFD	TARIFFE	TARIFFN	TARIFFJ	TARIFFM
06.09	NLL: No1 Lines	1	£0.00	£0.00	£0.00	£0.00	£0.00	£0.00
06.09	NLL: No1 Lines	2	£0.00	£0.00	£0.00	£0.00	£0.00	£0.00
06.10	Dudding Hill Line	1	£0.00	£0.00	£0.00	£0.00	£0.00	£0.00
06.10	Dudding Hill Line	2	£0.00	£0.00	£0.00	£0.00	£0.00	£0.00
06.11	NLL: Stratford - North Woolwich	1	£0.00	£0.00	£0.00	£0.00	£0.00	£0.00
06.11	NLL: Stratford - North Woolwich	2	£0.00	£0.00	£0.00	£0.00	£0.00	£0.00
07.01	Liverpool Street - Shenfield	1	£0.95	£0.65	£3.05	£0.25	£0.35	£0.25
07.01	Liverpool Street - Shenfield	2	£4.27	£0.95	£1.25	£0.15	£0.55	£0.35
07.02	Shenfield - Ipswich	1	£0.85	£0.65	£4.03	£0.25	£0.45	£0.15
07.02	Shenfield - Ipswich	2	£3.30	£0.85	£0.85	£0.15	£0.45	£0.15
07.03	Ipswich - Norwich	1	£0.15	£0.35	£0.75	£0.15	£0.25	£0.00
07.03	Ipswich - Norwich	2	£0.65	£0.35	£0.35	£0.00	£0.35	£0.00
07.04	Freight Lines	1	£0.15	£0.35	£0.25	£0.00	£0.25	£0.15
07.04	Freight Lines	2	£0.35	£0.35	£0.25	£0.00	£0.25	£0.15
07.05	Shenfield - Southend Victoria / Southminster	1	£0.75	£0.25	£0.65	£0.15	£0.25	£0.25
07.05	Shenfield - Southend Victoria / Southminster	2	£0.55	£0.25	£0.75	£0.15	£0.25	£0.25
07.06	Braintree Branch	1	£0.75	£0.15	£0.45	£0.00	£0.15	£0.15

SRS_ID	SRS_NAME	WHICHWAY	TARIFFC	TARIFFD	TARIFFE	TARIFFN	TARIFFJ	TARIFFM
07.06	Braintree Branch	2	£0.75	£0.15	£0.45	£0.00	£0.15	£0.15
07.07	Harwich Branch	1	£0.00	£0.00	£0.15	£0.00	£0.00	£0.00
07.07	Harwich Branch	2	£0.25	£0.15	£0.15	£0.00	£0.00	£0.00
07.08	Walton and Clacton Branches	1	£0.15	£0.00	£0.45	£0.00	£0.15	£0.00
07.08	Walton and Clacton Branches	2	£0.35	£0.15	£0.15	£0.00	£0.15	£0.00
07.09	Romford - Upminster	1	£0.00	£0.00	£0.00	£0.00	£0.00	£0.00
07.09	Romford - Upminster	2	£0.00	£0.00	£0.00	£0.00	£0.00	£0.00
07.10	Sudbury to Marks Tey	1	£0.00	£0.00	£0.00	£0.00	£0.00	£0.00
07.10	Sudbury to Marks Tey	2	£0.00	£0.00	£0.00	£0.00	£0.00	£0.00
07.11	East Suffolk line and Norfolk Branches	1	£0.15	£0.15	£0.15	£0.00	£0.00	£0.00
07.11	East Suffolk line and Norfolk Branches	2	£0.15	£0.15	£0.00	£0.00	£0.00	£0.00
07.12	Felixstowe - Ipswich Yard	1	£0.35	£0.35	£0.55	£0.25	£0.25	£0.00
07.12	Felixstowe - Ipswich Yard	2	£0.35	£0.35	£0.55	£0.25	£0.25	£0.00
08.01	Kings Cross - Peterborough	1	£0.15	£0.15	£0.45	£0.00	£0.15	£0.00
08.01	Kings Cross - Peterborough	2	£0.65	£0.35	£0.35	£0.00	£0.35	£0.15
08.02	Moorgate Branch	1	£0.00	£0.00	£0.15	£0.00	£0.00	£0.00
08.02	Moorgate Branch	2	£0.00	£0.00	£0.00	£0.00	£0.00	£0.00

SRS_ID	SRS_NAME	WHICHWAY	TARIFFC	TARIFFD	TARIFFE	TARIFFN	TARIFFJ	TARIFFM
08.03	Hertford Loop	1	£0.00	£0.15	£0.35	£0.00	£0.15	£0.00
08.03	Hertford Loop	2	£0.35	£0.15	£0.35	£0.00	£0.15	£0.00
08.04	Peterborough - Doncaster	1	£0.15	£0.15	£0.25	£0.00	£0.15	£0.15
08.04	Peterborough - Doncaster	2	£0.35	£0.25	£0.15	£0.00	£0.15	£0.15
08.05	Doncaster - Holbeck W Jcn	1	£0.45	£0.65	£0.95	£0.35	£0.55	£0.35
08.05	Doncaster - Holbeck W Jcn	2	£0.75	£0.55	£0.45	£0.00	£0.35	£0.25
08.06	Doncaster - Colton Jcn	1	£0.15	£0.35	£0.35	£0.15	£0.25	£0.35
08.06	Doncaster - Colton Jcn	2	£0.45	£0.55	£0.55	£0.00	£0.35	£0.25
08.07	Colton Jcn - Northallerton	1	£0.15	£0.25	£0.35	£0.00	£0.25	£0.15
08.07	Colton Jcn - Northallerton	2	£0.15	£0.15	£0.15	£0.00	£0.15	£0.00
08.08	Northallerton - Newcastle	1	£0.15	£0.55	£0.65	£0.25	£0.35	£0.25
08.08	Northallerton - Newcastle	2	£0.55	£0.75	£0.45	£0.15	£0.45	£0.35
08.09	Newcastle - Border	1	£0.00	£0.15	£0.25	£0.00	£0.15	£0.15
08.09	Newcastle - Border	2	£0.25	£0.15	£0.00	£0.00	£0.15	£0.15
08.10	Border - Edinburgh	1	£0.25	£0.55	£0.95	£0.15	£0.95	£0.35
08.10	Border - Edinburgh	2	£0.55	£0.25	£0.35	£0.00	£0.45	£0.25
08.11	North Berwick Branch	1	£0.75	£0.45	£1.25	£0.00	£2.14	£0.25

SRS_ID	SRS_NAME	WHICHWAY	TARIFFC	TARIFFD	TARIFFE	TARIFFN	TARIFFJ	TARIFFM
08.11	North Berwick Branch	2	£0.75	£0.45	£1.25	£0.00	£2.14	£0.25
09.01	Carlisle - Newcastle	1	£0.00	£0.00	£0.00	£0.00	£0.00	£0.00
09.01	Carlisle - Newcastle	2	£0.00	£0.00	£0.00	£0.00	£0.15	£0.00
09.02	Darlington - Bishop Auckland	1	£0.00	£0.00	£0.00	£0.00	£0.00	£0.00
09.02	Darlington - Bishop Auckland	2	£0.00	£0.00	£0.00	£0.00	£0.00	£0.00
09.03	Middlesbrough - Whitby	1	£0.00	£0.00	£0.00	£0.00	£0.00	£0.00
09.03	Middlesbrough - Whitby	2	£0.00	£0.00	£0.00	£0.00	£0.00	£0.00
09.04	Northallerton - Stockton Cut Jcn	1	£0.00	£0.15	£0.15	£0.00	£0.15	£0.00
09.04	Northallerton - Stockton Cut Jcn	2	£0.00	£0.00	£0.00	£0.00	£0.00	£0.00
09.05	Stockton - Newcastle	1	£0.15	£0.15	£0.00	£0.00	£0.00	£0.00
09.05	Stockton - Newcastle	2	£0.00	£0.00	£0.00	£0.00	£0.15	£0.00
09.06	Darlington - Eaglescliffe S Jcn	1	£0.25	£0.25	£0.15	£0.00	£0.15	£0.15
09.06	Darlington - Eaglescliffe S Jcn	2	£0.00	£0.00	£0.00	£0.00	£0.00	£0.00
09.07	Stockton Cut Jcn - Saltburn	1	£0.00	£0.00	£0.00	£0.00	£0.00	£0.00
09.07	Stockton Cut Jcn - Saltburn	2	£0.00	£0.00	£0.15	£0.00	£0.00	£0.00
09.08	Stillington Branch	1	£0.00	£0.15	£0.00	£0.00	£0.25	£0.00
09.08	Stillington Branch	2	£0.00	£0.15	£0.00	£0.00	£0.00	£0.00

SRS_ID	SRS_NAME	WHICHWAY	TARIFFC	TARIFFD	TARIFFE	TARIFFN	TARIFFJ	TARIFFM
09.09	Blyth and Tyne Network	1	£0.00	£0.00	£0.00	£0.00	£0.00	£0.25
09.09	Blyth and Tyne Network	2	£0.00	£0.00	£0.15	£0.00	£0.00	£0.25
09.10	Freight Branches	1	£0.00	£0.00	£0.00	£0.00	£0.00	£0.00
09.10	Freight Branches	2	£0.00	£0.00	£0.00	£0.00	£0.00	£0.00
10.01	Holbeck West Jcn - Leeds	1	£3.15	£1.55	£3.19	£0.00	£3.46	£0.15
10.01	Holbeck West Jcn - Leeds	2	£1.35	£1.05	£1.85	£0.00	£1.45	£0.15
10.02	Harrogate Line	1	£0.15	£0.00	£0.15	£0.00	£0.00	£0.00
10.02	Harrogate Line	2	£0.35	£0.00	£0.00	£0.00	£0.00	£0.00
10.03	Leeds North West	1	£0.15	£0.15	£0.25	£0.00	£0.15	£0.00
10.03	Leeds North West	2	£0.55	£0.25	£0.35	£0.00	£0.35	£0.00
10.04	Bradford Interchange Lines	1	£0.00	£0.15	£0.15	£0.00	£0.15	£0.00
10.04	Bradford Interchange Lines	2	£0.15	£0.15	£0.15	£0.00	£0.00	£0.00
10.05	NTP: Holbeck East Jcn - Stalybridge	1	£1.25	£0.75	£1.75	£0.00	£1.05	£0.00
10.05	NTP: Holbeck East Jcn - Stalybridge	2	£1.05	£0.55	£1.15	£0.00	£0.85	£0.00
10.06	Leeds - Colton Jcn	1	£1.85	£0.85	£1.65	£0.00	£1.45	£0.15
10.06	Leeds - Colton Jcn	2	£1.35	£1.25	£2.01	£0.00	£1.25	£0.25
10.07	Micklefield Jcn - Hull	1	£0.35	£0.15	£0.25	£0.00	£0.15	£0.00

SRS_ID	SRS_NAME	WHICHWAY	TARIFFC	TARIFFD	TARIFFE	TARIFFN	TARIFFJ	TARIFFM
10.07	Micklefield Jcn - Hull	2	£0.25	£0.15	£0.15	£0.00	£0.15	£0.00
10.08	Gilberdyke Jcn - Throne Jcn and Knottingley West Jcn plus Church Fenton Jcn - Moorthorpe	1	£0.15	£0.15	£0.25	£0.15	£0.15	£0.00
10.08	Gilberdyke Jcn - Throne Jcn and Knottingley West Jcn plus Church Fenton Jcn - Moorthorpe	2	£0.15	£0.15	£0.15	£0.15	£0.00	£0.00
10.09	Knottingley West Jcn - Thornhill Jcn (via Crofton Jcn and via Castleford Jcn) - Leeds West Jcn / Whitwood	1	£0.15	£0.15	£0.15	£0.15	£0.00	£0.00
10.09	Knottingley West Jcn - Thornhill Jcn (via Crofton Jcn and via Castleford Jcn) - Leeds West Jcn / Whitwood	2	£0.00	£0.15	£0.00	£0.00	£0.00	£0.00
10.10	Rochdale East Jcn - Heaton Lodge Jcn / Bradley Jcn	1	£0.00	£0.00	£0.00	£0.00	£0.00	£0.00
10.10	Rochdale East Jcn - Heaton Lodge Jcn / Bradley Jcn	2	£0.00	£0.00	£0.00	£0.00	£0.00	£0.00
10.11	Hull - Seamer	1	£0.00	£0.00	£0.00	£0.00	£0.00	£0.00
10.11	Hull - Seamer	2	£0.00	£0.00	£0.00	£0.00	£0.00	£0.00
10.12	York - Scarborough	1	£0.00	£0.00	£0.00	£0.00	£0.00	£0.00
10.12	York - Scarborough	2	£0.00	£0.00	£0.00	£0.00	£0.00	£0.00
10.13	Freight Through Branches	1	£0.00	£0.25	£0.35	£0.15	£0.00	£0.15
10.13	Freight Through Branches	2	£0.00	£0.15	£0.00	£0.15	£0.00	£0.00
10.14	Freight Branches	1	£0.00	£0.00	£0.00	£0.00	£0.00	£0.00
10.14	Freight Branches	2	£0.35	£0.15	£0.15	£0.00	£0.15	£0.00

SRS_ID	SRS_NAME	WHICHWAY	TARIFFC	TARIFFD	TARIFFE	TARIFFN	TARIFFJ	TARIFFM
11.01	Chesterfield - Swinton (via Sheffield)	1	£0.25	£0.65	£1.05	£0.15	£0.85	£0.35
11.01	Chesterfield - Swinton (via Sheffield)	2	£1.25	£0.55	£0.75	£0.15	£0.65	£0.35
11.02	Swinton - Brocklesby Jcn	1	£0.15	£0.15	£0.15	£0.15	£0.15	£0.00
11.02	Swinton - Brocklesby Jcn	2	£0.25	£0.25	£0.25	£0.00	£0.15	£0.00
11.03	South Kirkby Jcn - Swinton	1	£0.00	£0.15	£0.15	£0.15	£0.15	£0.00
11.03	South Kirkby Jcn - Swinton	2	£0.65	£0.55	£0.45	£0.15	£0.55	£0.00
11.04	Nunnery Main Line Jcn - Trent Jcns - Rotherham Central Jcn	1	£0.00	£0.00	£0.00	£0.00	£0.00	£0.00
11.04	Nunnery Main Line Jcn - Trent Jcns - Rotherham Central Jcn	2	£0.15	£0.00	£0.00	£0.00	£0.00	£0.00
11.05	STP: Hazel Grove Jcn - Dore Jcns	1	£0.00	£0.15	£0.15	£0.00	£0.15	£0.00
11.05	STP: Hazel Grove Jcn - Dore Jcns	2	£0.15	£0.25	£0.35	£0.00	£0.25	£0.00
11.06	Wincobank Jcn - Horbury Jcn	1	£0.00	£0.00	£0.00	£0.00	£0.00	£0.00
11.06	Wincobank Jcn - Horbury Jcn	2	£0.25	£0.00	£0.15	£0.00	£0.00	£0.00
11.07	Black Carr - Trent Jcn	1	£0.00	£0.00	£0.00	£0.00	£0.00	£0.00
11.07	Black Carr - Trent Jcn	2	£0.00	£0.00	£0.00	£0.00	£0.00	£0.15
11.08	Newark - Wrawby Jcn	1	£0.00	£0.00	£0.00	£0.00	£0.00	£0.00
11.08	Newark - Wrawby Jcn	2	£0.15	£0.15	£0.15	£0.00	£0.00	£0.00
11.09	Brocklesby Jcn - Cleethorpes	1	£0.00	£0.00	£0.00	£0.00	£0.00	£0.00

SRS_ID	SRS_NAME	WHICHWAY	TARIFFC	TARIFFD	TARIFFE	TARIFFN	TARIFFJ	TARIFFM
11.09	Brocklesby Jcn - Cleethorpes	2	£0.00	£0.00	£0.00	£0.00	£0.00	£0.00
11.10	Penistone Line	1	£0.15	£0.15	£0.15	£0.00	£0.00	£0.00
11.10	Penistone Line	2	£0.15	£0.15	£0.15	£0.00	£0.00	£0.00
11.11	Barton-on-Humber Branch	1	£0.00	£0.00	£0.00	£0.00	£0.00	£0.00
11.11	Barton-on-Humber Branch	2	£0.00	£0.00	£0.00	£0.00	£0.00	£0.00
11.12	Gainsborough Lines	1	£0.00	£0.00	£0.00	£0.00	£0.35	£0.15
11.12	Gainsborough Lines	2	£0.00	£0.00	£0.00	£0.00	£0.25	£0.15
11.13	Lincoln - Werrington Jcn	1	£0.00	£0.00	£0.00	£0.00	£0.00	£0.00
11.13	Lincoln - Werrington Jcn	2	£0.00	£0.00	£0.00	£0.00	£0.00	£0.00
11.14	Skegness - Grantham	1	£0.00	£0.00	£0.00	£0.00	£0.00	£0.00
11.14	Skegness - Grantham	2	£0.00	£0.00	£0.00	£0.00	£0.00	£0.00
11.15	Freight Through Routes	1	£0.00	£0.00	£0.00	£0.00	£0.00	£0.00
11.15	Freight Through Routes	2	£0.00	£0.00	£0.00	£0.00	£0.00	£0.00
11.16	Immingham and Killingholme Docks	1	£0.00	£0.00	£0.00	£0.00	£0.00	£0.00
11.16	Immingham and Killingholme Docks	2	£0.00	£0.00	£0.00	£0.00	£0.00	£0.00
11.17	Other Freight Branches	1	£0.00	£0.00	£0.00	£0.00	£0.00	£0.00
11.17	Other Freight Branches	2	£0.00	£0.00	£0.00	£0.00	£0.00	£0.00

SRS_ID	SRS_NAME	WHICHWAY	TARIFFC	TARIFFD	TARIFFE	TARIFFN	TARIFFJ	TARIFFM
12.01	Berks and Hants	1	£0.00	£0.35	£0.95	£0.00	£0.55	£0.25
12.01	Berks and Hants	2	£0.75	£0.35	£0.45	£0.00	£0.65	£0.25
12.02	Cogload Jcn - Exeter St Davids	1	£0.00	£0.25	£0.15	£0.00	£0.15	£0.15
12.02	Cogload Jcn - Exeter St Davids	2	£0.35	£0.15	£0.15	£0.00	£0.15	£0.15
12.03	Exeter St Davids - Plymouth	1	£0.00	£0.45	£0.55	£0.15	£0.35	£0.25
12.03	Exeter St Davids - Plymouth	2	£0.45	£0.45	£0.55	£0.00	£0.55	£0.35
12.04	Plymouth - Penzance	1	£0.15	£0.00	£0.25	£0.00	£0.25	£0.15
12.04	Plymouth - Penzance	2	£0.25	£0.15	£0.15	£0.00	£0.25	£0.15
12.05	Exeter - Exmouth Jcn	1	£0.25	£0.35	£0.55	£0.25	£0.45	£0.15
12.05	Exeter - Exmouth Jcn	2	£0.15	£0.15	£0.15	£0.00	£0.15	£0.00
12.06	Paignton Branch	1	£0.00	£0.00	£0.00	£0.00	£0.00	£0.00
12.06	Paignton Branch	2	£0.00	£0.00	£0.00	£0.00	£0.00	£0.00
12.07	Barnstaple Branch	1	£0.00	£0.00	£0.00	£0.00	£0.00	£0.00
12.07	Barnstaple Branch	2	£0.00	£0.00	£0.00	£0.00	£0.00	£0.00
12.08	St Ives Branch	1	£0.00	£0.00	£0.00	£0.00	£0.00	£0.00
12.08	St Ives Branch	2	£0.25	£0.15	£0.15	£0.00	£0.35	£0.15
12.09	Looe Branch	1	£0.00	£0.00	£0.00	£0.00	£0.00	£0.00

SRS_ID	SRS_NAME	WHICHWAY	TARIFFC	TARIFFD	TARIFFE	TARIFFN	TARIFFJ	TARIFFM
12.09	Looe Branch	2	£0.00	£0.00	£0.00	£0.00	£0.00	£0.00
12.10	Exmouth Branch	1	£0.15	£0.25	£0.15	£0.00	£0.15	£0.00
12.10	Exmouth Branch	2	£0.15	£0.25	£0.15	£0.00	£0.15	£0.00
12.11	Falmouth Docks Branch	1	£0.00	£0.00	£0.00	£0.00	£0.00	£0.00
12.11	Falmouth Docks Branch	2	£0.00	£0.00	£0.00	£0.00	£0.00	£0.00
12.12	Newquay Branch	1	£0.00	£0.00	£0.00	£0.00	£0.00	£0.00
12.12	Newquay Branch	2	£0.00	£0.00	£0.00	£0.00	£0.00	£0.00
12.13	Gunnislake Branch	1	£0.00	£0.00	£0.00	£0.00	£0.00	£0.00
12.13	Gunnislake Branch	2	£0.00	£0.00	£0.00	£0.00	£0.00	£0.00
12.14	Freight Lines	1	£0.00	£0.00	£0.00	£0.00	£0.00	£0.00
12.14	Freight Lines	2	£0.00	£0.00	£0.00	£0.00	£0.00	£0.00
13.01	Paddington - Airport Jcn	1	£1.25	£1.25	£4.84	£0.25	£1.35	£0.55
13.01	Paddington - Airport Jcn	2	£5.80	£3.94	£5.86	£0.75	£3.85	£1.85
13.02	Airport Jcn - Southcote Jcn	1	£1.45	£1.85	£2.49	£0.25	£1.65	£0.35
13.02	Airport Jcn - Southcote Jcn	2	£2.29	£2.18	£2.21	£0.25	£1.75	£0.55
13.03	Reading - Didcot	1	£1.75	£1.95	£2.91	£0.35	£1.85	£0.55
13.03	Reading - Didcot	2	£4.31	£3.45	£3.46	£0.55	£3.33	£1.05

SRS_ID	SRS_NAME	WHICHWAY	TARIFFC	TARIFFD	TARIFFE	TARIFFN	TARIFFJ	TARIFFM
13.04	Didcot - Border (nr Pilning)	1	£0.95	£1.45	£2.79	£0.45	£0.85	£0.85
13.04	Didcot - Border (nr Pilning)	2	£1.45	£1.65	£2.20	£0.25	£0.95	£0.55
13.05	Border (nr Pilning) - Swansea	1	£0.25	£0.55	£0.65	£0.15	£0.35	£0.35
13.05	Border (nr Pilning) - Swansea	2	£0.65	£0.35	£0.55	£0.00	£0.45	£0.25
13.06	Wotton Bassett Jcn - Cogload Jcn (via Bristol Temple Meads) - Filton Jcn	1	£0.95	£1.35	£1.55	£0.45	£1.45	£0.65
13.06	Wotton Bassett Jcn - Cogload Jcn (via Bristol Temple Meads) - Filton Jcn	2	£1.05	£1.15	£1.25	£0.25	£1.25	£0.65
13.07	Didcot Jcn - Wolvercot Jcn	1	£1.65	£1.65	£3.60	£0.35	£1.05	£0.35
13.07	Didcot Jcn - Wolvercot Jcn	2	£2.49	£1.15	£1.35	£0.25	£0.95	£0.35
13.08	Bristol - Birmingham Line	1	£0.25	£0.35	£0.35	£0.00	£0.35	£0.15
13.08	Bristol - Birmingham Line	2	£0.15	£0.25	£0.25	£0.00	£0.25	£0.15
13.09	Heathrow Airport	1	£0.75	£0.85	£1.55	£0.25	£0.95	£0.45
13.09	Heathrow Airport	2	£0.55	£0.65	£0.65	£0.15	£0.65	£0.45
13.10	Greenford Lines	1	£0.00	£0.00	£0.00	£0.00	£0.00	£0.00
13.10	Greenford Lines	2	£0.65	£0.25	£0.00	£0.00	£0.15	£0.00
13.11	Southcote Jcn - Basingstoke Jcn	1	£0.45	£0.75	£0.75	£0.35	£0.65	£0.45
13.11	Southcote Jcn - Basingstoke Jcn	2	£0.55	£0.65	£0.45	£0.15	£0.35	£0.25

SRS_ID	SRS_NAME	WHICHWAY	TARIFFC	TARIFFD	TARIFFE	TARIFFN	TARIFFJ	TARIFFM
13.12	Swindon Jcn - Standish Jcn	1	£1.35	£1.05	£0.65	£0.25	£1.05	£0.95
13.12	Swindon Jcn - Standish Jcn	2	£1.35	£1.35	£0.65	£0.15	£0.85	£0.85
13.13	Cotswolds Line	1	£0.25	£0.25	£0.85	£0.00	£0.15	£0.00
13.13	Cotswolds Line	2	£0.00	£0.15	£0.15	£0.00	£0.15	£0.00
13.14	Border (Chepstow) - Gloucester	1	£0.00	£0.00	£0.00	£0.00	£0.00	£0.00
13.14	Border (Chepstow) - Gloucester	2	£0.00	£0.00	£0.00	£0.00	£0.00	£0.00
13.15	Weston-Super-Mare Loop	1	£2.12	£1.45	£1.75	£0.35	£1.35	£0.95
13.15	Weston-Super-Mare Loop	2	£2.32	£1.25	£1.45	£0.25	£1.35	£0.85
13.17	Ebbw Vale Line	1	£0.00	£0.00	£0.00	£0.00	£0.00	£0.00
13.17	Ebbw Vale Line	2	£0.00	£0.00	£0.00	£0.00	£0.00	£0.00
13.18	Henley-on-Thames Branch	1	£0.35	£0.00	£0.15	£0.00	£0.00	£0.00
13.18	Henley-on-Thames Branch	2	£0.35	£0.00	£0.15	£0.00	£0.00	£0.00
13.19	Marlow Branch	1	£0.15	£0.00	£0.00	£0.00	£0.00	£0.00
13.19	Marlow Branch	2	£0.15	£0.00	£0.00	£0.00	£0.00	£0.00
13.20	Windsor and Eton Branch	1	£0.00	£0.00	£0.00	£0.00	£0.00	£0.00
13.20	Windsor and Eton Branch	2	£0.00	£0.00	£0.00	£0.00	£0.00	£0.00
13.21	Bicester Town branch	1	£0.00	£0.00	£0.00	£0.00	£0.00	£0.00

SRS_ID	SRS_NAME	WHICHWAY	TARIFFC	TARIFFD	TARIFFE	TARIFFN	TARIFFJ	TARIFFM
13.21	Bicester Town branch	2	£0.00	£0.00	£0.00	£0.00	£0.00	£0.00
13.22	Avonmouth Branch	1	£0.15	£0.15	£0.00	£0.00	£0.00	£0.00
13.22	Avonmouth Branch	2	£0.15	£0.15	£0.00	£0.00	£0.00	£0.00
13.23	Freight Lines (England)	1	£0.15	£0.15	£0.15	£0.00	£0.45	£0.25
13.23	Freight Lines (England)	2	£0.65	£0.15	£0.00	£0.00	£0.35	£0.25
13.24	Freight Lines (Wales)	1	£0.00	£0.00	£0.00	£0.00	£0.00	£0.00
13.24	Freight Lines (Wales)	2	£0.85	£0.35	£0.65	£0.00	£0.35	£0.00
14.01	Newport - Border (Hereford)	1	£0.00	£0.00	£0.00	£0.00	£0.00	£0.00
14.01	Newport - Border (Hereford)	2	£0.00	£0.00	£0.00	£0.00	£0.00	£0.00
14.02	North and West Route	1	£0.00	£0.00	£0.00	£0.00	£0.00	£0.00
14.02	North and West Route	2	£0.00	£0.00	£0.00	£0.00	£0.00	£0.00
14.03	Shrewsbury - Border (Chirk)	1	£0.00	£0.00	£0.00	£0.00	£0.00	£0.00
14.03	Shrewsbury - Border (Chirk)	2	£0.00	£0.00	£0.00	£0.00	£0.00	£0.00
14.04	Border (Chirk) - Border (Wrexham)	1	£0.00	£0.00	£0.00	£0.00	£0.00	£0.00
14.04	Border (Chirk) - Border (Wrexham)	2	£0.00	£0.00	£0.00	£0.00	£0.00	£0.00
14.05	Saltney Jcn - Border (Wrexham)	1	£0.00	£0.00	£0.00	£0.00	£0.00	£0.00
14.05	Saltney Jcn - Border (Wrexham)	2	£0.00	£0.00	£0.00	£0.00	£0.00	£0.00

SRS_ID	SRS_NAME	WHICHWAY	TARIFFC	TARIFFD	TARIFFE	TARIFFN	TARIFFJ	TARIFFM
14.06	Cambrian Lines	1	£0.00	£0.00	£0.00	£0.00	£0.00	£0.00
14.06	Cambrian Lines	2	£0.00	£0.00	£0.00	£0.00	£0.00	£0.00
14.09	Llandello - Border (Knighton)	1	£0.00	£0.00	£0.00	£0.00	£0.00	£0.00
14.09	Llandello - Border (Knighton)	2	£0.00	£0.00	£0.00	£0.00	£0.00	£0.00
14.10	Pembroke Dock - Whitland Jcn	1	£0.00	£0.00	£0.00	£0.00	£0.00	£0.00
14.10	Pembroke Dock - Whitland Jcn	2	£0.00	£0.00	£0.00	£0.00	£0.00	£0.00
14.11	Fishguard - Clarbeston Road Jcn	1	£0.00	£0.00	£0.00	£0.00	£0.00	£0.00
14.11	Fishguard - Clarbeston Road Jcn	2	£0.00	£0.00	£0.00	£0.00	£0.00	£0.00
14.12	Swansea - Milford Haven	1	£0.00	£0.00	£0.00	£0.00	£0.00	£0.00
14.12	Swansea - Milford Haven	2	£0.00	£0.00	£0.00	£0.00	£0.00	£0.00
14.14	Freight Lines (Wales)	1	£0.00	£0.00	£0.00	£0.00	£0.00	£0.00
14.14	Freight Lines (Wales)	2	£0.00	£0.00	£0.00	£0.00	£0.00	£0.00
15.01	Maesteg - Bridgend	1	£0.00	£0.00	£0.15	£0.00	£0.00	£0.00
15.01	Maesteg - Bridgend	2	£0.25	£0.15	£0.15	£0.00	£0.15	£0.00
15.02	Freight Lines	1	£0.00	£0.00	£0.00	£0.00	£0.00	£0.00
15.02	Freight Lines	2	£0.00	£0.00	£0.00	£0.00	£0.00	£0.00
15.03	South Wales Valleys	1	£0.00	£0.00	£0.00	£0.00	£0.15	£0.00

SRS_ID	SRS_NAME	WHICHWAY	TARIFFC	TARIFFD	TARIFFE	TARIFFN	TARIFFJ	TARIFFM
15.03	South Wales Valleys	2	£0.15	£0.00	£0.00	£0.00	£0.15	£0.00
16.01	Marylebone - Aynho Jcn	1	£0.15	£0.15	£0.65	£0.00	£0.00	£0.00
16.01	Marylebone - Aynho Jcn	2	£0.65	£0.15	£0.25	£0.00	£0.00	£0.00
16.02	Neasden South Jcn - Harrow	1	£0.45	£0.15	£0.65	£0.00	£0.00	£0.00
16.02	Neasden South Jcn - Harrow	2	£2.17	£0.35	£0.45	£0.00	£0.15	£0.00
16.03	Aylesbury - Great Missenden	1	£0.00	£0.00	£0.15	£0.00	£0.00	£0.00
16.03	Aylesbury - Great Missenden	2	£0.00	£0.00	£0.00	£0.00	£0.00	£0.00
16.04	Princes Risborough Jcn - Aylesbury	1	£0.25	£0.00	£0.15	£0.00	£0.15	£0.00
16.04	Princes Risborough Jcn - Aylesbury	2	£0.25	£0.00	£0.15	£0.00	£0.15	£0.00
16.05	Freight Lines	1	£0.00	£0.00	£0.00	£0.00	£0.00	£0.00
16.05	Freight Lines	2	£0.00	£0.00	£0.00	£0.00	£0.00	£0.00
16.xx	Harrow-on-the-Hill - Amersham	1	£0.25	£0.15	£0.45	£0.00	£0.00	£0.00
16.xx	Harrow-on-the-Hill - Amersham	2	£0.00	£0.00	£0.00	£0.00	£0.00	£0.00
17.01	Birmingham New Street - Rugby	1	£1.55	£1.35	£1.55	£0.15	£2.80	£0.25
17.01	Birmingham New Street - Rugby	2	£1.25	£2.01	£2.57	£0.45	£5.02	£0.25
17.02	Birmingham New Street - Wolverhampton	1	£0.75	£1.65	£1.65	£0.25	£1.55	£0.15
17.02	Birmingham New Street - Wolverhampton	2	£2.97	£2.11	£2.43	£0.35	£2.26	£0.25

SRS_ID	SRS_NAME	WHICHWAY	TARIFFC	TARIFFD	TARIFFE	TARIFFN	TARIFFJ	TARIFFM
17.03	Wolverhampton - Stafford	1	£0.25	£0.15	£0.25	£0.00	£0.85	£0.00
17.03	Wolverhampton - Stafford	2	£0.25	£0.45	£0.45	£0.15	£1.15	£0.00
17.04	Birmingham New Street - Barnt Green	1	£0.25	£0.35	£0.35	£0.00	£0.35	£0.00
17.04	Birmingham New Street - Barnt Green	2	£0.35	£0.55	£0.55	£0.00	£0.45	£0.00
17.05	Barnt Green - Stoke Works Jcn	1	£0.35	£0.35	£0.55	£0.00	£0.35	£0.15
17.05	Barnt Green - Stoke Works Jcn	2	£0.15	£0.25	£0.35	£0.00	£0.15	£0.00
17.06	Grand Jcn - Wichnor Jcn	1	£0.00	£0.15	£0.15	£0.00	£0.15	£0.15
17.06	Grand Jcn - Wichnor Jcn	2	£0.15	£0.25	£0.15	£0.00	£0.15	£0.00
17.07	Hatton Jcn / Coventry South Jcn - Wolvercot Jcn	1	£0.35	£0.25	£0.35	£0.00	£0.25	£0.00
17.07	Hatton Jcn / Coventry South Jcn - Wolvercot Jcn	2	£0.25	£0.25	£0.65	£0.00	£0.15	£0.00
17.08	Snow Hill - Hatton Jcn	1	£0.65	£0.95	£1.05	£0.00	£0.85	£0.15
17.08	Snow Hill - Hatton Jcn	2	£0.75	£1.05	£0.85	£0.15	£0.85	£0.15
17.09	Stechford Jcn - Bushbury Jcn	1	£0.00	£0.15	£0.00	£0.00	£0.95	£0.15
17.09	Stechford Jcn - Bushbury Jcn	2	£0.00	£0.00	£0.00	£0.00	£0.75	£0.15
17.10	Birmingham Snow Hill - Stourbridge Jcn plus Galton Jcn	1	£0.00	£0.00	£0.00	£0.00	£0.00	£0.00
17.10	Birmingham Snow Hill - Stourbridge Jcn plus Galton Jcn	2	£0.00	£0.00	£0.00	£0.00	£0.00	£0.00
17.11	Stourbridge Jcn - Worcester - Shelwick Jcn	1	£0.00	£0.00	£0.15	£0.00	£0.00	£0.00

SRS_ID	SRS_NAME	WHICHWAY	TARIFFC	TARIFFD	TARIFFE	TARIFFN	TARIFFJ	TARIFFM
17.11	Stourbridge Jcn - Worcester - Shelwick Jcn	2	£0.00	£0.00	£0.00	£0.00	£0.00	£0.00
17.12	Stratford-upon-Avon Lines	1	£0.00	£0.00	£0.00	£0.00	£0.00	£0.00
17.12	Stratford-upon-Avon Lines	2	£0.00	£0.00	£0.00	£0.00	£0.00	£0.00
17.13	Cross City North	1	£0.00	£0.00	£0.00	£0.00	£0.00	£0.00
17.13	Cross City North	2	£0.00	£0.00	£0.00	£0.00	£0.00	£0.00
17.14	Rugeley - Bescot	1	£0.15	£0.00	£0.15	£0.00	£0.00	£0.00
17.14	Rugeley - Bescot	2	£0.00	£0.00	£0.00	£0.00	£0.00	£0.00
17.15	Redditch - Barnt Green Jcn	1	£0.00	£0.00	£0.00	£0.00	£0.00	£0.00
17.15	Redditch - Barnt Green Jcn	2	£0.00	£0.00	£0.00	£0.00	£0.00	£0.00
17.16	Wolverhampton û Abbey Foregate Jn	1	£0.00	£0.00	£0.00	£0.00	£0.00	£0.00
17.16	Wolverhampton û Abbey Foregate Jn	2	£0.00	£0.00	£0.00	£0.00	£0.00	£0.00
17.17	Camp Hill Line	1	£0.00	£0.00	£0.00	£0.00	£0.00	£0.00
17.17	Camp Hill Line	2	£0.15	£0.15	£0.00	£0.00	£0.15	£0.00
17.18	Water Orton - Nuneaton	1	£0.00	£0.15	£0.25	£0.00	£0.25	£0.45
17.18	Water Orton - Nuneaton	2	£0.25	£0.25	£0.15	£0.15	£0.15	£0.35
17.19	Nuneaton - Coventry North Jcn	1	£0.15	£0.15	£0.15	£0.00	£0.25	£0.00
17.19	Nuneaton - Coventry North Jcn	2	£0.25	£0.25	£0.35	£0.00	£0.00	£0.00

SRS_ID	SRS_NAME	WHICHWAY	TARIFFC	TARIFFD	TARIFFE	TARIFFN	TARIFFJ	TARIFFM
17.20	Soho Jcns - Perry Barr Jcns	1	£0.35	£0.25	£0.15	£0.25	£1.25	£0.15
17.20	Soho Jcns - Perry Barr Jcns	2	£0.25	£0.25	£0.15	£0.15	£1.55	£0.00
17.21	Main Freight Lines	1	£0.00	£0.00	£0.00	£0.00	£0.00	£0.00
17.21	Main Freight Lines	2	£0.00	£0.00	£0.00	£0.00	£0.00	£0.00
17.22	Other Freight Lines	1	£0.00	£0.00	£0.00	£0.00	£0.00	£0.00
17.22	Other Freight Lines	2	£0.00	£0.00	£0.00	£0.00	£0.00	£0.25
17.23	Stourbridge Branch	1	£0.00	£0.00	£0.00	£0.00	£0.00	£0.00
17.23	Stourbridge Branch	2	£0.00	£0.00	£0.00	£0.00	£0.00	£0.00
18.01	Euston - Rugby	1	£0.35	£0.45	£0.95	£0.00	£0.45	£0.25
18.01	Euston - Rugby	2	£1.25	£0.65	£0.85	£0.00	£0.35	£0.25
18.02	Trent Valley	1	£0.25	£0.15	£0.35	£0.00	£0.00	£0.35
18.02	Trent Valley	2	£0.45	£0.25	£0.25	£0.00	£0.00	£0.35
18.03	Stafford - Crewe	1	£0.00	£0.15	£0.15	£0.00	£0.00	£0.00
18.03	Stafford - Crewe	2	£0.35	£0.15	£0.15	£0.00	£0.15	£0.15
18.04	Crewe - Preston	1	£0.25	£0.35	£0.35	£0.15	£0.25	£0.15
18.04	Crewe - Preston	2	£0.25	£0.35	£0.25	£0.00	£0.15	£0.00
18.05	Preston - Border (nr Gretna Jcn)	1	£0.00	£0.15	£0.15	£0.00	£0.15	£0.00

SRS_ID	SRS_NAME	WHICHWAY	TARIFFC	TARIFFD	TARIFFE	TARIFFN	TARIFFJ	TARIFFM
18.05	Preston - Border (nr Gretna Jcn)	2	£0.15	£0.15	£0.15	£0.00	£0.15	£0.00
18.06	Border (nr Gretna Jcn) - Carstairs	1	£0.00	£0.00	£0.00	£0.00	£0.00	£0.00
18.06	Border (nr Gretna Jcn) - Carstairs	2	£0.00	£0.00	£0.00	£0.00	£0.00	£0.00
18.07	Weaver Jcn - Allerton	1	£0.00	£0.00	£0.00	£0.00	£0.00	£0.00
18.07	Weaver Jcn - Allerton	2	£0.15	£0.15	£0.00	£0.00	£0.00	£0.00
18.08	Norton Bridge and Colwich Jcn - Cheadle Hume	1	£0.25	£0.45	£0.35	£0.00	£0.25	£0.15
18.08	Norton Bridge and Colwich Jcn - Cheadle Hume	2	£0.45	£0.35	£0.55	£0.00	£0.25	£0.00
18.09	Crewe - Kidsgrove	1	£0.00	£0.00	£0.00	£0.00	£0.00	£0.00
18.09	Crewe - Kidsgrove	2	£0.15	£0.00	£0.00	£0.00	£0.00	£0.00
18.10	Watford Junction - St Albans Abbey	1	£0.00	£0.00	£0.00	£0.00	£0.00	£0.00
18.10	Watford Junction - St Albans Abbey	2	£0.00	£0.00	£0.00	£0.00	£0.00	£0.00
18.11	Euston - Watford Junction (DC Lines)	1	£0.15	£0.25	£0.35	£0.00	£0.15	£0.15
18.11	Euston - Watford Junction (DC Lines)	2	£0.35	£0.25	£0.25	£0.00	£0.15	£0.15
18.12	Bletchley - Bedford	1	£0.00	£0.00	£0.00	£0.00	£0.00	£0.00
18.12	Bletchley - Bedford	2	£0.00	£0.00	£0.00	£0.00	£0.00	£0.00
18.13	Freight Lines	1	£0.00	£0.00	£0.00	£0.00	£0.00	£0.00
18.13	Freight Lines	2	£0.00	£0.00	£0.00	£0.00	£0.00	£0.00

SRS_ID	SRS_NAME	WHICHWAY	TARIFFC	TARIFFD	TARIFFE	TARIFFN	TARIFFJ	TARIFFM
19.01	St Pancras - Bedford	1	£0.75	£1.15	£3.98	£0.15	£1.15	£0.25
19.01	St Pancras - Bedford	2	£2.99	£0.65	£0.65	£0.00	£0.55	£0.15
19.02	Bedford - Nottingham	1	£0.15	£0.35	£0.45	£0.00	£0.35	£0.00
19.02	Bedford - Nottingham	2	£0.35	£0.35	£0.45	£0.00	£0.35	£0.15
19.03	Winchnor - Derby - Chesterfield	1	£0.15	£0.35	£0.25	£0.15	£0.25	£0.15
19.03	Winchnor - Derby - Chesterfield	2	£0.25	£0.25	£0.25	£0.00	£0.25	£0.15
19.04	Worksop / Chesterfield - Nottingham	1	£0.00	£0.00	£0.00	£0.00	£0.00	£0.00
19.04	Worksop / Chesterfield - Nottingham	2	£0.00	£0.00	£0.00	£0.00	£0.00	£0.00
19.05	Nottingham - Newark Crossing	1	£0.00	£0.00	£0.15	£0.00	£0.00	£0.00
19.05	Nottingham - Newark Crossing	2	£0.00	£0.00	£0.00	£0.00	£0.00	£0.00
19.06	Matlock Branch	1	£0.00	£0.00	£0.00	£0.00	£0.00	£0.00
19.06	Matlock Branch	2	£0.00	£0.00	£0.00	£0.00	£0.00	£0.00
19.07	Netherfield - Grantham	1	£0.00	£0.00	£0.00	£0.00	£0.00	£0.00
19.07	Netherfield - Grantham	2	£0.00	£0.00	£0.00	£0.00	£0.00	£0.00
19.08	Nuneaton - Wigston Jcns	1	£0.00	£0.00	£0.25	£0.00	£0.00	£0.00
19.08	Nuneaton - Wigston Jcns	2	£0.00	£0.00	£0.00	£0.00	£0.00	£0.00
19.09	Syston Jcns - Helpston Jcn	1	£0.00	£0.00	£0.00	£0.00	£0.00	£0.00

SRS_ID	SRS_NAME	WHICHWAY	TARIFFC	TARIFFD	TARIFFE	TARIFFN	TARIFFJ	TARIFFM
19.09	Syston Jcns - Helpston Jcn	2	£0.00	£0.00	£0.00	£0.00	£0.00	£0.00
19.10	North Stafford Jcn - Stoke-on-Trent	1	£0.00	£0.00	£0.00	£0.00	£0.00	£0.00
19.10	North Stafford Jcn - Stoke-on-Trent	2	£0.00	£0.00	£0.00	£0.00	£0.00	£0.00
19.11	Freight Through Branches	1	£0.00	£0.00	£0.15	£0.00	£0.00	£0.00
19.11	Freight Through Branches	2	£0.00	£0.00	£0.15	£0.00	£0.00	£0.00
19.12	Other Freight Lines	1	£0.00	£0.00	£0.00	£0.00	£0.00	£0.00
19.12	Other Freight Lines	2	£0.00	£0.00	£0.00	£0.00	£0.00	£0.00
20.01	Manchester Piccadilly - Crewe	1	£1.05	£1.25	£1.55	£0.25	£0.85	£0.35
20.01	Manchester Piccadilly - Crewe	2	£0.65	£0.55	£0.55	£0.15	£0.35	£0.15
20.02	Manchester Piccadilly - Deansgate	1	£2.58	£4.46	£6.15	£0.55	£4.12	£0.85
20.02	Manchester Piccadilly - Deansgate	2	£2.49	£4.75	£5.88	£0.55	£4.28	£1.35
20.03	Deansgate - Allerton	1	£0.55	£0.85	£1.15	£0.00	£0.65	£0.00
20.03	Deansgate - Allerton	2	£0.35	£0.55	£0.75	£0.00	£0.85	£0.00
20.04	Liverpool Lime Street - Allerton	1	£0.85	£1.05	£0.75	£0.00	£0.45	£0.25
20.04	Liverpool Lime Street - Allerton	2	£0.45	£0.95	£0.95	£0.00	£0.85	£0.15
20.05	NTP: Manchester Piccadilly - Guide Bridge	1	£0.75	£0.65	£1.25	£0.15	£0.55	£0.15
20.05	NTP: Manchester Piccadilly - Guide Bridge	2	£1.75	£1.85	£2.09	£0.15	£1.45	£0.15

SRS_ID	SRS_NAME	WHICHWAY	TARIFFC	TARIFFD	TARIFFE	TARIFFN	TARIFFJ	TARIFFM
20.06	NTP: Guide Bridge - Stalybridge	1	£0.45	£0.75	£1.05	£0.00	£0.75	£0.25
20.06	NTP: Guide Bridge - Stalybridge	2	£1.35	£2.32	£2.12	£0.25	£2.23	£0.45
20.07	Castlefield Jcn - Euxton Jcn	1	£0.35	£0.35	£0.65	£0.00	£0.35	£0.15
20.07	Castlefield Jcn - Euxton Jcn	2	£0.35	£0.45	£0.35	£0.00	£0.55	£0.15
20.08	Ashburys / Hyde Jnc - New Mills Central / Rose Hill	1	£0.00	£0.00	£0.00	£0.00	£0.00	£0.00
20.08	Ashburys / Hyde Jnc - New Mills Central / Rose Hill	2	£0.00	£0.00	£0.15	£0.00	£0.00	£0.00
20.09	Guide Bridge - Glossop / Hadfield	1	£0.15	£0.00	£0.25	£0.00	£0.00	£0.00
20.09	Guide Bridge - Glossop / Hadfield	2	£0.25	£0.15	£0.45	£0.00	£0.15	£0.00
20.10	Guide Bridge - Stockport - Mouldsworth	1	£0.15	£0.00	£0.00	£0.00	£0.00	£0.00
20.10	Guide Bridge - Stockport - Mouldsworth	2	£0.00	£0.15	£0.25	£0.00	£0.00	£0.00
20.11	Slade Lane Jcn - Manchester Airport - Wilmslow	1	£0.15	£0.25	£0.25	£0.00	£0.15	£0.00
20.11	Slade Lane Jcn - Manchester Airport - Wilmslow	2	£0.25	£0.25	£0.25	£0.00	£0.25	£0.00
20.12	Blackpool North and South Branches	1	£0.00	£0.00	£0.00	£0.00	£0.00	£0.00
20.12	Blackpool North and South Branches	2	£0.00	£0.00	£0.00	£0.00	£0.00	£0.00
20.13	Victoria - Edge Hill plus Springs Bank - Broad Green plus Earlstown	1	£0.00	£0.15	£0.00	£0.00	£0.00	£0.00
20.13	Victoria - Edge Hill plus Springs Bank - Broad Green plus Earlstown	2	£0.15	£0.15	£0.15	£0.00	£0.00	£0.00

SRS_ID	SRS_NAME	WHICHWAY	TARIFFC	TARIFFD	TARIFFE	TARIFFN	TARIFFJ	TARIFFM
20.14	Southport / Kirkby - Wigan Wallgate	1	£0.00	£0.00	£0.00	£0.00	£0.00	£0.00
20.14	Southport / Kirkby - Wigan Wallgate	2	£0.00	£0.00	£0.00	£0.00	£0.00	£0.00
20.15	Wigan Wallgate - Manchester Victoria	1	£0.00	£0.15	£0.35	£0.00	£0.15	£0.00
20.15	Wigan Wallgate - Manchester Victoria	2	£0.25	£0.15	£0.15	£0.00	£0.15	£0.00
20.16	Manchester Victoria - Rochdale / Stalybridge	1	£0.15	£0.15	£0.15	£0.00	£0.15	£0.00
20.16	Manchester Victoria - Rochdale / Stalybridge	2	£0.00	£0.15	£0.15	£0.00	£0.00	£0.00
20.17	Buxton Branch	1	£0.65	£0.55	£0.55	£0.15	£0.45	£0.15
20.17	Buxton Branch	2	£1.15	£0.95	£1.45	£0.25	£0.75	£0.45
20.18	Bolton - Blackburn	1	£0.45	£0.00	£0.35	£0.00	£0.15	£0.00
20.18	Bolton - Blackburn	2	£0.45	£0.00	£0.35	£0.00	£0.15	£0.00
20.19	Oldham Loop	1	£0.00	£0.00	£0.00	£0.00	£0.00	£0.00
20.19	Oldham Loop	2	£0.00	£0.00	£0.00	£0.00	£0.00	£0.00
20.20	Freight Lines	1	£0.25	£0.35	£0.25	£0.00	£0.15	£0.00
20.20	Freight Lines	2	£0.35	£0.35	£0.35	£0.00	£0.25	£0.15
20.21	Hazel Grove - Edgeley Jcn	1	£0.00	£0.00	£0.00	£0.00	£0.00	£0.00
20.21	Hazel Grove - Edgeley Jcn	2	£0.00	£0.00	£0.00	£0.00	£0.00	£0.00
21.01	Merseyrail	1	£0.00	£0.00	£0.00	£0.00	£0.00	£0.00

SRS_ID	SRS_NAME	WHICHWAY	TARIFFC	TARIFFD	TARIFFE	TARIFFN	TARIFFJ	TARIFFM
21.01	Merseyrail		2	£0.00	£0.00	£0.15	£0.00	£0.00
22.01	Crewe / Chester Lines		1	£0.00	£0.00	£0.00	£0.00	£0.00
22.01	Crewe / Chester Lines		2	£0.00	£0.00	£0.00	£0.00	£0.00
22.02	Border (nr Chester) - Holyhead		1	£0.00	£0.00	£0.00	£0.00	£0.00
22.02	Border (nr Chester) - Holyhead		2	£0.00	£0.00	£0.00	£0.00	£0.00
22.03	Llandudno - Blaenau Ffestiniog		1	£0.00	£0.00	£0.00	£0.00	£0.00
22.03	Llandudno - Blaenau Ffestiniog		2	£0.00	£0.00	£0.00	£0.00	£0.00
22.04	Bidstone Dee Jcn - Dee Marsh		1	£0.00	£0.00	£0.00	£0.00	£0.00
22.04	Bidstone Dee Jcn - Dee Marsh		2	£0.00	£0.00	£0.00	£0.00	£0.00
22.05	Wrexham Central - Border (nr Hawarden Bridge)		1	£0.00	£0.00	£0.00	£0.00	£0.00
22.05	Wrexham Central - Border (nr Hawarden Bridge)		2	£0.00	£0.00	£0.00	£0.00	£0.00
23.01	Cumbrian Coast		1	£0.00	£0.00	£0.00	£0.00	£0.00
23.01	Cumbrian Coast		2	£0.00	£0.00	£0.00	£0.00	£0.00
23.02	Settle and Carlisle		1	£0.00	£0.00	£0.00	£0.00	£0.00
23.02	Settle and Carlisle		2	£0.00	£0.00	£0.00	£0.00	£0.00
23.03	Windermere Branch		1	£0.00	£0.15	£0.00	£0.00	£0.00
23.03	Windermere Branch		2	£0.00	£0.15	£0.00	£0.00	£0.00

SRS_ID	SRS_NAME	WHICHWAY	TARIFFC	TARIFFD	TARIFFE	TARIFFN	TARIFFJ	TARIFFM
23.04	Long Preston - Carnforth	1	£0.00	£0.00	£0.00	£0.00	£0.00	£0.00
23.04	Long Preston - Carnforth	2	£0.00	£0.00	£0.00	£0.00	£0.00	£0.00
23.05	Morecambe / Heysham Port Branch	1	£0.00	£0.00	£0.00	£0.00	£0.00	£0.00
23.05	Morecambe / Heysham Port Branch	2	£0.00	£0.00	£0.00	£0.00	£0.00	£0.00
23.06	Roses Line and Branches	1	£0.00	£0.00	£0.00	£0.00	£0.00	£0.00
23.06	Roses Line and Branches	2	£0.00	£0.00	£0.00	£0.00	£0.00	£0.00
23.07	Freight Lines	1	£0.00	£0.00	£0.00	£0.00	£0.00	£0.00
23.07	Freight Lines	2	£0.00	£0.00	£0.00	£0.00	£0.00	£0.00
24.01	Glasgow QS - Edinburgh Waverley	1	£1.65	£1.95	£1.55	£0.15	£1.85	£0.45
24.01	Glasgow QS - Edinburgh Waverley	2	£0.85	£0.95	£1.15	£0.15	£0.95	£0.15
24.02	Carstairs - Haymarket East Jn	1	£0.95	£0.55	£0.65	£0.00	£0.55	£0.15
24.02	Carstairs - Haymarket East Jn	2	£0.45	£0.55	£1.25	£0.00	£0.55	£0.15
24.03	Bathgate - Branch	1	£0.35	£0.55	£0.55	£0.00	£0.55	£0.00
24.03	Bathgate - Branch	2	£0.35	£0.55	£0.55	£0.00	£0.55	£0.00
24.04	Dunblane / Alloa - Polmont Jcn / Greenhill Upper Jcn	1	£0.35	£0.35	£0.45	£0.00	£0.25	£0.00
24.04	Dunblane / Alloa - Polmont Jcn / Greenhill Upper Jcn	2	£0.35	£0.35	£0.65	£0.00	£0.45	£0.00
24.05	Newcraighall - Portobello Jcn	1	£0.25	£0.15	£0.25	£0.00	£0.25	£0.00

SRS_ID	SRS_NAME	WHICHWAY	TARIFFC	TARIFFD	TARIFFE	TARIFFN	TARIFFJ	TARIFFM
24.05	Newcraighall - Portobello Jcn	2	£0.15	£0.15	£0.25	£0.00	£0.15	£0.00
24.06	Fife Loop	1	£0.95	£1.15	£0.55	£0.00	£1.05	£0.15
24.06	Fife Loop	2	£0.25	£0.35	£0.45	£0.00	£0.45	£0.00
24.07	Dundee - Dunblane	1	£0.00	£0.00	£0.15	£0.00	£0.00	£0.00
24.07	Dundee - Dunblane	2	£0.00	£0.00	£0.00	£0.00	£0.00	£0.00
24.08	Dundee / Hilton Jcn - Markinch	1	£0.15	£0.15	£0.15	£0.15	£0.00	£0.15
24.08	Dundee / Hilton Jcn - Markinch	2	£0.25	£0.00	£0.00	£0.00	£0.00	£0.00
24.09	Dundee - Aberdeen	1	£0.25	£0.35	£0.25	£0.00	£0.25	£0.00
24.09	Dundee - Aberdeen	2	£0.15	£0.15	£0.00	£0.00	£0.15	£0.00
24.10	Edinburgh Suburban Lines	1	£0.00	£0.00	£0.15	£0.00	£0.00	£0.00
24.10	Edinburgh Suburban Lines	2	£0.25	£0.15	£0.15	£0.00	£0.15	£0.00
24.11	Other freight	1	£0.25	£0.00	£0.00	£0.00	£0.15	£0.00
24.11	Other freight	2	£0.00	£0.00	£0.00	£0.00	£0.00	£0.00
25.01	Far North plus Kyle Line	1	£0.00	£0.00	£0.00	£0.00	£0.00	£0.00
25.01	Far North plus Kyle Line	2	£0.00	£0.00	£0.00	£0.00	£0.00	£0.00
25.02	West Highland Line	1	£0.00	£0.00	£0.00	£0.00	£0.00	£0.00
25.02	West Highland Line	2	£0.00	£0.00	£0.00	£0.00	£0.00	£0.00

SRS_ID	SRS_NAME	WHICHWAY	TARIFFC	TARIFFD	TARIFFE	TARIFFN	TARIFFJ	TARIFFM
25.03	Perth - Inverness	1	£0.15	£0.15	£0.45	£0.00	£0.00	£0.00
25.03	Perth - Inverness	2	£0.15	£0.15	£0.15	£0.00	£0.00	£0.15
25.04	Aberdeen - Inverness	1	£0.00	£0.00	£0.00	£0.00	£0.00	£0.00
25.04	Aberdeen - Inverness	2	£0.00	£0.00	£0.00	£0.00	£0.00	£0.00
25.05	Freight Lines	1	£0.00	£0.00	£0.00	£0.00	£0.00	£0.00
25.05	Freight Lines	2	£0.00	£0.00	£0.00	£0.00	£0.00	£0.00
26.01	WCML: Glasgow Central - Carstairs	1	£0.65	£0.25	£0.35	£0.00	£0.25	£0.15
26.01	WCML: Glasgow Central - Carstairs	2	£0.45	£0.55	£0.75	£0.15	£0.55	£0.25
26.02	Midcalder Jcn - Holytown Jcn	1	£0.15	£0.00	£0.00	£0.00	£0.15	£0.00
26.02	Midcalder Jcn - Holytown Jcn	2	£0.00	£0.00	£0.00	£0.00	£0.00	£0.00
26.03	Ayr lines, Wemyss Bay and Gourock	1	£0.15	£0.00	£0.35	£0.00	£0.00	£0.00
26.03	Ayr lines, Wemyss Bay and Gourock	2	£0.75	£0.15	£0.15	£0.00	£0.15	£0.00
26.04	Glasgow North electric routes	1	£0.25	£0.25	£0.35	£0.00	£0.25	£0.00
26.04	Glasgow North electric routes	2	£0.25	£0.25	£0.25	£0.00	£0.15	£0.00
26.05	Stranraer - Ayr	1	£0.00	£0.00	£0.00	£0.00	£0.00	£0.00
26.05	Stranraer - Ayr	2	£0.00	£0.00	£0.00	£0.00	£0.00	£0.00
26.06	Paisley Canal Branch	1	£0.00	£0.15	£0.00	£0.00	£0.15	£0.00

SRS_ID	SRS_NAME	WHICHWAY	TARIFFC	TARIFFD	TARIFFE	TARIFFN	TARIFFJ	TARIFFM
26.06	Paisley Canal Branch	2	£0.00	£0.15	£0.00	£0.00	£0.15	£0.00
26.07	Muirhouse Jcn - East Kilbride / Kilmarnock	1	£0.15	£0.25	£0.25	£0.00	£0.15	£0.00
26.07	Muirhouse Jcn - East Kilbride / Kilmarnock	2	£0.45	£0.45	£0.75	£0.00	£0.35	£0.15
26.08	Gretna Jcn - Kilmarnock - Barassie Jcn	1	£0.00	£0.00	£0.00	£0.00	£0.00	£0.00
26.08	Gretna Jcn - Kilmarnock - Barassie Jcn	2	£0.00	£0.00	£0.00	£0.00	£0.00	£0.00
26.09	Eglington Street Jcn - Neilston / Newton including Cathcart Circle	1	£0.55	£0.25	£0.45	£0.00	£0.15	£0.00
26.09	Eglington Street Jcn - Neilston / Newton including Cathcart Circle	2	£0.95	£0.35	£0.65	£0.00	£0.25	£0.15
26.10	Newton - Gartsherrie South / Rutherglen Jcn	1	£0.15	£0.15	£0.25	£0.00	£0.15	£0.00
26.10	Newton - Gartsherrie South / Rutherglen Jcn	2	£0.15	£0.15	£0.25	£0.00	£0.15	£0.00
26.11	Lanark Branch	1	£0.15	£0.15	£0.15	£0.00	£0.15	£0.00
26.11	Lanark Branch	2	£0.15	£0.15	£0.15	£0.00	£0.15	£0.00
26.12	Knightswood North Jcn - Cowlairs Jcn plus Cowlairs Jcn - Carmuir Jcns	1	£0.00	£0.00	£0.00	£0.00	£0.00	£0.00
26.12	Knightswood North Jcn - Cowlairs Jcn plus Cowlairs Jcn - Carmuir Jcns	2	£0.00	£0.00	£0.00	£0.00	£0.00	£0.00
26.13	Freight Lines	1	£0.00	£0.15	£0.00	£0.00	£0.00	£0.00
26.13	Freight Lines	2	£0.00	£0.00	£0.00	£0.00	£0.00	£0.00
99.98	East Putney - Wimbledon (District Line)	1	£4.32	£0.65	£0.75	£0.15	£0.85	£0.25

SRS_ID	SRS_NAME	WHICHWAY	TARIFFC	TARIFFD	TARIFFE	TARIFFN	TARIFFJ	TARIFFM	
99.98	East Putney - Wimbledon (District Line)		2	£0.35	£0.15	£0.45	£0.00	£0.00	£0.00
99.99	CTRL		1	£0.00	£0.00	£0.00	£0.00	£0.00	£0.00

Appendix 4 EC4T Forecast Tariffs

2009/10 Median Traction Electricity Tariffs in 2006/7 prices (Current Chargeable ESTAs)									
Rates in p/kWh ESTA	Winter Weekday			Winter Weekend		Summer Weekday		Summer Weekend	
	Day	Peak	Night	Day	Night	Day	Night	Day	Night
	07:30	16:00	19:00	07:30	19:00	07:30	19:00	07:30	19:00
M Merseyside	6.754	13.890	5.289	6.546	4.654	4.542	3.545	4.199	3.333
N Midland Main Line	6.561	13.396	5.097	6.353	4.461	4.349	3.352	4.006	3.140
O LTS	7.091	16.148	5.627	6.884	4.991	4.879	3.882	4.536	3.670
P Great Eastern	6.810	15.179	5.346	6.603	4.711	4.598	3.601	4.256	3.389
Q West Anglia	6.678	13.920	5.214	6.470	4.578	4.466	3.469	4.123	3.257
R East Coast Main Line	6.861	14.190	5.396	6.653	4.761	4.649	3.652	4.306	3.439
S Scotland	6.683	10.392	5.219	6.476	4.584	4.471	3.474	4.129	3.262
T West Coast Main Line	6.905	14.740	5.439	6.698	4.804	4.694	3.694	4.351	3.482
U Southern	6.756	15.355	5.275	6.548	4.640	4.544	3.530	4.201	3.318

2009/10 Median Traction Electricity Tariffs in 2006/7 prices (Proposed Chargeable ESTAs)									
Rates in p/kWh ESTA	Winter Weekday			Winter Weekend		Summer Weekday		Summer Weekend	
	Day	Peak	Night	Day	Night	Day	Night	Day	Night
	07:30	16:00	19:00	07:30	19:00	07:30	19:00	07:30	19:00
M Merseyside	6.754	13.890	5.289	6.546	4.654	4.542	3.545	4.199	3.333
N Midland Main Line	6.561	13.396	5.097	6.353	4.461	4.349	3.352	4.006	3.140
O LTS	7.091	16.148	5.627	6.884	4.991	4.879	3.882	4.536	3.670
P Great Eastern	6.810	15.179	5.346	6.603	4.711	4.598	3.601	4.256	3.389
Q West Anglia	6.678	13.920	5.214	6.470	4.578	4.466	3.469	4.123	3.257
A ECML Central	6.994	13.991	5.530	6.787	4.895	4.782	3.785	4.439	3.573
B ECML North	6.726	12.592	5.262	6.519	4.627	4.514	3.517	4.172	3.305
C ECML Leeds	6.809	13.714	5.345	6.602	4.710	4.598	3.600	4.255	3.388
R ECML South	6.863	14.712	5.399	6.656	4.764	4.651	3.654	4.309	3.442
D Scotland East	6.860	11.337	5.395	6.652	4.760	4.648	3.651	4.305	3.439
E Scotland North & West	6.705	10.002	5.241	6.498	4.606	4.493	3.496	4.151	3.284
F Scotland WCML	6.884	10.640	5.420	6.677	4.785	4.673	3.675	4.330	3.463
S Scotland Glasgow	6.491	10.592	5.027	6.284	4.392	4.279	3.282	3.937	3.070
G WCML Central	6.923	14.316	5.458	6.715	4.822	4.711	3.713	4.368	3.501
H WCML West Midlands	6.884	14.917	5.414	6.677	4.779	4.673	3.669	4.330	3.457
I WCML Manchester	6.827	12.886	5.355	6.619	4.720	4.615	3.610	4.272	3.398

J	WCML North	7.227	13.049	5.763	7.020	5.128	5.015	4.018	4.673	3.806
T	WCML South	6.853	15.514	5.389	6.646	4.754	4.641	3.644	4.299	3.432
K	Southern Kent	6.960	15.040	5.496	6.753	4.861	4.748	3.751	4.406	3.539
L	Southern Sussex	6.879	14.282	5.415	6.671	4.779	4.667	3.670	4.324	3.458
U	Southern Suburban	6.576	16.718	5.111	6.368	4.476	4.364	3.366	4.021	3.154
Y	Southern Wessex	6.699	14.443	5.162	6.491	4.526	4.487	3.417	4.144	3.205

2009/10 High Traction Electricity Tariffs in 2006/7 prices (Current Chargeable ESTAs)									
Rates in p/kWh ESTA	Winter Weekday			Winter Weekend		Summer Weekday		Summer Weekend	
	Day	Peak	Night	Day	Night	Day	Night	Day	Night
	07:30	16:00	19:00	07:30	19:00	07:30	19:00	07:30	19:00
M Merseyside	7.206	14.820	5.643	6.984	4.966	4.846	3.782	4.481	3.556
N Midland Main Line	7.001	14.293	5.438	6.778	4.760	4.641	3.577	4.274	3.350
O LTS	7.565	17.229	6.003	7.344	5.326	5.205	4.141	4.840	3.916
P Great Eastern	7.267	16.196	5.704	7.045	5.026	4.906	3.843	4.541	3.616
Q West Anglia	7.125	14.852	5.563	6.904	4.885	4.765	3.701	4.399	3.475
R East Coast Main Line	7.320	15.140	5.757	7.098	5.080	4.960	3.896	4.594	3.670
S Scotland	7.131	11.087	5.568	6.909	4.891	4.771	3.706	4.405	3.481
T West Coast Main Line	7.368	15.727	5.803	7.147	5.126	5.008	3.942	4.642	3.716
U Southern	7.208	16.383	5.628	6.987	4.950	4.848	3.767	4.482	3.540

2009/10 High Traction Electricity Tariffs in 2006/7 prices (Proposed Chargeable ESTAs)									
Rates in p/kWh ESTA	Winter Weekday			Winter Weekend		Summer Weekday		Summer Weekend	
	Day	Peak	Night	Day	Night	Day	Night	Day	Night
	07:30	16:00	19:00	07:30	19:00	07:30	19:00	07:30	19:00
M Merseyside	7.206	14.820	5.643	6.984	4.966	4.846	3.782	4.481	3.556
N Midland Main Line	7.001	14.293	5.438	6.778	4.760	4.641	3.577	4.274	3.350
O LTS	7.565	17.229	6.003	7.344	5.326	5.205	4.141	4.840	3.916
P Great Eastern	7.267	16.196	5.704	7.045	5.026	4.906	3.843	4.541	3.616
Q West Anglia	7.125	14.852	5.563	6.904	4.885	4.765	3.701	4.399	3.475
A ECML Central	7.462	14.928	5.900	7.241	5.223	5.102	4.038	4.736	3.812
B ECML North	7.177	13.434	5.614	6.955	4.937	4.817	3.753	4.451	3.526
C ECML Leeds	7.266	14.633	5.704	7.044	5.025	4.906	3.842	4.540	3.615
R ECML South	7.323	15.697	5.760	7.102	5.083	4.963	3.899	4.598	3.673
D Scotland East	7.319	12.095	5.757	7.097	5.079	4.959	3.895	4.593	3.669
E Scotland North & West	7.154	10.672	5.592	6.933	4.914	4.794	3.730	4.428	3.504
F Scotland WCML	7.345	11.352	5.783	7.124	5.105	4.985	3.921	4.619	3.695
S Scotland Glasgow	6.926	11.301	5.364	6.704	4.686	4.566	3.502	4.200	3.276
G WCML Central	7.386	15.275	5.823	7.165	5.145	5.026	3.961	4.661	3.735
H WCML West Midlands	7.345	15.916	5.777	7.124	5.098	4.985	3.915	4.619	3.688
I WCML Manchester	7.284	13.749	5.714	7.063	5.036	4.924	3.852	4.558	3.626

2009/10 High Traction Electricity Tariffs in 2006/7 prices (Proposed Chargeable ESTAs)									
Rates in p/kWh ESTA	Winter Weekday			Winter Weekend		Summer Weekday		Summer Weekend	
	Day	Peak	Night	Day	Night	Day	Night	Day	Night
	07:30	16:00	19:00	07:30	19:00	07:30	19:00	07:30	19:00
J WCML North	7.711	13.922	6.149	7.490	5.471	5.351	4.287	4.985	4.061
T WCML South	7.312	16.552	5.750	7.091	5.072	4.952	3.888	4.587	3.662
K Southern Kent	7.426	16.048	5.864	7.205	5.186	5.066	4.003	4.701	3.776
L Southern Sussex	7.340	15.238	5.778	7.118	5.099	4.980	3.916	4.614	3.689
U Southern Suburban	7.016	17.836	5.453	6.794	4.776	4.656	3.592	4.290	3.365
Y Southern Wessex	7.148	15.410	5.507	6.926	4.830	4.788	3.645	4.422	3.419

2009/10 Low Traction Electricity Tariffs in 2006/7 Prices

2009/10 Low Traction Electricity Tariffs in 2006/7 Prices (Current Chargeable ESTAs)										
Rates in p/kWh	ESTA	Winter Weekday			Winter Weekend		Summer Weekday		Summer Weekend	
		Day	Peak	Night	Day	Night	Day	Night	Day	Night
		07:30	16:00	19:00	07:30	19:00	07:30	19:00	07:30	19:00
M	Merseyside	6.534	13.439	5.118	6.333	4.503	4.395	3.429	4.063	3.225
N	Midland Main Line	6.348	12.961	4.931	6.147	4.316	4.207	3.243	3.876	3.037
O	LTS	6.861	15.623	5.444	6.660	4.830	4.721	3.756	4.389	3.551
P	Great Eastern	6.589	14.687	5.172	6.388	4.558	4.449	3.484	4.118	3.280
Q	West Anglia	6.461	13.467	5.045	6.260	4.429	4.321	3.356	3.989	3.151
R	East Coast Main Line	6.638	13.730	5.221	6.437	4.607	4.498	3.533	4.166	3.328
S	Scotland	6.467	10.054	5.050	6.266	4.435	4.326	3.362	3.994	3.156
T	West Coast Main Line	6.682	14.261	5.263	6.480	4.648	4.541	3.575	4.209	3.369
U	Southern	6.536	14.856	5.104	6.335	4.489	4.396	3.416	4.065	3.210

2009/10 Low Traction Electricity Tariffs in 2006/7 Prices (Proposed Chargeable ESTAs)										
Rates in p/kWh		Winter Weekday			Winter Weekend		Summer Weekday		Summer Weekend	
ESTA		Day 07:30	Peak 16:00	Night 19:00	Day 07:30	Night 19:00	Day 07:30	Night 19:00	Day 07:30	Night 19:00
M	Merseyside	6.534	13.439	5.118	6.333	4.503	4.395	3.429	4.063	3.225
N	Midland Main Line	6.348	12.961	4.931	6.147	4.316	4.207	3.243	3.876	3.037
O	LTS	6.861	15.623	5.444	6.660	4.830	4.721	3.756	4.389	3.551
P	Great Eastern	6.589	14.687	5.172	6.388	4.558	4.449	3.484	4.118	3.280
Q	West Anglia	6.461	13.467	5.045	6.260	4.429	4.321	3.356	3.989	3.151
A	ECML Central	6.767	13.537	5.350	6.566	4.736	4.627	3.662	4.295	3.457
B	ECML North	6.508	12.183	5.091	6.307	4.477	4.368	3.403	4.036	3.198
C	ECML Leeds	6.588	13.269	5.172	6.387	4.557	4.449	3.483	4.117	3.279
R	ECML South	6.640	14.234	5.224	6.439	4.609	4.501	3.535	4.169	3.331
D	Scotland East	6.637	10.968	5.220	6.437	4.606	4.497	3.532	4.165	3.327
E	Scotland North & West	6.488	9.678	5.071	6.287	4.456	4.347	3.383	4.016	3.177
F	Scotland WCML	6.661	10.295	5.244	6.460	4.630	4.521	3.556	4.189	3.351
S	Scotland Glasgow	6.280	10.248	4.864	6.080	4.249	4.141	3.175	3.809	2.971
G	WCML Central	6.698	13.851	5.280	6.497	4.666	4.558	3.592	4.226	3.387

2009/10 Low Traction Electricity Tariffs in 2006/7 Prices (Proposed Chargeable ESTAs)

Rates in p/kWh		Winter Weekday			Winter Weekend		Summer Weekday		Summer Weekend	
		Day	Peak	Night	Day	Night	Day	Night	Day	Night
ESTA		07:30	16:00	19:00	07:30	19:00	07:30	19:00	07:30	19:00
H	WCML West Midlands	6.661	14.432	5.238	6.460	4.623	4.521	3.550	4.189	3.344
I	WCML Manchester	6.605	12.467	5.182	6.405	4.566	4.465	3.493	4.133	3.288
J	WCML North	6.992	12.625	5.576	6.792	4.961	4.853	3.887	4.521	3.683
T	WCML South	6.630	15.010	5.214	6.430	4.599	4.491	3.526	4.159	3.321
K	Southern Kent	6.735	14.552	5.318	6.533	4.703	4.594	3.630	4.262	3.424
L	Southern Sussex	6.656	13.817	5.239	6.455	4.624	4.515	3.551	4.183	3.345
U	Southern Suburban	6.362	16.175	4.945	6.161	4.331	4.222	3.257	3.890	3.052
Y	Southern Wessex	6.481	13.975	4.994	6.280	4.379	4.342	3.306	4.010	3.100